



## ***Spotlighting Industry Growth***



# **District Energy Space '10**

*Nearly 147 million  
square feet reported*

# District Energy Space '10

*Dedicated to the growth and utilization of district energy as a means to enhance energy efficiency, provide more sustainable and reliable energy infrastructure, and contribute to improving the global environment.*

## Industry Growth Around the World

The publication of *District Energy Space* has become an annual tradition for the International District Energy Association since 1990. The 2011 issue features a compilation of data provided by our members including the number of buildings and their area in square feet that have been committed or recommitted to district energy service in North America and beyond North America during the calendar year 2010.

Established in 1909, the International District Energy Association (IDEA) serves as a vital communications and information hub for the district energy industry, connecting industry professionals and advancing the technology around the world. With headquarters just outside of Boston, Mass., IDEA comprises over 1,400 district heating and cooling system executives, managers, engineers, consultants and equipment suppliers from 25 countries. IDEA supports the growth and utilization of district energy as a means to conserve fuel, increase energy efficiency and reduce emissions to improve the global environment.

Each year, IDEA asks all of its member systems to provide information on buildings that committed or recommitted to district energy service during the previous calendar year. For

each building, *District Energy Space* provides the following information:

- Building name and type
- Service provider's name and location
- Building area in square feet (where available)
- Services provided (heating, domestic hot water, laundry, cooling, ice-making, pool warming, etc.)

*District Energy Space* not only enables IDEA to record the year-to-year growth experienced by its member systems, but also can be a valuable marketing asset for your organization. All systems submitting entries will receive an **IDEA Certificate of Participation**. During the IDEA 102nd Annual Conference in Toronto, Ontario, Canada June 26–29, 2011, IDEA will congratulate and present awards to those systems submitting the greatest amount of total square footage and the greatest number of total buildings for 2010 for both North America and Beyond North America.

*District Energy Space* 2010 and previous issues are available in PDF format by downloading from IDEA's Web site, <http://www.districtenergy.org/district-energy-space>.

## Summary for 2010

District Energy system growth has been good, despite the challenging global economy. Our members reported that 121 customer buildings in North America totaling 23,333,939 sq ft of building space were committed or recommitted to district energy service during 2010, or were previously unreported. That compares with 95 buildings and 27,440,426 square feet during 2009.

The North American total of 23,333,939 sq ft added to IDEA's running total of square footage of 495,127,348 sq ft committed to North American district energy systems since 1990, brings the current total for North America reported since 1990 to 518,461,287 sq ft.

IDEA is also pleased to be able to report strong system growth from Beyond North America. An additional 123,850,583 sq ft

and 1,009 buildings were reported for 2010. That compares with 102 buildings and 41,113,744 sq ft during 2009. Details are described later in this publication.

## Stand Up and Be Recognized for 2011

Make plans now to photograph and enter your customer buildings that commit or recommit for your district energy service during 2011! The deadline for submittal of buildings for 2011 is **Fri., April 13, 2012**.

Continuing our tradition, during the IDEA 103rd Annual Conference in Chicago, Illinois June 30–July 3, 2012, IDEA will congratulate and present awards to those systems submitting the greatest amount of total square footage and the greatest number of total buildings for 2011 for both North America and Beyond North America. We look forward to hearing from you!

### 2010 Square Footage Reported\*

Category	North America	Beyond North America
Commercial-Mixed Use	1,051,400	79,913,030
Commercial-Office	4,679,599	2,751,637
Commercial-Retail/Manufacturing	886,000	1,106,186
Entertainment, Cultural or Sporting Center	138,000	746,738
Government	3,989,777	0
Hotel	2,040,944	19,806,820
Residential	2,106,740	18,776,539
School, Hospital or Institution	7,925,679	749,633
Other	515,800	0
<b>Square Footage Reported 2010</b>	<b>23,333,939</b>	<b>123,850,583</b>

**2010 Total Reported in North America and Beyond North America** **147,184,522**

\* All entries are newly signed, connected or renewed customers during calendar year 2010, (Renewal = renewed/recommitted to a long-term service agreement of 10 years or greater.)



### Commercial – Mixed Use

- **14 West Restaurant**  
Indianapolis, IN  
Citizens Thermal  
18,000 sq ft—space heating,  
space cooling
- **Office Building**  
Boston, MA  
Veolia Energy Boston  
50,000 sq ft—space heating
- **Restaurant**  
Boston, MA  
Veolia Energy Boston  
5,400 sq ft—domestic hot water,  
process
- **Office Building**  
Boston, MA  
Veolia Energy Boston  
145,000 sq ft—space heating
- **Convention Center**  
Boston, MA  
Veolia Energy Boston  
193,000 sq ft—space heating,  
domestic hot water
- **Office Building (LEED-CS Gold)**  
Boston, MA  
Veolia Energy Boston  
640,000 sq ft—space heating

### Commercial – Office

- **Austin Area**  
Austin Energy  
Austin, TX  
138,015 sq ft—space cooling
- **NCAA Headquarters Expansion**  
Indianapolis, IN  
Citizens Thermal  
130,000 sq ft—space heating,  
space cooling, domestic hot water,  
humidification
- **Indianapolis Newspaper Building**  
Indianapolis, IN  
Citizens Thermal  
150,000 sq ft—space heating,  
space cooling

- **Perennial Washington Street**  
Indianapolis, IN  
Citizens Thermal  
140,000 sq ft—space heating,  
space cooling

- **Hippodrome**  
New York, NY  
Con Edison Steam Operations  
615,000 sq ft—space heating,  
domestic hot water, other

- **Macklowe**  
New York, NY  
Con Edison Steam Operations  
437,500 sq ft—space heating,  
domestic hot water

- **Blue Cross Blue Shield of Michigan**  
Detroit, MI  
Detroit Thermal  
780,000 sq ft—space heating,  
domestic hot water

- **81 on 7th**  
St. Paul, MN  
District Energy St. Paul  
67,500 sq ft—space heating



*Hippodrome*



*81 on 7th*

- **Office Building**  
Boston, MA  
Veolia Energy Boston  
1,700,000 sq ft—space heating,  
domestic hot water

- **Office Building**  
Tulsa, OK  
Veolia Energy Tulsa  
521,584 sq ft—space heating,  
space cooling, domestic hot water

### Commercial – Retail/Manufacturing

- **Circle Centre Mall**  
Citizens Thermal  
Indianapolis, IN  
786,000 sq ft—space cooling
- **High-End Department Store**  
Veolia Energy Boston  
Boston MA  
100,000 sq ft—space heating



*Circle Centre Mall*



*Blue Cross Blue Shield of Michigan*

## Entertainment, Cultural or Sporting Center

### ■ Institute for Media and Entertainment

Con Edison Steam Operations  
New York, NY  
22,000 sq ft—space heating,  
domestic hot water, other

### ■ Theater

Veolia Energy Boston  
Boston, MA  
23,000 sq ft—space heating

### ■ Museum

Veolia Energy Philadelphia  
Philadelphia, PA  
93,000 sq ft—space heating,  
domestic hot water, humidification



*GSA McNamara Federal Building*



*Ramsey County Courthouse & City Hall  
(credit: Wold Architects & Engineers)*



*GSA Levin Courthouse*



*Griffin Building (credit: Wold Architects & Engineers)*

## Government

### ■ GSA Levin Courthouse

Detroit, MI  
Detroit Thermal  
800,000 square feet—space heating,  
domestic hot water

### ■ GSA McNamara Federal Building

Detroit, MI  
Detroit Thermal  
1,100,000 square feet—space  
heating, domestic hot water

### ■ Griffin Building

St. Paul, MN  
District Energy St. Paul  
120,000 sq ft—space heating,  
space cooling

### ■ Metro Square Building

St. Paul, MN  
District Energy St. Paul  
335,123 sq ft—space cooling

### ■ Ramsey County Courthouse & City Hall

St. Paul, MN  
District Energy St. Paul  
361,000 sq ft—space heating,  
space cooling



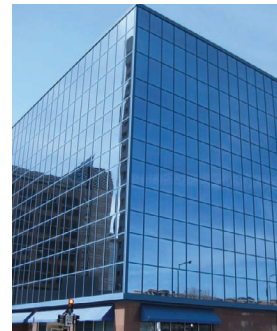
*Ramsey County Juvenile Justice (credit: Wold Architects & Engineers)*

### ■ Ramsey County Juvenile Justice Center

St. Paul, MN  
District Energy St. Paul  
157,300 sq ft—space heating,  
space cooling

### ■ Ramsey County Law Enforcement Center

St. Paul, MN  
District Energy St. Paul  
325,000 sq ft—space heating,  
space cooling



*Metro Square Building*



*Ramsey County Law Enforcement Center*



### Government - cont.

#### ■ Post Office

Phoenix, AZ  
NRG Phoenix  
96,354 sq ft—space cooling

#### ■ Maricopa County Court Tower

Phoenix, AZ  
NRG Phoenix  
695,000 sq ft—space cooling



*Post Office (credit: Larry Russell)*



*Maricopa County Court Tower (credit: Larry Russell)*

### Hotel

#### ■ Canterbury Hotel

Indianapolis, IN  
Citizens Thermal  
32,000 sq ft—space heating,  
space cooling

#### ■ Carnegie House

New York City, NY  
Con Edison Steam Operations  
418,114 sq ft—space heating,  
domestic hot water, other

#### ■ 351-9 West 16th Street

New York City, NY  
Con Edison Steam Operations  
222,136 sq ft—space heating,  
domestic hot water

#### ■ Club Quarters Hotel

New York City, NY  
Con Edison Steam Operations  
50,000 sq ft—space heating,  
domestic hot water

#### ■ Embassy Suites

Houston, Texas  
Entergy Thermal  
260,000 sq ft—space cooling

#### ■ Travis Place

Houston, Texas  
Entergy Thermal  
150,000 sq ft—space cooling

#### ■ Hotel

Baltimore, MD  
Veolia Energy Baltimore  
83,454 sq ft—space heating,  
domestic hot water, space cooling



*Renaissance Box*

#### ■ Hotel

Baltimore, MD  
Veolia Energy Baltimore  
21,240 sq ft—space heating,  
domestic hot water, space cooling

#### ■ Hotel

Boston, MA  
Veolia Energy Boston  
388,000 sq ft—space heating,  
domestic hot water, process, kitchen

#### ■ Hotel

Boston, MA  
Veolia Energy Boston  
300,000 sq ft—space heating,  
domestic hot water, process

#### ■ Hotel

Oklahoma City, OK  
Veolia Energy Oklahoma City  
116,000 sq ft—space cooling



*New York by Gehry (photo ©2011 dbox)*



*Embassy Suites*

### Residential

#### ■ New York by Gehry

New York City, NY  
Con Edison Steam Operations  
1,037,000 sq ft—space heating,  
domestic hot water

#### ■ The Chetrit Group

New York City, NY  
Con Edison Steam Operations  
556,415 sq ft—space heating,  
domestic hot water, other

#### ■ Renaissance Box

St. Paul, MN  
District Energy St. Paul  
66,325 sq ft—space heating,  
space cooling, domestic hot water

### Residential - cont.

#### ■ Commerce Building

St. Paul, MN  
District Energy St. Paul  
127,000 sq ft—space heating,  
space cooling



Commerce Building

#### ■ Tilsner Artists' Cooperative

St. Paul, MN  
District Energy St. Paul  
110,000 sq ft—space heating,  
space cooling, domestic hot water



Tilsner Artists' Cooperative

#### ■ 2 E. Erie

Chicago, IL  
Thermal Chicago  
40,000 sq ft—space cooling



2 E. Erie



Indiana University Emerging Technology Center

### School, Hospital, Institution

#### ■ Indiana University Emerging Technology Center

Indianapolis, IN  
Citizens Thermal Energy  
70,000 square feet—space cooling



New Wishard Hospital

#### ■ New Wishard Hospital

Indianapolis, IN  
Citizens Thermal Energy  
1,200,000 sq ft—space cooling

#### ■ John Jay College

New York City, NY  
Con Edison Steam Operations  
749,133 sq ft—space heating,  
domestic hot water, other



Knight Hall

#### ■ Knight Hall (LEED Gold)

College Park, MD  
University of Maryland  
55,000 sq ft—space heating,  
domestic hot water

#### ■ NYU Ambulatory Care

New York City, NY  
Con Edison Steam Operations  
50,000 sq ft—space heating,  
domestic hot water, other

#### ■ Detroit Medical Center, Rehabilitation Institute of Michigan

Detroit, MI  
Detroit Thermal  
300,000 sq ft—space heating

#### ■ Gillette Children's Specialty Health Care

St. Paul, MN  
District Energy St. Paul  
55,000 sq ft—space heating



John Jay College



### School, Hospital, Institution - cont.

#### ■ Louisiana Cancer Research Center

New Orleans, LA  
Entergy Thermal  
240,000 sq ft—space heating,  
space cooling, domestic hot water



*Louisiana Cancer Research Center*

#### ■ Virginia Mason Medical Tower

Seattle, WA  
Seattle Steam  
266,193 sq ft—space heating,  
domestic hot water, process



*Virginia Mason Medical Tower*

#### ■ Science Teaching and Student Services Building (LEED Gold)

Minneapolis, MN  
University of Minnesota  
58,938 sq ft—space heating,  
space cooling

#### ■ College of Education Addition (LEED Platinum)

Albuquerque, NM  
University of New Mexico  
24,000 sq ft—space heating,  
space cooling, domestic hot water

#### ■ Domenici Center for Health Sciences Education (LEED Gold)

Albuquerque, NM  
University of New Mexico  
106,884 sq ft—space heating,  
space cooling, domestic hot water

#### ■ Science and Math Learning Center (LEED Gold)

Albuquerque, NM  
University of New Mexico  
60,127 sq ft—space heating,  
space cooling, domestic hot water

#### ■ Norm Hackerman Building (NHB) (LEED certification pending)

Austin, TX  
University of Texas at Austin  
256,000 sq ft—space heating,  
space cooling, domestic hot water,  
humidification, process

#### ■ Student Activities Center (LEED certification pending)

Austin, TX  
University of Texas at Austin  
131,500 sq ft—space heating,  
space cooling, domestic hot water,  
humidification, process

#### ■ Primary Care Center Annex (LEED base certification)

Charlottesville, VA  
University of Virginia  
13,484 sq ft—space heating,  
space cooling, domestic hot water,  
humidification



*College of Education Addition (credit: Michelle Mellor)*



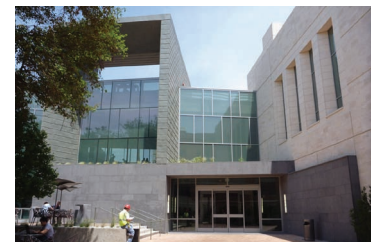
*Domenici Center for Health Sciences Education (credit: Michelle Mellor)*



*Science and Math Learning Center (credit: Michelle Mellor)*



*Norm Hackerman Building (credit: Ryan Reid)*



*Student Activities Center (credit: Ryan Reid)*



### School, Hospital, Institution - cont.

#### ■ Focused Ultrasound

Charlottesville, VA  
University of Virginia  
1,690 sq ft— space cooling

#### ■ Carter-Harrison Research Building

Charlottesville, VA  
University of Virginia  
200,422 sq ft— space heating,  
space cooling, domestic hot water,  
humidification, refrigeration

#### ■ South Lawn (LEED certification pending)

Charlottesville, VA  
University of Virginia  
111,716 sq ft— space heating,  
space cooling, domestic hot water,  
humidification

#### ■ Claude Moore Medical Education Building (LEED Silver)

Charlottesville, VA  
University of Virginia  
60,582 sq ft— space heating,  
space cooling, domestic hot water,  
humidification

#### ■ Bavaro Hall (LEED Gold)

Charlottesville, VA  
University of Virginia  
65,000 sq ft— space heating,  
space cooling, domestic hot water,  
humidification

#### ■ School

Baltimore, MD  
Veolia Energy Baltimore  
297,984 sq ft

#### ■ Healthcare Campus

Boston, MA  
Veolia Energy Boston  
2,787,186 sq ft— space heating,  
space cooling, domestic hot water,  
humidification, process, kitchen

#### ■ Church

Boston, MA  
Veolia Energy Boston  
20,000 sq ft— space heating



South Lawn



Claude Moore Medical Education Building



Bavaro Hall

#### ■ Research Facility (LEED Silver)

Philadelphia, PA  
Veolia Energy Philadelphia  
130,000 sq ft— space heating,  
domestic hot water, process

#### ■ Research Facility

Philadelphia, PA  
Veolia Energy Philadelphia  
500,000 sq ft— space heating,  
domestic hot water, humidification,  
process

#### ■ Office Building

Philadelphia, PA  
Veolia Energy Philadelphia  
114,840 sq ft— space heating,  
space cooling, domestic hot water



Louise Building



Rochat Building

### Other

#### ■ Louise Building

St. Paul, MN  
District Energy St. Paul  
11,700 sq ft— space heating,  
domestic hot water

#### ■ Rochat Building

St. Paul, MN  
District Energy St. Paul  
9,100 sq ft— space heating,  
domestic hot water

### Commercial – Mixed Use

- **Jumeirah Lake Towers (8)**  
Dubai, UAE  
Palm District Cooling  
4,624,648 sq ft—space cooling
- **Palm Jumeirah Trunk–High Rise Building**  
Dubai, UAE  
Palm District Cooling  
731,809 sq ft—space cooling
- **Jumeirah Lake Towers (45)**  
Dubai, UAE  
Palm District Cooling  
25,201,007 sq ft—space cooling
- **Palm Jumeirah Trunk–Mid Rise and High-Rise (50)**  
Dubai, UAE  
Palm District Cooling  
18,035,202 sq ft—space cooling
- **Discovery Gardens–Mid Rise**  
Dubai, UAE  
Palm District Cooling  
18,035,202 sq ft—space cooling
- **Ibn Battuta–Shopping Mall, Hotel & Gate Complex**  
Dubai, UAE  
Palm District Cooling  
4,545,556 sq ft—space cooling
- **The Gate**  
Doha, Qatar  
Qatar Cool  
935,684 sq ft—space cooling



*Jumeirah Lake Towers (8)*



*Palm Jumeirah Trunk–Mid Rise and High-Rise*



*Discovery Gardens–Mid Rise*



*Ibn Battuta Shopping Mall, Hotel & Gate Complex*



*The Gate*

### Commercial – Office

- **Control Tower**  
Motor City, Dubai, UAE  
Emirates District Cooling–Emicool  
562,000 sq ft—space cooling
- **Al Tamimi Investment Ltd.**  
Motor City, Dubai, UAE  
Emirates District Cooling–Emicool  
203,323 sq ft—space cooling
- **Kojak Group of Companies**  
Motor City, Dubai, UAE  
Emirates District Cooling–Emicool  
70,478 sq ft—space cooling
- **Aswan Developers Inc.**  
Motor City, Dubai, UAE  
Emirates District Cooling–Emicool  
89,015 sq ft—space cooling
- **Al Tamimi Investment Ltd.**  
Motor City, Dubai, UAE  
Emirates District Cooling–Emicool  
92,243 sq ft—space cooling
- **BK Gulf**  
Dubai Investment Park, Dubai, UAE  
Emirates District Cooling–Emicool  
57,407 sq ft—space cooling
- **Aal Mir Trading**  
Dubai Investment Park, Dubai, UAE  
Emirates District Cooling–Emicool  
30,698 sq ft—space cooling
- **TRADE XME**  
Dubai Investment Park, Dubai, UAE  
Emirates District Cooling–Emicool  
41,183 sq ft—space cooling
- **Arabian Construction LLC**  
Dubai Investment Park, Dubai, UAE  
Emirates District Cooling–Emicool  
79,339 sq ft—space cooling

### Commercial – Office - cont.

- **Al-Jazeera**  
Doha, Qatar  
Qatar Cool  
237,180 sq ft—space cooling
- **Thamer Tower**  
Doha, Qatar  
Qatar Cool  
270,452 sq ft—space cooling
- **Gemplex I,II,III - DMCC0-mid-rise (3)**  
Dubai, UAE  
Palm District Cooling  
786,627 sq ft—space cooling
- **Dar Kinda Commercial Broker**  
Dubai Investment Park, Dubai, UAE  
Emirates District Cooling–Emicool  
140,644 sq ft—space cooling
- **MA Capital**  
Dubai Investment Park, Dubai, UAE  
Emirates District Cooling–Emicool  
22,969 sq ft—space cooling
- **Arabian Construction LLC**  
Dubai Investment Park, Dubai, UAE  
Emirates District Cooling–Emicool  
68,079 sq ft—space cooling



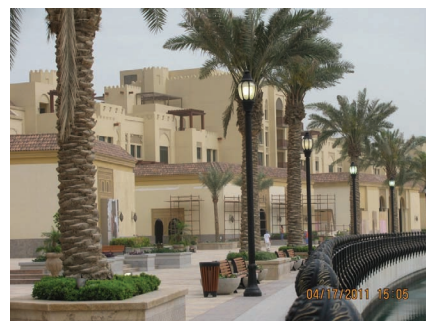
Al-Jazeera



Thamer Tower



Gemplex I,II,III



Parcel-12&13

### Commercial – Retail/Manufacturing

- **All Day Shopping Center at KV**  
Dubai, UAE  
Empower  
13,186 sq ft—space cooling
- **Fox Hill 6**  
Motor City, Dubai, UAE  
Emirates District Cooling–Emicool  
600,000 sq ft—space cooling
- **Shop 1**  
Motor City, Dubai, UAE  
Emirates District Cooling–Emicool  
120,000 sq ft—space cooling
- **Shop 2**  
Motor City, Dubai, UAE  
Emirates District Cooling–Emicool  
120,000 sq ft—space cooling
- **Shop 3**  
Motor City, Dubai, UAE  
Emirates District Cooling–Emicool  
120,000 sq ft—space cooling
- **Shop 4**  
Motor City, Dubai, UAE  
Emirates District Cooling–Emicool  
120,000 sq ft—space cooling
- **GC Supermarket**  
Motor City, Dubai, UAE  
Emirates District Cooling–Emicool  
13,000 sq ft—space cooling

### Entertainment, Cultural or Sporting Center

- **Parcel-12&13 (ETS-24)**  
Doha, Qatar  
Qatar Cool  
170,474 sq ft—space cooling
- **Parcel-14&15 (ETS-31)**  
Doha, Qatar  
Qatar Cool  
116,674 sq ft—space cooling
- **Parcel-16 (ETS-34)**  
Doha, Qatar  
Qatar Cool  
154,080 sq ft—space cooling



### Entertainment, Cultural or Sporting Center - cont.

- **Parcel-17 (ETS-35a)**  
Doha, Qatar  
Qatar Cool  
163,660 sq ft—space cooling
- **Parcel-18 (ETS-36a)**  
Doha, Qatar  
Qatar Cool  
141,851 sq ft—space cooling

### Hotel

- **Al Bateen Hotel at JBR Extension**  
Dubai, UAE  
Empower  
360,665 sq ft—space cooling
- **Palm Jumeirah Crescent-2 hotels, 1 residence**  
Dubai, UAE  
Palm District Cooling  
2,012,852 sq ft—space cooling, kitchen
- **Palm Jumeirah Hotels (11)**  
Dubai, UAE  
Palm District Cooling  
16,748,644 sq ft—space cooling, kitchen



Parcel-18



Palm Jumeirah Hotels



Garden Furnished Apartments-Mid Rise

### Residential

- **Botanica Building at JBR Extension**  
Dubai, UAE  
Empower  
641,144 sq ft—space cooling
- **Skycourts at Dubai Land Residence Complex (6)**  
Dubai, UAE  
Empower  
4,500,000 sq ft—space cooling
- **Garden Furnished Apartments-Mid Rise (8)**  
Dubai, UAE  
Palm District Cooling  
1,668,492 sq ft—space cooling

- **Parcel-18 (ETS-36)**  
Doha, Qatar  
Qatar Cool  
411,733 sq ft—space cooling
- **Parcel-12 & 13 (ETS-24)**  
Doha, Qatar  
Qatar Cool  
89,771 sq ft—space cooling
- **Parcel-14&15 (ETS-31)**  
Doha, Qatar  
Qatar Cool  
92,562 sq ft—space cooling
- **Parcel-06a,b,c (ETS-09)**  
Doha, Qatar  
Qatar Cool  
1,235,199 sq ft—space cooling
- **Parcel-14A (ETS-27)**  
Doha, Qatar  
Qatar Cool  
409,042 sq ft—space cooling
- **Parcel-16 (ETS-34)**  
Doha, Qatar  
Qatar Cool  
38,840 sq ft—space cooling
- **Parcel-09B (ETS-17)**  
Doha, Qatar  
Qatar Cool  
411,733 sq ft—space cooling
- **Parcel-17 (ETS-35a)**  
Doha, Qatar  
Qatar Cool  
41,203 sq ft—space cooling
- **Parcel-18 (ETS-36a)**  
Doha, Qatar  
Qatar Cool  
42,169 sq ft—space cooling
- **Viva Bahriya-29**  
Doha, Qatar  
Qatar Cool  
459,903 sq ft—space cooling

### Residential - cont.

#### ■ LPVW-02, 07, 16, 23

Doha, Qatar  
Qatar Cool  
28,794 sq ft—space cooling

#### ■ LPVE-001-002 ,050-051, 20, 21, 27, 28, 44

Doha, Qatar  
Qatar Cool  
78,579 sq ft—space cooling



LPV Residences

#### ■ LPVC-01, 06, 08, 12, 14, 15, 38, 39

Doha, Qatar  
Qatar Cool  
59,742 sq ft—space cooling

#### ■ Jumana Tower

Doha, Qatar  
Qatar Cool  
411,733 sq ft—space cooling

#### ■ Lotus Tower

Doha, Qatar  
Qatar Cool  
235,070 sq ft—space cooling



Lotus Tower



West Bay Towers

#### ■ West Bay Towers

Doha, Qatar  
Qatar Cool  
253,229 sq ft—space cooling

#### ■ Shakespeare Circus 1

Motor City, Dubai, UAE  
Emirates District Cooling–Emicool  
117,826 sq ft—space cooling

#### ■ Shakespeare Circus 2

Motor City, Dubai, UAE  
Emirates District Cooling–Emicool  
125,748 sq ft—space cooling

#### ■ Shakespeare Circus 3

Motor City, Dubai, UAE  
Emirates District Cooling–Emicool  
125,748 sq ft—space cooling

#### ■ Norton Court 1

Motor City, Dubai, UAE  
Emirates District Cooling–Emicool  
92,572 sq ft—space cooling

#### ■ Norton Court 2

Motor City, Dubai, UAE  
Emirates District Cooling–Emicool  
47,190 sq ft—space cooling

#### ■ Norton Court 3

Motor City, Dubai, UAE  
Emirates District Cooling–Emicool  
92,570 sq ft—space cooling

#### ■ Norton Court 1

Motor City, Dubai, UAE  
Emirates District Cooling–Emicool  
47,190 sq ft—space cooling

#### ■ Fox Hill 1

Motor City, Dubai, UAE  
Emirates District Cooling–Emicool  
29,275 sq ft—space cooling

#### ■ Fox Hill 2

Motor City, Dubai, UAE  
Emirates District Cooling–Emicool  
42,364 sq ft—space cooling

#### ■ Fox Hill 3

Motor City, Dubai, UAE  
Emirates District Cooling–Emicool  
436,564 sq ft—space cooling

#### ■ Fox Hill 4

Motor City, Dubai, UAE  
Emirates District Cooling–Emicool  
507,229 sq ft—space cooling

#### ■ Fox Hill 5

Motor City, Dubai, UAE  
Emirates District Cooling–Emicool  
658,917 sq ft—space cooling

#### ■ Fox Hill 7

Motor City, Dubai, UAE  
Emirates District Cooling–Emicool  
492,843 sq ft—space cooling

#### ■ Fox Hill 8

Motor City, Dubai, UAE  
Emirates District Cooling–Emicool  
503,877 sq ft—space cooling

### Residential - cont.

#### ■ Fox Hill 9

Motor City, Dubai, UAE  
Emirates District Cooling–Emicool  
149,861 sq ft—space cooling

#### ■ Sherlock House 1

Motor City, Dubai, UAE  
Emirates District Cooling–Emicool  
55,425 sq ft—space cooling

#### ■ Sherlock House 2

Motor City, Dubai, UAE  
Emirates District Cooling–Emicool  
44,252 sq ft—space cooling

#### ■ Regent House 1

Motor City, Dubai, UAE  
Emirates District Cooling–Emicool  
29,007 sq ft—space cooling

#### ■ Regent House 2

Motor City, Dubai, UAE  
Emirates District Cooling–Emicool  
17,832 sq ft—space cooling

#### ■ Sherlock Circus 1

Motor City, Dubai, UAE  
Emirates District Cooling–Emicool  
25,005 sq ft—space cooling

#### ■ Sherlock Circus 2

Motor City, Dubai, UAE  
Emirates District Cooling–Emicool  
26,622 sq ft—space cooling

#### ■ Sherlock Circus 3

Motor City, Dubai, UAE  
Emirates District Cooling–Emicool  
24,746 sq ft—space cooling

#### ■ Marlowe House 1

Motor City, Dubai, UAE  
Emirates District Cooling–Emicool  
30,935 sq ft—space cooling

#### ■ Marlowe House 2

Motor City, Dubai, UAE  
Emirates District Cooling–Emicool  
25,609 sq ft—space cooling

#### ■ Dickens Circus 1

Motor City, Dubai, UAE  
Emirates District Cooling–Emicool  
36,966 sq ft—space cooling

#### ■ Dickens Circus 2

Motor City, Dubai, UAE  
Emirates District Cooling–Emicool  
47,120 sq ft—space cooling

#### ■ Dickens Circus 3

Motor City, Dubai, UAE  
Emirates District Cooling–Emicool  
32,664 sq ft—space cooling

#### ■ Benneth House 1

Motor City, Dubai, UAE  
Emirates District Cooling–Emicool  
68,393 sq ft—space cooling

#### ■ Benneth House 2

Motor City, Dubai, UAE  
Emirates District Cooling–Emicool  
34,766 sq ft—space cooling

#### ■ Widcombe House 1

Motor City, Dubai, UAE  
Emirates District Cooling–Emicool  
41,864 sq ft—space cooling

#### ■ Widcombe House 2

Motor City, Dubai, UAE  
Emirates District Cooling–Emicool  
5,844 sq ft—space cooling

#### ■ Widcombe House 3

Motor City, Dubai, UAE  
Emirates District Cooling–Emicool  
35,416 sq ft—space cooling

#### ■ Widcombe House 4

Motor City, Dubai, UAE  
Emirates District Cooling–Emicool  
39,194 sq ft—space cooling

#### ■ Claverton House 1

Motor City, Dubai, UAE  
Emirates District Cooling–Emicool  
46,347 sq ft—space cooling

#### ■ Claverton House 2

Motor City, Dubai, UAE  
Emirates District Cooling–Emicool  
39,391 sq ft—space cooling

#### ■ Barton House 1

Motor City, Dubai, UAE  
Emirates District Cooling–Emicool  
88,577 sq ft—space cooling

#### ■ Barton House 2

Motor City, Dubai, UAE  
Emirates District Cooling–Emicool  
71,929 sq ft—space cooling

#### ■ Bungalows (42)

Motor City, Dubai, UAE  
Emirates District Cooling–Emicool  
178,374 sq ft (total)—space cooling

#### ■ Family Villas (27)

Motor City, Dubai, UAE  
Emirates District Cooling–Emicool  
155,925 sq ft (total)—space cooling

#### ■ Townhouses (72)

Motor City, Dubai, UAE  
Emirates District Cooling–Emicool  
307,487 sq ft (total)—space cooling

#### ■ Luxury Villas (4)

Motor City, Dubai, UAE  
Emirates District Cooling–Emicool  
29,285 sq ft (total)—space cooling

#### ■ Terrace Apartments (67)

Motor City, Dubai, UAE  
Emirates District Cooling–Emicool  
288,541 sq ft (total)—space cooling

#### ■ Ewan (24)

Dubai Investment Park, Dubai, UAE  
Emirates District Cooling–Emicool  
77,483 sq ft (total)—space cooling

#### ■ West Luxury Villas (14)

Dubai Investment Park, Dubai, UAE  
Emirates District Cooling–Emicool  
94,350 sq ft (total)—space cooling



### Residential - cont.

- **West Family Villas (82)**  
Dubai Investment Park, Dubai, UAE  
Emirates District Cooling–Emicool  
393,050 sq ft (total)—space cooling
- **West Bungalows (111)**  
Dubai Investment Park, Dubai, UAE  
Emirates District Cooling–Emicool  
578,525 sq ft (total)—space cooling
- **North West (8)**  
Dubai Investment Park, Dubai, UAE  
Emirates District Cooling–Emicool  
65,422 sq ft (total)—space cooling
- **Garden East Phase 1**  
Dubai Investment Park, Dubai, UAE  
Emirates District Cooling–Emicool  
54,035 sq ft (total)—space cooling
- **Phase 1 Family Villa (13)**  
Dubai Investment Park, Dubai, UAE  
Emirates District Cooling–Emicool  
6,500 sq ft (total)—space cooling
- **Phase 1 Townhouse (40)**  
Dubai Investment Park, Dubai, UAE  
Emirates District Cooling–Emicool  
15,520 sq ft (total)—space cooling
- **Phase 1 Lake Apartment (13)**  
Dubai Investment Park, Dubai, UAE  
Emirates District Cooling–Emicool  
14,124 sq ft (total)—space cooling
- **Phase 1 Terrace Apartment (15)**  
Dubai Investment Park, Dubai, UAE  
Emirates District Cooling–Emicool  
56,287 sq ft (total)—space cooling

### School, Hospital, Institution

- **Herio Watt University at Knowledge Village (KV)**  
Dubai, UAE  
Empower  
179,904 sq ft—space cooling
- **IMT Phase II at Knowledge Village (KV)**  
Dubai, UAE  
Empower  
63,000 sq ft—space cooling
- **Manipal ETA at Knowledge Village (KV)**  
Dubai, UAE  
Empower  
506,729 sq ft—space cooling

## Submit your entries for 2011

Make plans now to photograph and enter your customer buildings that commit or recommit for your district energy service during 2011! The deadline for submittal of buildings for 2011 is **Fri., April 13, 2012**.

To enter your newly committed, recommitted or connected customers for 2011, please download and complete the Excel® template found at <http://www.districtenergy.org/assets/Forms/2011DESpaceblankform.xls>.

Please use the form exactly as provided and fill in all appropriate cells to facilitate our compilation of the data. Please list all buildings within one document and please reference photos by their filename. Be sure to send as many building photographs as possible. Submit the final document and photos to Len Phillips at [len.idea@districtenergy.org](mailto:len.idea@districtenergy.org). Thank you.

To access past issues of *District Energy Space*, visit <http://www.districtenergy.org/district-energy-space>.



24 Lyman Street, Suite 230  
Westborough, MA 01581 USA

Tel: +1 508-366-9339

Fax +1 508-366-0019

[www.districtenergy.org](http://www.districtenergy.org)

Copyright ©2011 International District Energy Association. ALL RIGHTS RESERVED. This publication contains proprietary content of International District Energy Association (IDEA) which is protected by copyright, trademark and other intellectual property rights. No part of this publication or any "Information" (as defined below) contained herein may be reproduced (by photocopying or otherwise), transmitted, stored (in a database, retrieval system, or otherwise), or otherwise used through any means without the express prior written permission of IDEA. "Information" means any and all information, data, specific products, services, processes, procedures, designs, techniques, technical data, editorial material, advice, instructions, opinions or any other content appearing or referenced in this publication. IDEA has prepared this publication for informational purposes only. IDEA has exercised reasonable care in producing the Information contained in this publication. The appearance of any Information in this publication does not constitute endorsement, warranty or guaranty by IDEA of any product, service, process, procedure, design or the like. IDEA does not make any representation or warranties about the suitability or accuracy of the Information in this publication or that the Information in this publication is error-free. All Information presented in this work is provided "as is" without warranty of any kind. IDEA disclaims all warranties and conditions of any kind, express or implied, including all implied warranties and conditions of merchantability, fitness for a particular purpose, title and non-infringement. The Information contained in this publication may be superseded, may contain errors, and/or may include inaccuracies. IDEA shall not be liable for any special, indirect, incidental, consequential or any damages whatsoever resulting from inconvenience, or loss of use, resources, or profits, whether in an action of contract, negligence or other tortious action, arising out of or in connection with the use or performance of any of the Information available in this publication even if IDEA has been advised of the possibility of such damages or losses. IDEA invites comments, criticisms and suggestions regarding the subject matter in this publication, including notice of errors or omissions.