

# District Energy Space 2013



## Spotlighting Industry Growth

More than 88.5 million square feet reported

# District Energy Space 2013

## Industry Growth around the World

**Dedicated to the growth and utilization of district energy as a means to enhance energy efficiency, provide more sustainable and reliable energy infrastructure, and contribute to improving the global environment.**



The publication of ***District Energy Space*** has become an annual tradition for the International District Energy Association since 1990. This issue features a compilation of data provided by our members including the number of buildings and their area in square feet that have been committed or recommitted to district energy service in North America and beyond North America during the calendar year 2013, or previously unreported for recent years.

Established in 1909, the International District Energy Association (IDEA) serves as a vital communications and information hub for the district energy industry, connecting industry professionals and advancing the technology around the world. With headquarters just outside of Boston, Mass., IDEA comprises over 1,700 district heating and cooling system executives, managers, engineers, consultants and equipment suppliers from 25 countries. IDEA supports the growth and utilization of district energy as a means to conserve fuel, increase energy efficiency and reduce emissions to improve the global environment.

Each year, IDEA asks all of its member systems to provide information on buildings that committed or recommitted to district energy service during the previous calendar year. For each building, District Energy Space provides the following information:

- Building name and/or type
- Service provider's name and location
- Building area served in square feet
- Services provided (heating, domestic hot water, laundry, cooling, ice-making, pool warming, etc.)

***District Energy Space*** not only enables IDEA to document the year-to-year growth experienced by our member systems, but also can be a valuable marketing asset for your organization. During the IDEA 105th Annual Conference in Seattle, Washington, June 8–11, 2014, IDEA recognized and presented awards to those systems submitting the greatest amount of total square footage and the greatest number of total buildings for 2013 for both North America and Beyond North America. All systems submitting growth data will receive an IDEA *Certificate of Participation*.

***District Energy Space 2013*** and previous issues are available in PDF format by downloading from IDEA's Web site, <http://www.districtenergy.org/district-energy-space>



## Summary for 2013

District Energy system growth has been strong. Our members reported that **114 customer buildings** in North America totaling **30,666,772 sq ft** of building space were committed or recommitted to district energy service during 2012, or were previously unreported. That compares with 274 buildings and 42,575,112 square feet during 2012.

The North American total of **30,666,772 sq ft** added in 2013 to IDEA's running total of square footage of 584,761,556 sq ft committed to North American district energy systems since 1990, brings the current total for North America reported since 1990 to **615,428,328 sq ft**.

IDEA is also pleased to be able to report strong system growth from beyond North America. IDEA members reported an additional **1,175 buildings** and **57,848,702 sq ft** were reported for 2013. That compares with 521

buildings and **65,304,430 sq ft** during 2012. (Growth beyond North America for 2013 reflects the acquisition of Palm Utilities by Empower during 2013, and the inclusion of Palm Utilities' customer growth for 2013 in the Empower totals.)

## Stand Up and Be Recognized for 2014

Make plans now to photograph and enter your customer buildings that commit or recommit for your district energy service during 2014! The deadline for submittal of buildings for 2014 is **Fri., April 17, 2015**.

Continuing our tradition, during the IDEA 106th annual conference in Boston, Massachusetts, June 28–July 1, 2015, IDEA will congratulate and present awards to those systems submitting the greatest amount of total square footage and the greatest number of total buildings for 2014 for both North America and Beyond North America. We look forward to seeing you there!

### 2013 New Square Footage Reported\*

Category	North America	Beyond North America
Commercial-Mixed Use	943,553	25,461,246
Commercial-Office	10,923,052	275,558
Commercial-Retail/Manufacturing	552,302	4,280,926
Commercial-Other	78,000	0
Entertainment, Cultural or Sporting Center	1,136,997	1,094,442
Government	3,597,626	5,381,266
Hotel	5,027,431	3,749,868
Residential	2,223,825	16,923,118
School, Hospital or Institution	4,913,933	0
Other	1,270,023	449,788
<b>Square Footage Reported 2013</b>	<b>30,666,722</b>	<b>57,848,703</b>
<b>2013 Total Reported in North America and Beyond North America</b>	<b>88,515,424</b>	

\* All entries are newly signed, connected or renewed customers during calendar year 2013, (*Renewal* means contractually recommitted to a long-term service agreement of 10 years or greater.)

## Commercial—Mixed Use

- **Lawson Commons (LEED Silver)**  
St. Paul, MN  
District Energy St. Paul  
472,000 sq ft—space heating, space cooling, domestic hot water, kitchen



Lawson Commons

- **Railroader Printing Building**  
St. Paul, MN  
District Energy St. Paul  
40,000 sq ft—space heating
- **Canopy Lofts**  
Lincoln, Nebraska  
District Energy Corporation  
117,000 sq ft—space heating, space cooling, domestic hot water
- **Prescott**  
North Vancouver, BC, Canada  
Lonsdale Energy Corp.  
133,382 sq ft—space heating, domestic hot water



Prescott Building

- **111 East 3rd**  
North Vancouver, BC, Canada  
Lonsdale Energy Corp.  
61,584 sq ft—space heating, domestic hot water

- **700 Marine Drive**  
North Vancouver, BC, Canada  
Lonsdale Energy Corp.  
46,806 sq ft—space heating, domestic hot water



700 Marine Drive

- **Wilder Building**  
Rochester, NY  
Rochester District Heating Cooperative  
60,000 sq ft—space heating, kitchen



Wilder Building

## Commercial—Office

- **Office Building**  
New York, NY  
Con Edison Steam Operations  
350,000 sq ft—space heating, domestic hot water
- **Office Building**  
New York, NY  
Con Edison Steam Operations  
1,900,000 sq ft—space heating, domestic hot water
- **Office Building (LEED Gold)**  
New York, NY  
Con Edison Steam Operations  
360,000 sq ft—space heating
- **Office Building**  
New York, NY  
Con Edison Steam Operations  
407,000 sq ft—space heating, domestic hot water

- **Office Building**  
New York, NY  
Con Edison Steam Operations  
352,180 sq ft—space heating

- **Saint Paul Public Housing Authority**  
St. Paul, MN  
District Energy St. Paul  
378,100 sq ft—space heating, space cooling, domestic hot water

- **Travelers**  
St. Paul, MN  
District Energy St. Paul  
1,259,228 sq ft—space heating, space cooling, data center

- **First National Bank Building**  
St. Paul, MN  
District Energy St. Paul  
662,845 sq ft—space heating



National Bank Building

- **Ecolab**  
St. Paul, MN  
District Energy St. Paul  
363,977 sq ft—space heating, space cooling



Ecolab

- **720 Copping**  
North Vancouver, BC, Canada  
Lonsdale Energy Corp.  
17,365 sq ft—space heating, domestic hot water



720 Copping

- **Commercial Office Building**  
Philadelphia, PA  
Veolia Energy Philadelphia  
177,500 sq ft—space heating, domestic hot water, humidification

- **Commercial Office Building**  
Philadelphia, PA  
Veolia Energy Philadelphia  
243,700 sq ft—space heating, domestic hot water

- **Commercial Office Building**  
Philadelphia, PA  
Veolia Energy Philadelphia  
71,000 sq ft—space heating, domestic hot water

- **Commercial Office Building**  
Philadelphia, PA  
Veolia Energy Philadelphia  
49,680 sq ft—space heating, domestic hot water

- **Commercial Office Building**  
Philadelphia, PA  
Veolia Energy Philadelphia  
210,000 sq ft—space heating, domestic hot water

- **Commercial Office Building**  
Philadelphia, PA  
Veolia Energy Philadelphia  
648,243 sq ft—space heating, space cooling, domestic hot water

- **Commercial Office Building**  
Boston, MA  
Veolia Energy Boston  
5,000 sq ft—space heating

- **Commercial Office Building**  
Boston, MA  
Veolia Energy Boston  
274,720 sq ft—space heating, domestic hot water, kitchen

## Commercial—Office cont.

- **Commercial Office Building**  
Boston, MA  
Veolia Energy Boston  
750,000 sq ft—space heating
- **Commercial Office Building**  
Boston, MA  
Veolia Energy Boston  
120,000 sq ft—space heating
- **Commercial Office Building**  
Boston, MA  
Veolia Energy Boston  
1,355,612 sq ft—space heating, space cooling, domestic hot water
- **Commercial Office Building**  
Baltimore, MD  
Veolia Energy Baltimore  
160,536 sq ft—space heating, space cooling, kitchen
- **Commercial Office Building**  
Grand Rapids, MI  
Veolia Energy Grand Rapids  
70,000 sq ft—space heating
- **Commercial Office Building**  
Grand Rapids, MI  
Veolia Energy Grand Rapids  
499,994 sq ft—space heating
- **Commercial Office Building**  
Grand Rapids, MI  
Veolia Energy Grand Rapids  
70,000 sq ft—space heating
- **Commercial Office Building**  
Grand Rapids, MI  
Veolia Energy Grand Rapids  
8,886 sq ft—space heating
- **Commercial Office Building**  
Kansas City, MO  
Veolia Energy Kansas City  
12,781 sq ft—space heating
- **Commercial Office Building**  
Oklahoma City, OK  
Veolia Energy Oklahoma City  
83,500 sq ft—space heating, space cooling, domestic hot water, humidification

## Commercial—Retail/Manufacturing

- **Loblaws**  
North Vancouver, BC, Canada  
Lonsdale Energy Corp.  
52,302 sq ft—space heating, domestic hot water



Loblaws

## Commercial—Other

- **Church of Scientology**  
St. Paul, MN  
District Energy St. Paul  
78,000 sq ft—space heating, space cooling
- **McKnight Vision Research Center**  
Miami, FL  
University of Miami  
73,986 sq ft—space cooling

## Entertainment, Cultural or Sporting Center

- **Landmark Center**  
St. Paul, MN  
District Energy St. Paul  
157,600 sq ft—space heating  
DESt Paul Landmark Center
- **213 E 4th Street**  
St. Paul, MN  
District Energy St. Paul  
30,450 sq ft—space heating, space cooling
- **Pinnacle Bank Area**  
Lincoln, Nebraska  
District Energy Corporation  
460,500 sq ft—space heating, space cooling, domestic hot water

- **The Rail Yard**  
Lincoln, Nebraska  
District Energy Corporation  
53,000 sq ft—space heating, space cooling, domestic hot water
- **University Recreation & Wellness Center**  
Minneapolis, MN  
University of Minnesota, Twin Cities  
164,253 sq ft—space heating, space cooling, domestic hot water, humidification, kitchen



University Recreation & Wellness Center

## Government

- **Minnesota State Capital Complex**  
St. Paul, MN  
District Energy St. Paul  
2,334,218 sq ft—space heating, space cooling, data center
- **St. Paul Armory**  
St. Paul, MN  
District Energy St. Paul  
120,000 sq ft—space heating, space cooling
- **State Administration Office**  
Lincoln, Nebraska  
District Energy Corporation  
90,000 sq ft—space heating



State Capital Complex

- **Lancaster County Adult Detention Facility Thermal Energy Facility including Central Utility Plant**  
Lincoln, Nebraska  
District Energy Corporation  
319,000 sq ft—space heating, space cooling



Lancaster County Adult Detention Center

- **West Haymark District Energy System Central Utility Plant**  
Lincoln, Nebraska  
District Energy Corporation  
26,000 sq ft—space heating, space cooling, domestic hot water
- **Local Authorities**  
Cambridge, MA  
Veolia Energy Boston  
146,598 sq ft—space heating
- **Local Authorities**  
Cambridge, MA  
Veolia Energy Boston  
460,000 sq ft—space heating, domestic hot water
- **Local Authorities**  
Baltimore, MD  
Veolia Energy Baltimore  
71,810 sq ft—space heating, space cooling
- **Family Services**  
Tulsa, OK  
Veolia Energy Tulsa  
30,000 sq ft—space heating, space cooling, domestic hot water



## School, Hospital, Institution

- **Hospital**  
New York, NY  
Con Edison Steam Operations  
153,000 sq ft—space heating,  
domestic hot water

- **Regions Hospital**  
St. Paul, MN  
District Energy St. Paul  
984,634 sq ft—space heating,  
space cooling, domestic hot  
water, process



Regions Hospital

- **St. Paul Radiology**  
St. Paul, MN  
District Energy St. Paul  
61,000 sq ft—space heating

- **Bascom Palmer Eye Institute**  
Miami, FL  
University of Miami  
206,937 sq ft—space cooling



Bascom Palmer Eye Institute

- **Cancer & Cardiovascular Research Building**  
Minneapolis, MN  
University of Minnesota, Twin Cities  
287,594 sq ft—space heating,  
space cooling, domestic hot  
water, humidification, process

- **Physics and Nanotechnology Building**  
Minneapolis, MN  
University of Minnesota, Twin Cities  
155,439 sq ft—space heating,  
space cooling, domestic hot  
water, humidification, process



Physics and Nanotechnology Building

- **17th Avenue Residence Hall**  
Minneapolis, MN  
University of Minnesota, Twin Cities  
230,747 sq ft—space heating,  
space cooling, domestic hot  
water, humidification, kitchen



17th Avenue Residence Hall

- **Rotman School for Management addition**  
Toronto, ON, Canada  
University of Toronto  
160,000 sq ft—space heating,  
domestic hot water,  
humidification



University of Toronto Rotman School for Management additio

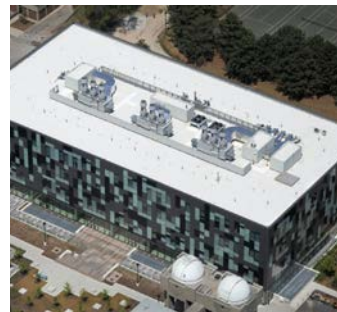
- **Healthcare**  
Philadelphia, PA  
Veolia Energy Philadelphia  
78,000 sq ft—space heating

- **Healthcare**  
Philadelphia, PA  
Veolia Energy Philadelphia  
1,389,838 sq ft—space heating,  
domestic hot water

- **University**  
Boston, MA  
Veolia Energy Boston  
45,388 sq ft—space heating,  
domestic hot water, kitchen

- **University**  
Grand Rapids, MI  
Veolia Energy Grand Rapids  
950,000 sq ft—space heating,  
space cooling

- **Life Sciences Building (LEED Silver)**  
Toronto, ON, Canada  
York University  
163,856 sq ft—space heating,  
space cooling, domestic hot  
water, humidification, kitchen,  
refrigeration



Life Sciences Building

## Hotel

- **Hotel**  
New York, NY  
Con Edison Steam Operations  
297,000 sq ft—space heating,  
domestic hot water

- **Hotel**  
New York, NY  
Con Edison Steam Operations  
837,590 sq ft—space heating,  
domestic hot water

- **Hotel**  
New York, NY  
Con Edison Steam Operations  
383,166 sq ft—space heating,  
domestic hot water

- **Crowne Plaza**  
St. Paul, MN  
District Energy St. Paul  
433,000 sq ft—space heating,  
space cooling, domestic hot  
water, kitchen

- **Double Tree Hotel**  
St. Paul, MN  
District Energy St. Paul  
185,000 sq ft—space heating,  
space cooling, domestic hot  
water, kitchen

- **Hotel**  
Philadelphia, PA  
Veolia Energy Philadelphia  
350,000 sq ft—space heating,  
domestic hot water, kitchen

- **Hotel**  
Boston, MA  
Veolia Energy Boston  
990,828 sq ft—space heating,  
domestic hot water, kitchen

- **Hotel**  
Boston, MA  
Veolia Energy Boston  
388,040 sq ft—space heating,  
domestic hot water, process,  
kitchen

- **Hotel**  
Boston, MA  
Veolia Energy Boston  
880,182 sq ft—space heating

- **Hotel**  
Boston, MA  
Veolia Energy Boston  
282,625 sq ft—space heating,  
kitchen

## Residential

- **Residential**  
New York, NY  
Con Edison Steam Operations  
266,296 sq ft—space heating,  
domestic hot water

- **Residential**  
New York, NY  
Con Edison Steam Operations  
158,400 sq ft—space heating,  
domestic hot water

- **Residential**  
New York, NY  
Con Edison Steam Operations  
504,600 sq ft—space heating,  
domestic hot water

## Residential cont.

- **Residential**  
New York, NY  
Con Edison Steam Operations  
75,256 sq ft—space heating,  
domestic hot water
- **Custom House**  
St. Paul, MN  
District Energy St. Paul  
726,330 sq ft—space heating,  
space cooling, domestic hot  
water



Custom House

- **Metro Center for Independent Living**  
St. Paul, MN  
District Energy St. Paul  
9,625 sq ft—space heating,  
domestic hot water

- **Lowry Hotel**  
St. Paul, MN  
District Energy St. Paul  
163,187 sq ft—space heating,  
space cooling, domestic hot  
water
- **250 E 7th Street**  
St. Paul, MN  
District Energy St. Paul  
30,000 sq ft—space heating
- **HYAD (Housing for Young Adults with Disabilities)**  
North Vancouver, BC, Canada  
Lonsdale Energy Corp.  
16,024 sq ft—space heating,  
domestic hot water



HYAD

- **Queen Mary Homes**  
North Vancouver, BC, Canada  
Lonsdale Energy Corp.  
79,674 sq ft—space heating,  
domestic hot water
- **The Local**  
North Vancouver, BC, Canada  
Lonsdale Energy Corp.  
194,433 sq ft—space heating,  
domestic hot water

## Other

- **Victory Ramp**  
St. Paul, MN  
District Energy St. Paul  
14,000 sq ft—space heating
- **Skyway YMCA**  
St. Paul, MN  
District Energy St. Paul  
65,000 sq ft—space heating,  
space cooling, domestic hot  
water
- **Transportation Authority**  
Philadelphia, PA  
Veolia Energy Philadelphia  
1,145,795 sq ft—space heating,  
domestic hot water
- **Transportation Authority**  
Boston, MA  
Veolia Energy Boston  
45,228 sq ft—space heating
- **Museum**  
Oklahoma City, OK  
Veolia Energy Oklahoma City  
110,000 sq ft—space heating,  
space cooling, domestic hot  
water, humidification
- **Non-Profit**  
Boston, MA  
Veolia Energy Boston  
45,000 sq ft—space heating,  
domestic hot water
- **Meeting House**  
Boston, MA  
Veolia Energy Boston  
100,920 sq ft—space heating,  
domestic hot water
- **Industrial**  
Kansas City, MO  
Veolia Energy Kansas City  
500,000 sq ft—kitchen

## Commercial—Mixed Use

- **JBR Extension – Dream Tower**  
Dubai, UAE  
Emirates Central Cooling Systems Corporation (Empower)  
358,708 sq ft—space cooling



Dream Tower

- **Al Habtoor City**  
Dubai, UAE  
Emirates Central Cooling Systems Corporation (Empower)  
8,398,483 sq ft—space cooling



Al Habtoor

- **Jumeirah Lake Towers**  
Dubai, UAE  
Emirates Central Cooling Systems Corporation (Empower)  
8,222,352 sq ft—space cooling

- **Al Khor Towers**  
Ajman, UAE  
Tabreed  
3,240,529 sq ft—space cooling



Al Khor Towers

- **Sheikh Humaid Bin Rashid Al Nuaimi Building**  
Ajman, UAE  
Tabreed  
387,070 sq ft—space cooling

- **Al Rashidiya Towers**  
Ajman, UAE  
Tabreed  
1,396,467 sq ft—space cooling



Al Rashidiya Towers

- **Shopping Centre + 4 Towers – Horizon Towers**  
Ajman, UAE  
Tabreed  
3,457,637 sq ft—space cooling



Horizon Towers

## Commercial—Office

- **Al Nour Tower**  
Doha, Qatar  
Qatar Cool  
275,558 sq ft—space cooling

## Commercial—Retail/Manufacturing

- **Medina Centrale-07**  
Doha, Qatar  
Qatar Cool  
80,935 sq ft—space cooling
- **Yas Mall**  
Abu Dhabi, UAE  
Tabreed  
4,199,992 sq ft—space cooling

## Entertainment, Cultural or Sporting Center

- **Ajman Sports Club**  
Ajman, UAE  
Tabreed  
599,851 sq ft—space cooling
- **Yas Waterworld**  
Abu Dhabi, UAE  
Tabreed  
494,591 sq ft—space cooling



Yas Waterworld

## Government

- **Abu Dhabi Airport Company – ADAC**  
Abu Dhabi, UAE  
Tabreed  
878,873 sq ft—space cooling
- **Crown Prince Court**  
Abu Dhabi, UAE  
Tabreed  
534,837 sq ft—space cooling
- **Al Minhad Base 1**  
Dubai, UAE  
Tabreed  
118,403 sq ft—space cooling

- **Ministry of Foreign Affairs Building**  
Abu Dhabi, UAE  
Tabreed  
745,379 sq ft—space cooling



Ministry of Foreign Affairs Building

- **Yas Island Police Station**  
Abu Dhabi, UAE  
Tabreed  
175,990 sq ft—space cooling



Yas Island Police Station

- **Fujairah Naval Base**  
Fujairah, UAE  
Tabreed  
775,002 sq ft—space cooling

- **Muleiha 1**  
Sharjah, UAE  
Tabreed  
1,076,391 sq ft—space cooling

- **Muleiha 2**  
Abu Dhabi, UAE  
Tabreed  
1,076,391 sq ft—space cooling



## Hotel

- **Palm Jumeirah Crescent**  
Dubai, UAE  
Emirates Central Cooling Systems Corporation (Empower)  
2,689,614 sq ft—space cooling
- **Rabban Suites**  
Doha, Qatar  
Qatar Cool  
575,874 sq ft—space cooling
- **Hala Hotel**  
Doha, Qatar  
Qatar Cool  
484,380 sq ft—space cooling

## Residential

- **Courtyard I**  
Dubai Mirdif, Dubai, UAE  
Emirates District Cooling (Emicool)  
147,686 sq ft—space cooling
- **Courtyard II**  
Dubai Mirdif, Dubai, UAE  
Emirates District Cooling (Emicool)  
157,796 sq ft—space cooling
- **Garden Apartments**  
Dubai Mirdif, Dubai, UAE  
Emirates District Cooling (Emicool)  
182,351 sq ft—space cooling
- **Gate Apartments**  
Dubai Mirdif, Dubai, UAE  
Emirates District Cooling (Emicool)  
82,469 sq ft—space cooling
- **Terraced Apartments**  
Dubai Mirdif, Dubai, UAE  
Emirates District Cooling (Emicool)  
85,003 sq ft—space cooling
- **Cinema & Teen Centre**  
Dubai Mirdif, Dubai, UAE  
Emirates District Cooling (Emicool)  
77,829 sq ft—space cooling
- **Abbey Crescent 1**  
Motor City, Dubai, UAE  
Emirates District Cooling (Emicool)  
107,080 sq ft—space cooling
- **Abbey Crescent 2**  
Motor City, Dubai, UAE  
Emirates District Cooling (Emicool)  
32,580 sq ft—space cooling

- **Barton House 1**  
Motor City, Dubai, UAE  
Emirates District Cooling (Emicool)  
88,577 sq ft—space cooling
- **Bennett House 1**  
Motor City, Dubai, UAE  
Emirates District Cooling (Emicool)  
50,525 sq ft—space cooling
- **Bennett House 2**  
Motor City, Dubai, UAE  
Emirates District Cooling (Emicool)  
44,315 sq ft—space cooling



Bennett House 2

- **Bungalow**  
Motor City, Dubai, UAE  
Emirates District Cooling (Emicool)  
225,091 sq ft—space cooling



Bungalow Villa

- **Claverton House 1**  
Motor City, Dubai, UAE  
Emirates District Cooling (Emicool)  
44,469 sq ft—space cooling



Claverton House 1

- **Claverton House 2**  
Motor City, Dubai, UAE  
Emirates District Cooling (Emicool)  
40,728 sq ft—space cooling
- **Dickens Circus 1**  
Motor City, Dubai, UAE  
Emirates District Cooling (Emicool)  
79,660 sq ft—space cooling



Dickens Circus 1

- **Dickens Circus 2**  
Motor City, Dubai, UAE  
Emirates District Cooling (Emicool)  
100,700 sq ft—space cooling
- **Dickens Circus 3**  
Motor City, Dubai, UAE  
Emirates District Cooling (Emicool)  
96,920 sq ft—space cooling
- **Family Villa**  
Motor City, Dubai, UAE  
Emirates District Cooling (Emicool)  
236,775 sq ft—space cooling



Family Villa

- **Fox Hill 1**  
Motor City, Dubai, UAE  
Emirates District Cooling (Emicool)  
83,798 sq ft—space cooling



Fox Hill

- **Fox Hill 2**  
Motor City, Dubai, UAE  
Emirates District Cooling (Emicool)  
85,575 sq ft—space cooling
- **Fox Hill 3**  
Motor City, Dubai, UAE  
Emirates District Cooling (Emicool)  
78,789 sq ft—space cooling
- **Fox Hill 4**  
Motor City, Dubai, UAE  
Emirates District Cooling (Emicool)  
72,085 sq ft—space cooling
- **Fox Hill 7**  
Motor City, Dubai, UAE  
Emirates District Cooling (Emicool)  
80,360 sq ft—space cooling
- **Fox Hill 8**  
Motor City, Dubai, UAE  
Emirates District Cooling (Emicool)  
67,252 sq ft—space cooling
- **Fox Hill 9**  
Motor City, Dubai, UAE  
Emirates District Cooling (Emicool)  
85,508 sq ft—space cooling
- **Luxury Villa**  
Motor City, Dubai, UAE  
Emirates District Cooling (Emicool)  
36,419 sq ft—space cooling



Luxury Villa

- **Marlowe House 1**  
Motor City, Dubai, UAE  
Emirates District Cooling (Emicool)  
57,738 sq ft—space cooling

## Residential cont.

- **Marlowe House 2**  
Motor City, Dubai, UAE  
Emirates District Cooling  
(Emicool)  
58,725 sq ft—space cooling



Marlowe House 2

- **Norton Court 1**  
Motor City, Dubai, UAE  
Emirates District Cooling  
(Emicool)  
80,489 sq ft—space cooling



Norton Court 1

- **Norton Court 2**  
Motor City, Dubai, UAE  
Emirates District Cooling  
(Emicool)  
36,429 sq ft—space cooling

- **Norton Court 3**  
Motor City, Dubai, UAE  
Emirates District Cooling  
(Emicool)  
74,084 sq ft—space cooling

- **Norton Court 4**  
Motor City, Dubai, UAE  
Emirates District Cooling  
(Emicool)  
33,659 sq ft—space cooling

- **Regent House 1**  
Motor City, Dubai, UAE  
Emirates District Cooling  
(Emicool)  
50,367 sq ft—space cooling

- **Regent House 2**  
Motor City, Dubai, UAE  
Emirates District Cooling  
(Emicool)  
49,136 sq ft—space cooling



Regent House 2

- **Shakespeare Circus 1**  
Motor City, Dubai, UAE  
Emirates District Cooling  
(Emicool)  
117,826 sq ft—space cooling

- **Shakespeare Circus 2**  
Motor City, Dubai, UAE  
Emirates District Cooling  
(Emicool)  
125,748 sq ft—space cooling



Shakespeare Circus 2

- **Shakespeare Circus 3**  
Motor City, Dubai, UAE  
Emirates District Cooling  
(Emicool)  
125,748 sq ft—space cooling

- **Sherlock Circus 1**  
Motor City, Dubai, UAE  
Emirates District Cooling  
(Emicool)  
52,876 sq ft—space cooling

- **Sherlock Circus 2**  
Motor City, Dubai, UAE  
Emirates District Cooling  
(Emicool)  
66,111 sq ft—space cooling

- **Sherlock Circus 3**  
Motor City, Dubai, UAE  
Emirates District Cooling  
(Emicool)  
57,841 sq ft—space cooling

- **Sherlock House 1**  
Motor City, Dubai, UAE  
Emirates District Cooling  
(Emicool)  
139,399 sq ft—space cooling

- **Sherlock House 2**  
Motor City, Dubai, UAE  
Emirates District Cooling  
(Emicool)  
139,208 sq ft—space cooling



Sherlock House 2

- **Terraced Apartment 1**  
Motor City, Dubai, UAE  
Emirates District Cooling  
(Emicool)  
166,675 sq ft—space cooling  
Emicool Terraced Apartments

- **Terraced Apartment 2**  
Motor City, Dubai, UAE  
Emirates District Cooling  
(Emicool)  
150,937 sq ft—space cooling

- **Terraced Apartment 3**  
Motor City, Dubai, UAE  
Emirates District Cooling  
(Emicool)  
170,006 sq ft—space cooling

- **Terraced Apartment 4**  
Motor City, Dubai, UAE  
Emirates District Cooling  
(Emicool)  
159,164 sq ft—space cooling

- **Townhouses**  
Motor City, Dubai, UAE  
Emirates District Cooling  
(Emicool)  
670,380 sq ft—space cooling

- **Widcombe House 1**  
Motor City, Dubai, UAE  
Emirates District Cooling  
(Emicool)  
49,423 sq ft—space cooling

- **Widcombe House 2**  
Motor City, Dubai, UAE  
Emirates District Cooling  
(Emicool)  
62,262 sq ft—space cooling

- **Widcombe House 3**  
Motor City, Dubai, UAE  
Emirates District Cooling  
(Emicool)  
49,601 sq ft—space cooling

- **Widcombe House 4**  
Motor City, Dubai, UAE  
Emirates District Cooling  
(Emicool)  
71,429 sq ft—space cooling

- **Windsor Crescent**  
Motor City, Dubai, UAE  
Emirates District Cooling  
(Emicool)  
256,423 sq ft—space cooling  
Emicool Windsor Crescent

- **Elite 2**  
Sports City, Dubai, UAE  
Emirates District Cooling  
(Emicool)  
118,978 sq ft—space cooling



Elite 2

- **Elite 3**  
Sports City, Dubai, UAE  
Emirates District Cooling  
(Emicool)  
127,451 sq ft—space cooling

- **Elite 4**  
Sports City, Dubai, UAE  
Emirates District Cooling  
(Emicool)  
120,633 sq ft—space cooling

- **Elite 6**  
Sports City, Dubai, UAE  
Emirates District Cooling  
(Emicool)  
156,453 sq ft—space cooling



## Residential cont.

- **Mediterranean**  
Sports City, Dubai, UAE  
Emirates District Cooling (Emicool)  
174,833 sq ft—space cooling

- **Bungalow**  
Dubai Investment Park, Dubai, UAE  
Emirates District Cooling (Emicool)  
168,000 sq ft—space cooling

- **North West**  
Dubai Investment Park, Dubai, UAE  
Emirates District Cooling (Emicool)  
11,916 sq ft—space cooling



North West Apartment

- **Family Villa**  
Dubai Investment Park, Dubai, UAE  
Emirates District Cooling (Emicool)  
985,300 sq ft—space cooling

- **Ritaj B**  
Dubai Investment Park, Dubai, UAE  
Emirates District Cooling (Emicool)  
23,099 sq ft—space cooling

- **South West Apt 1**  
Dubai Investment Park, Dubai, UAE  
Emirates District Cooling (Emicool)  
14,980 sq ft—space cooling

- **South West Apt 2**  
Dubai Investment Park, Dubai, UAE  
Emirates District Cooling (Emicool)  
14,806 sq ft—space cooling

- **South West Apt 3**  
Dubai Investment Park, Dubai, UAE  
Emirates District Cooling (Emicool)  
15,959 sq ft—space cooling

- **Terrace Apartment**  
Dubai Investment Park, Dubai, UAE  
Emirates District Cooling (Emicool)  
218,100 sq ft—space cooling

- **Themaar**  
Dubai Investment Park, Dubai, UAE  
Emirates District Cooling (Emicool)  
43,546 sq ft—space cooling

- **Union Residence A**  
Dubai Investment Park, Dubai, UAE  
Emirates District Cooling (Emicool)  
67,520 sq ft—space cooling

- **Union Residence B**  
Dubai Investment Park, Dubai, UAE  
Emirates District Cooling (Emicool)  
61,186 sq ft—space cooling

- **Palm Jumeirah Crescent**  
Dubai, UAE  
Emirates Central Cooling Systems Corporation (Empower)  
2,689,614 sq ft—space cooling

- **LPW-34-37**  
Doha, Qatar  
Qatar Cool  
34,552 sq ft—space cooling

- **LPVC-13**  
Doha, Qatar  
Qatar Cool  
8,730 sq ft—space cooling

- **LPVC-26**  
Doha, Qatar  
Qatar Cool  
10,204 sq ft—space cooling

- **LPVC-27**  
Doha, Qatar  
Qatar Cool  
5,221 sq ft—space cooling

- **LPVC-28**  
Doha, Qatar  
Qatar Cool  
5,597 sq ft—space cooling

- **LPVC-47**  
Doha, Qatar  
Qatar Cool  
7,276 sq ft—space cooling

- **LPVC-48**  
Doha, Qatar  
Qatar Cool  
7,533 sq ft—space cooling

- **LPVE-04**  
Doha, Qatar  
Qatar Cool  
7,535 sq ft—space cooling

- **LPVE-05**  
Doha, Qatar  
Qatar Cool  
6,652 sq ft—space cooling

- **LPVE-09**  
Doha, Qatar  
Qatar Cool  
5,134 sq ft—space cooling

- **LPVE-35**  
Doha, Qatar  
Qatar Cool  
9,192 sq ft—space cooling

- **LPVE-43**  
Doha, Qatar  
Qatar Cool  
9,946 sq ft—space cooling

- **BVS-42**  
Doha, Qatar  
Qatar Cool  
10,129 sq ft—space cooling

- **BVS-55**  
Doha, Qatar  
Qatar Cool  
9,591 sq ft—space cooling

- **BVN-38**  
Doha, Qatar  
Qatar Cool  
9,311 sq ft—space cooling



BVN-38

- **Fanar Fayrouz-10**  
Doha, Qatar  
Qatar Cool  
7,535 sq ft—space cooling

- **Parcel-11B**  
Doha, Qatar  
Qatar Cool  
245,861 sq ft—space cooling

- **Parcel-13A**  
Doha, Qatar  
Qatar Cool  
450,796 sq ft—space cooling

- **Parcel-13B**  
Doha, Qatar  
Qatar Cool  
450,796 sq ft—space cooling

- **Viva Bahriya - 09**  
Doha, Qatar  
Qatar Cool  
317,904 sq ft—space cooling

- **LPE-44**  
Doha, Qatar  
Qatar Cool  
14,058 sq ft—space cooling



LPE

- **BVN-08**  
Doha, Qatar  
Qatar Cool  
11,840 sq ft—space cooling

- **BVN-35**  
Doha, Qatar  
Qatar Cool  
10,624 sq ft—space cooling

- **BVN-46**  
Doha, Qatar  
Qatar Cool  
6,781 sq ft—space cooling

- **BVN-52**  
Doha, Qatar  
Qatar Cool  
4,639 sq ft—space cooling

- **BVS-48**  
Doha, Qatar  
Qatar Cool  
7,459 sq ft—space cooling

- **BVS-59-68**  
Doha, Qatar  
Qatar Cool  
60,558 sq ft—space cooling
- **Towers 3, 4, 5, 6. Plots C3-C6 West 35 Khalidiya**  
Abu Dhabi, UAE  
Tabreed  
1,307,751 sq ft—space cooling
- **Towers 1 & 2. Plots C1-C2 West 35 Khalidiya**  
Abu Dhabi, UAE  
Tabreed  
431,525 sq ft—space cooling



West 35 Khalidiya

- **Commercial & Residential Building – Pvt Office H.E. Sh. Mabarak M. Al Nahyan**  
Abu Dhabi, UAE  
Tabreed  
393,636 sq ft—space cooling
- **Bassam Said Freiha-Spinneys**  
Abu Dhabi, UAE  
Tabreed  
231,919 sq ft—space cooling

## School, Hospital, Institution

- **Dubiotech EKI Propco SPV 1 Limited – Foremarke School**  
Dubai, UAE  
Emirates Central Cooling Systems Corporation (Empower)  
232,490 sq ft—space cooling



Foremarke School

- **Parcel-03A**  
Doha, Qatar  
Qatar Cool  
365,976 sq ft—space cooling
- **Parcel-03B**  
Doha, Qatar  
Qatar Cool  
371,358 sq ft—space cooling
- **Parcel-07A**  
Doha, Qatar  
Qatar Cool  
323,361 sq ft—space cooling
- **Parcel-08A**  
Doha, Qatar  
Qatar Cool  
423,714 sq ft—space cooling

- **Parcel-09A**  
Doha, Qatar  
Qatar Cool  
245,861 sq ft—space cooling
- **Viva Bahriya - 22**  
Doha, Qatar  
Qatar Cool  
269,100 sq ft—space cooling
- **Viva Bahriya - 23**  
Doha, Qatar  
Qatar Cool  
269,100 sq ft—space cooling



Viva Bahriya-23

## Other

- **Reverse Osmosis Plant**  
Doha, Qatar  
Qatar Cool  
91,677 sq ft—space cooling  
Qatar Cool Reverse Osmosis Plant

- **Back Up Data Center**  
Doha, Qatar  
Qatar Cool  
3,251 sq ft—space cooling
- **Dubiotech Laboratory Building – PT-13B**  
Dubai, UAE  
Emirates Central Cooling Systems Corporation (Empower)  
354,860 sq ft—space cooling



Dubiotech Laboratory Building





## Plan to submit your data for 2014

Make plans now to photograph and enter your customer buildings that commit or recommit for your district energy service during 2014! The deadline for submittal is **Fri., April 17, 2015.**

To enter your newly committed, recommitted or connected customers for 2014, please download and complete the Excel® template found at

**<http://www.districtenergy.org/assets/Forms/2014DESpaceblankform.xls>**

Please use the form exactly as provided and fill in all appropriate cells to facilitate our compilation of the data. Submit the final document (list all buildings within one document) to Len Phillips at **[len.idea@districtenergy.org](mailto:len.idea@districtenergy.org)**. Be sure to send as many building photographs as possible, and label them clearly with your company name and identifying title such as : "My Energy Company-Smith Office Building". Thank you.

To access past issues of *District Energy Space*, visit

**<http://www.districtenergy.org/district-energy-space>**



24 Lyman Street, Suite 230  
Westborough, MA 01581 USA  
Tel: +1 508-366-9339  
Fax +1 508-366-0019  
[www.districtenergy.org](http://www.districtenergy.org)

Copyright ©2014 International District Energy Association . ALL RIGHTS RESERVED. This publication contains proprietary content of International District Energy Association (IDEA) which is protected by copyright, trademark and other intellectual property rights. No part of this publication or any "Information" (as defined below) contained herein may be reproduced (by photocopying or otherwise), transmitted, stored (in a database, retrieval system, or otherwise), or otherwise used through any means without the express prior written permission of IDEA. "Information" means any and all information, data, specific products, services, processes, procedures, designs, techniques, technical data, editorial material, advice, instructions, opinions or any other content appearing or referenced in this publication. IDEA has prepared this publication for informational purposes only. IDEA has exercised reasonable care in producing the Information contained in this publication. The appearance of any Information in this publication does not constitute endorsement, warranty or guaranty by IDEA of any product, service, process, procedure, design or the like. IDEA does not make any representation or warranties about the suitability or accuracy of the Information in this publication or that the Information in this publication is error-free. All Information presented in this work is provided "as is" without warranty of any kind. IDEA disclaims all warranties and conditions of any kind, express or implied, including all implied warranties and conditions of merchantability, fitness for a particular purpose, title and non-infringement. The Information contained in this publication may be superseded, may contain errors, and/or may include inaccuracies. IDEA shall not be liable for any special, indirect, incidental, consequential or any damages whatsoever resulting from inconvenience, or loss of use, resources, or profits, whether in an action of contract, negligence or other tortious action, arising out of or in connection with the use or performance of any of the Information available in this publication even if IDEA has been advised of the possibility of such damages or losses. IDEA invites comments, criticisms and suggestions regarding the subject matter in this publication, including notice of errors or omissions.