

# **Consolidated Edison Company of New York**

## **SMART Robot**

Presented by:

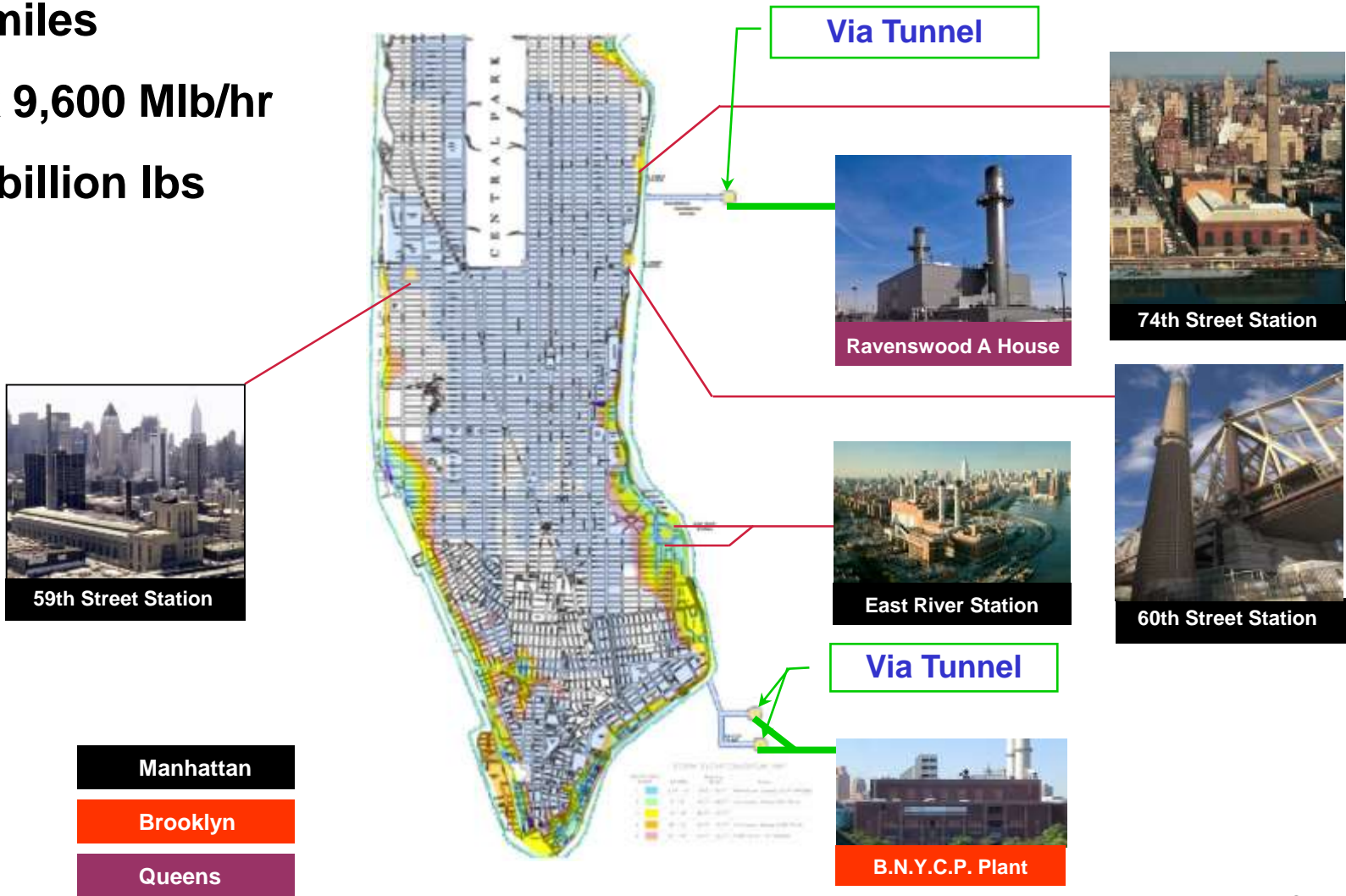
Dowlatram Somrah, ME, PE

# Agenda

- **Con Edison Steam System Overview**
- **Design and Integrity of System**
- **Steam Leaks and Repairs**
- **SMART Robot Design**
- **Field Application**
- **Benefits**

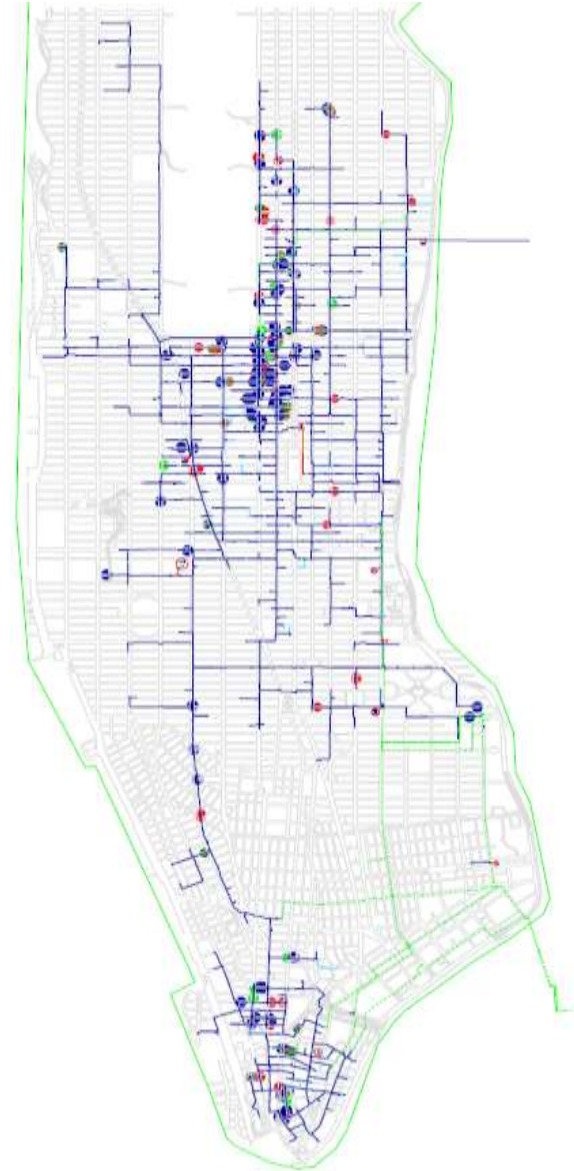
# Con Edison Steam System Overview

- 106 miles
- Peak 9,600 Mlb/hr
- 23.2 billion lbs



# Design and Integrity of System

- Design basis
  - Pressures: 200 psig, 400 psig
  - 1" – 36" diameter pipes
  - 0.179 inch to 0.675 inch wall thickness
- In-service conditions
  - No external corrosion
  - Flange Leaks
  - Flow accelerated corrosion
- Leaks impact reliability
  - Repair within 6 months
  - Main isolation
  - Safety concerns, loss of product



# Finding and Repairing Leaks

- Challenges finding leaks
  - Subsurface, conduits
- Finding steam leaks
  - History/design/pinpointing leaks
- 65 leaks require an excavation



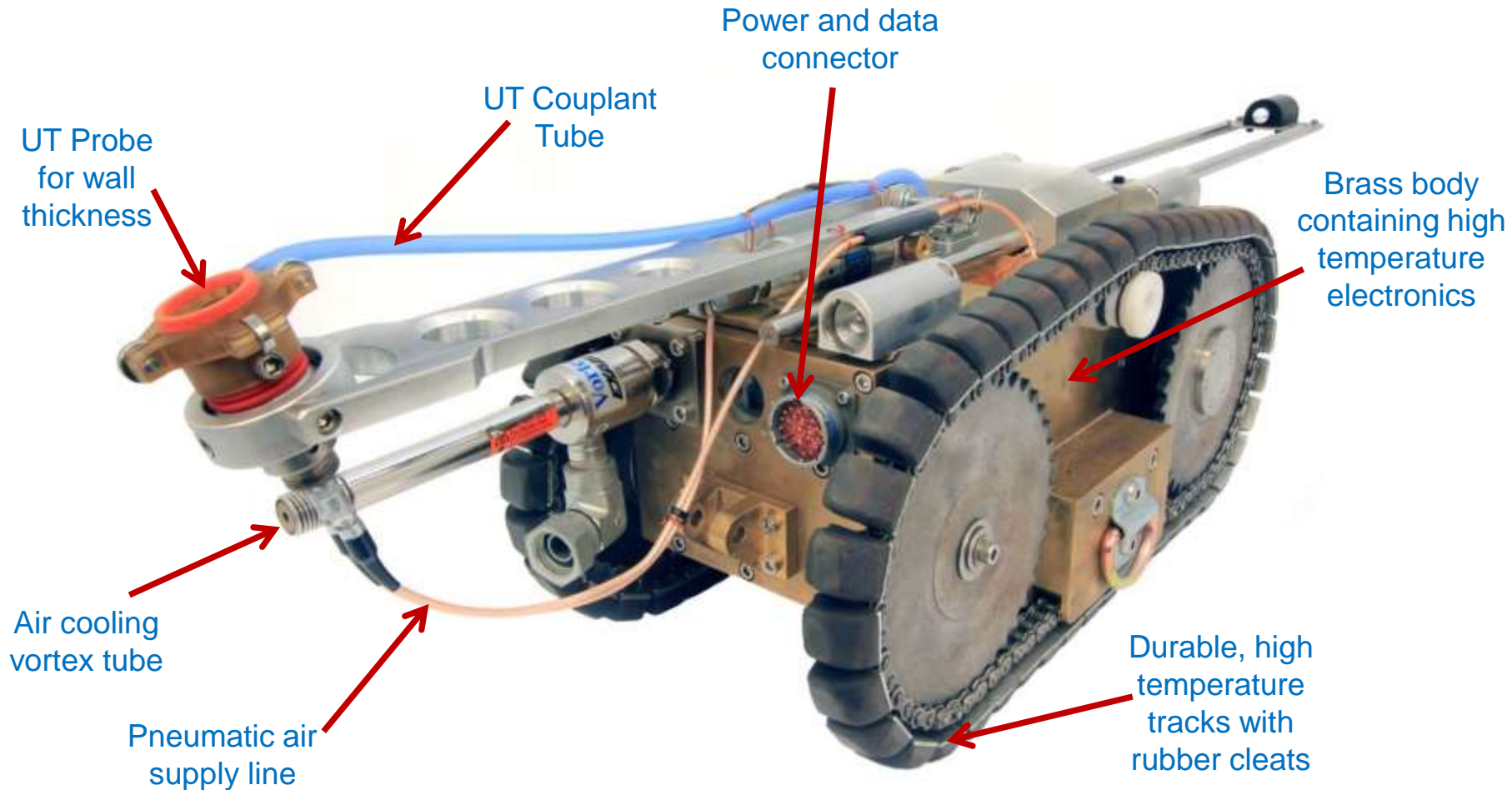
# SMART Robot – Smart Maintenance

- Assess 8”- 24” diameter pipes
- Maneuver up to 30° bends
- Withstand 350° F, 100% humidity
- Inspect 500 feet length in 4 hrs
- Record distance and elevation
- Measure wall thickness & ovality
- Quantify internal corrosion
- Record video of inspection



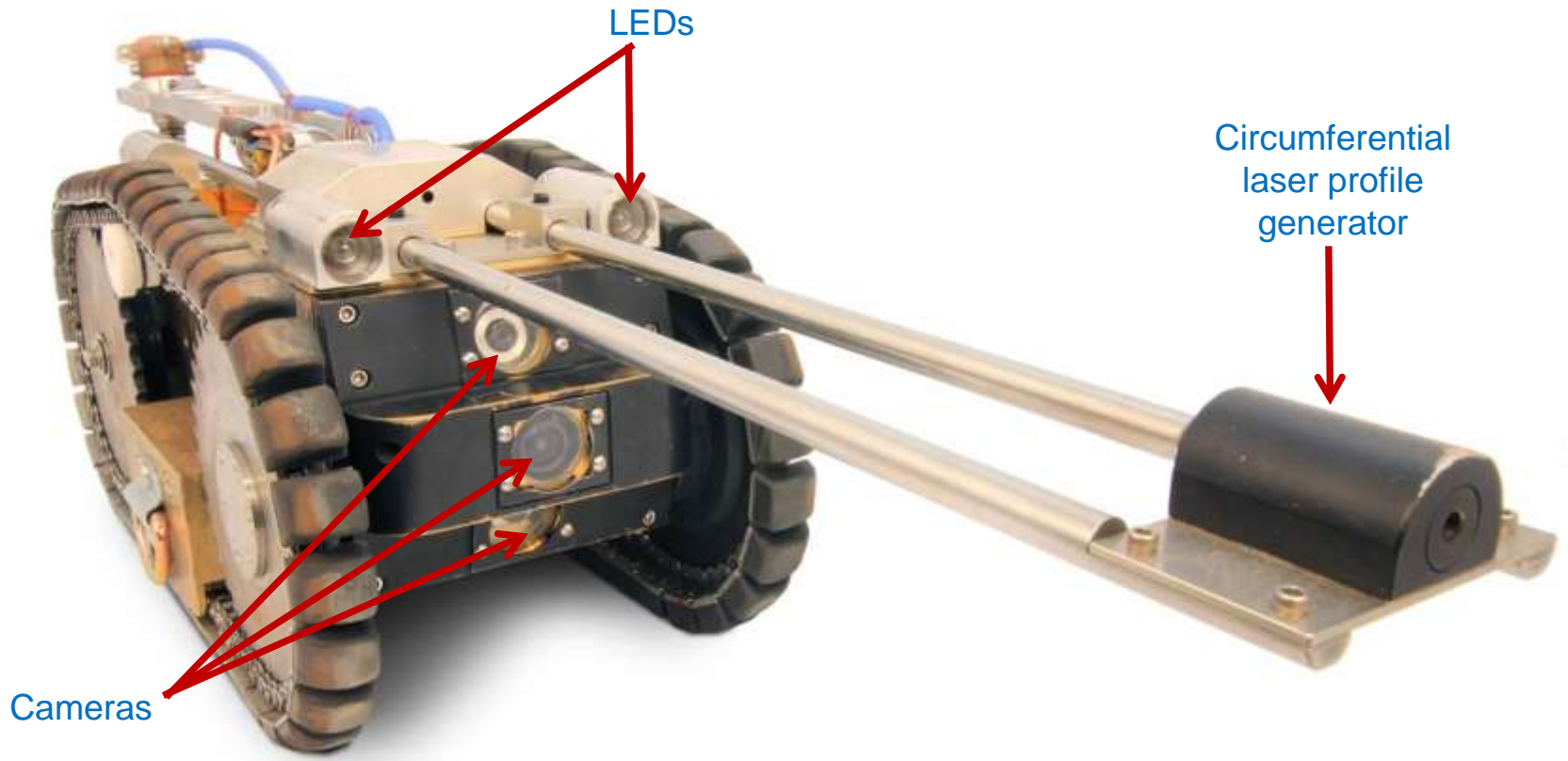
# SMART Robot Design

## Rear View



# SMART Robot Design

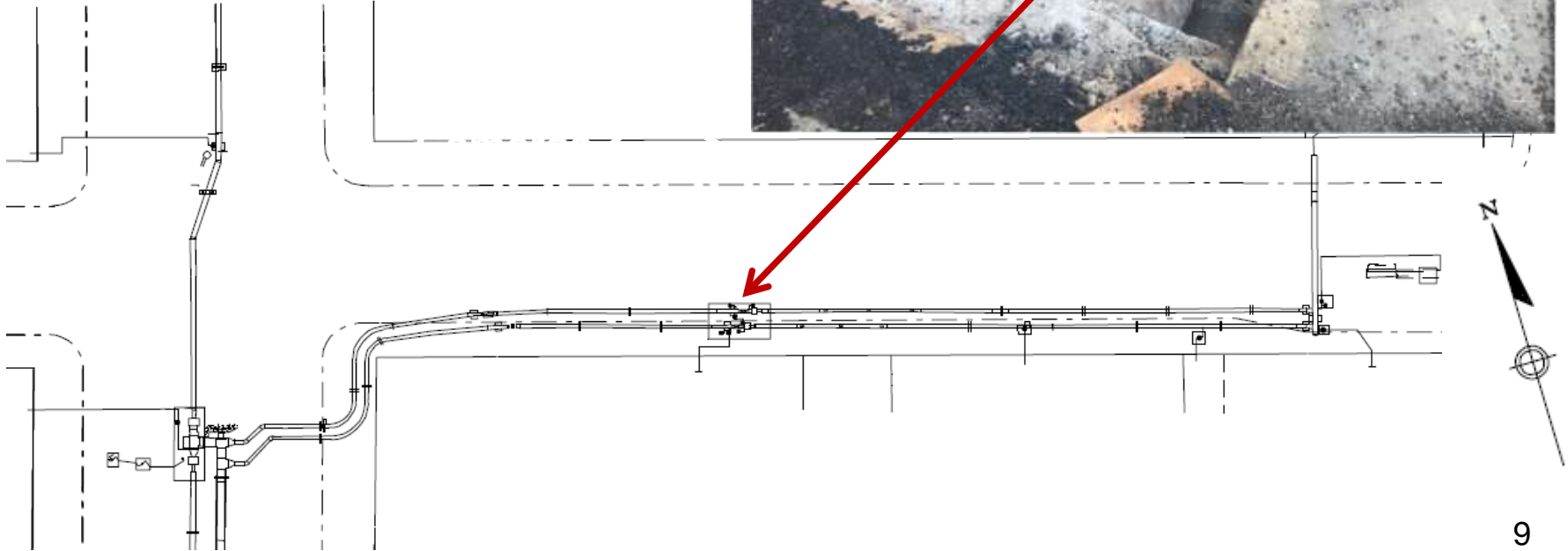
## Front View





# Field Application

- 16" diameter main
  - Installed 1924
- Inspected 250 feet
  - 150 feet east
  - 100 feet west

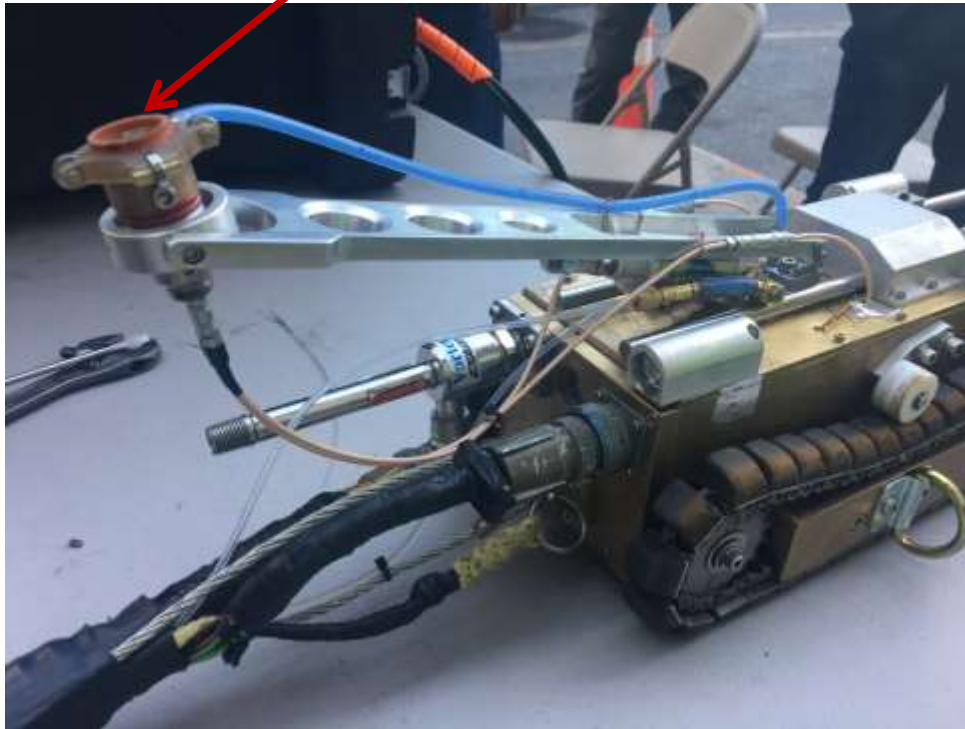


# Deploying The SMART Robot



# Wall Thickness Measurement

UT Probe



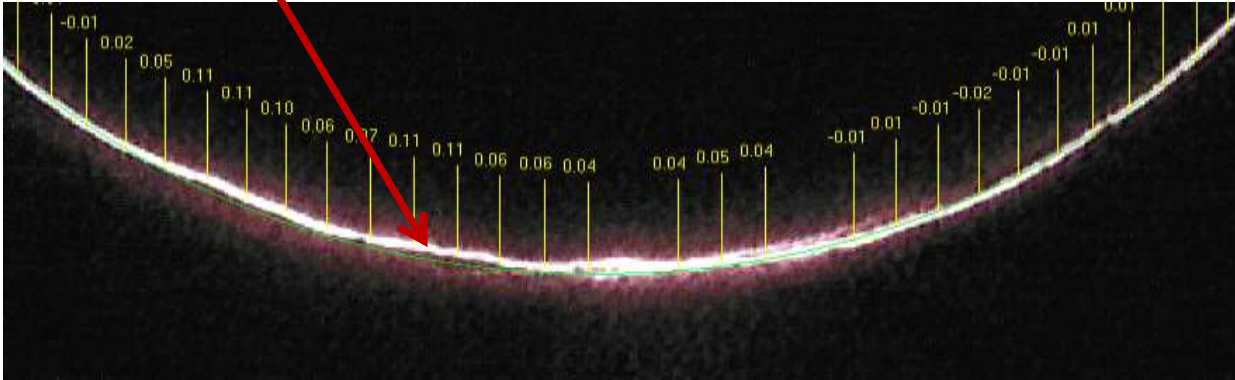
# Field Application - Video



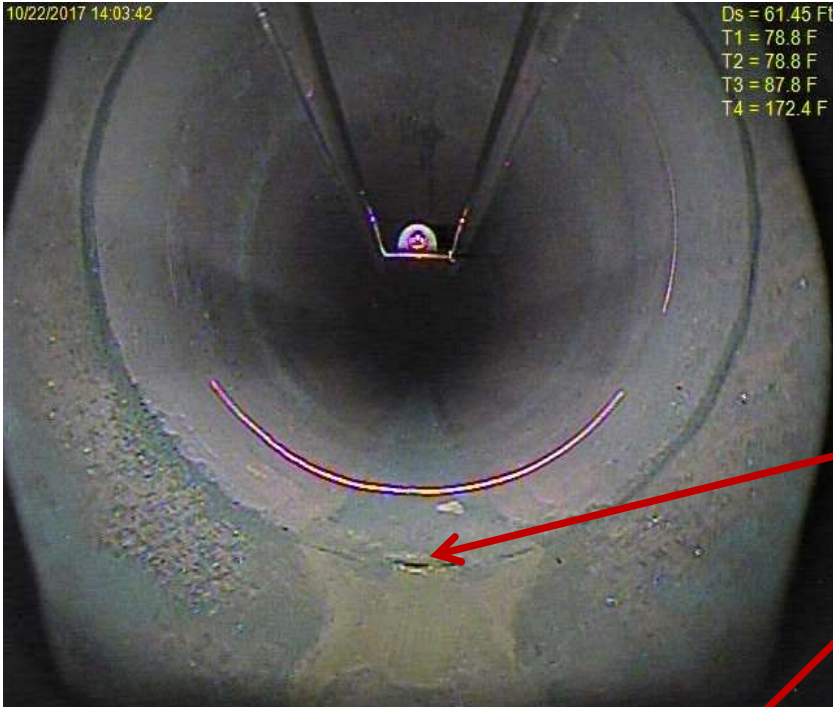
# Field Application - Findings



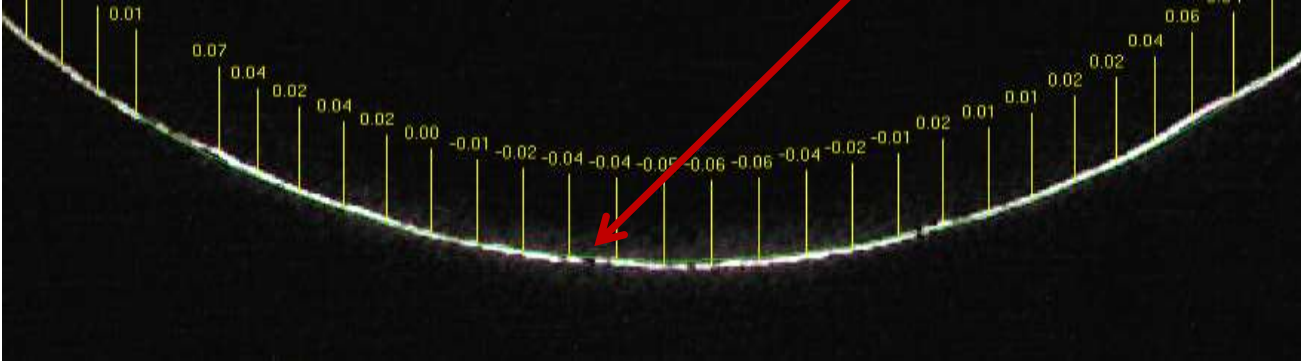
Circumferential Weld  
- Fully Penetrated



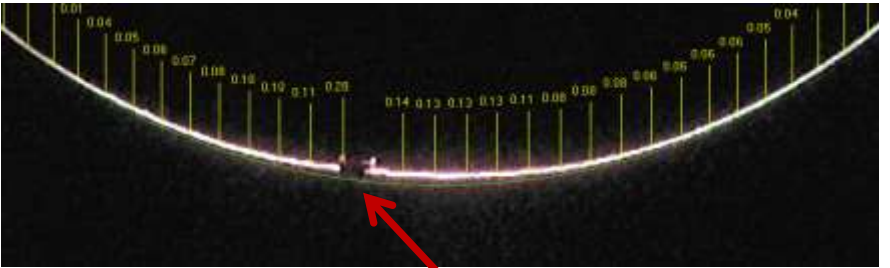
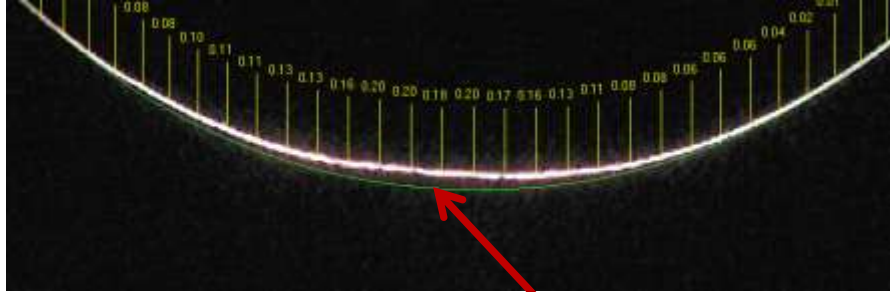
# Field Application - Findings



Circumferential Weld  
- Lack of Penetration



# Field Application - Findings



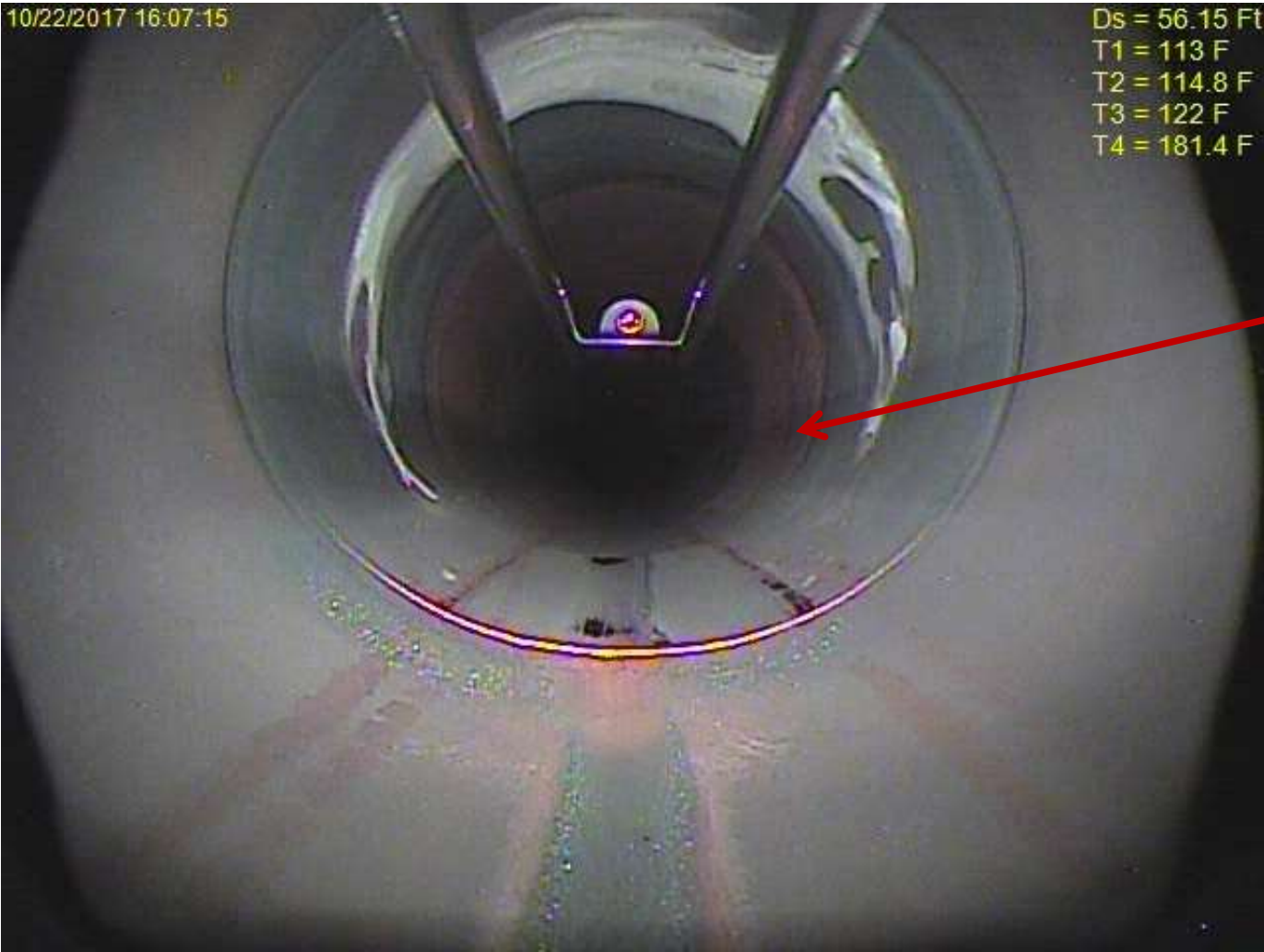
# Field Application - Findings



Cap - End of Pipe

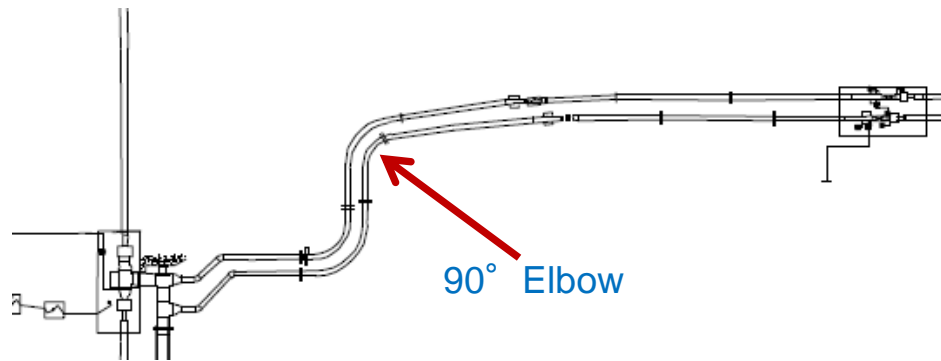
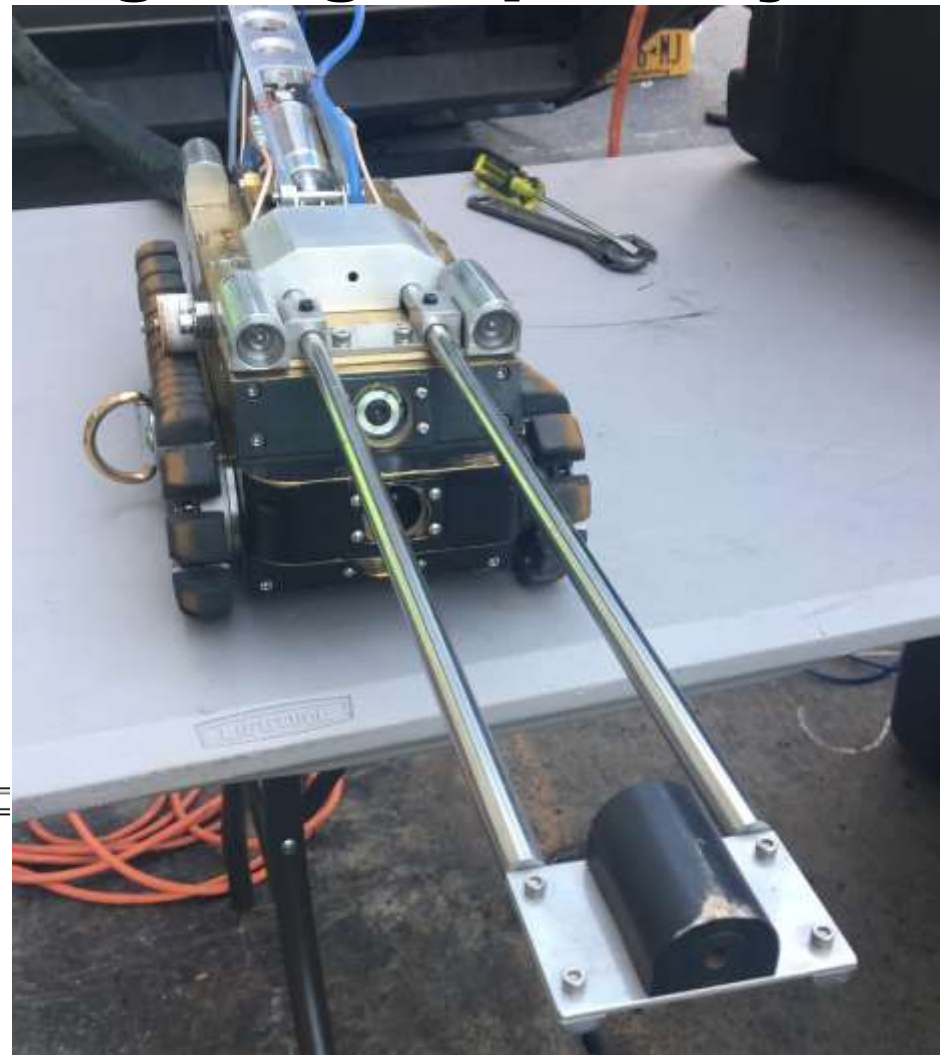


# Field Application - Findings



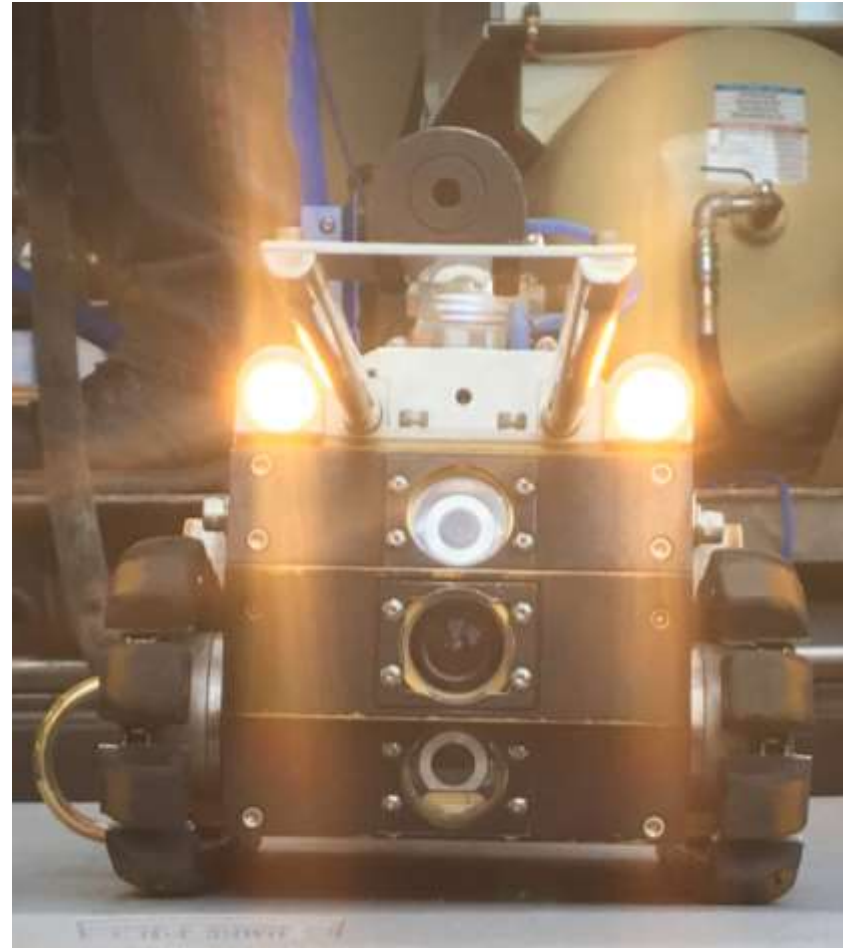
# Field Application – Navigating Capability

| Pipe Diameter | Max Sweep Angle |
|---------------|-----------------|
| 8"            | Straight Pipe   |
| 10"           | 7°              |
| 12"           | 15°             |
| 16"           | 20°             |
| 20"           | 25°             |
| 24"           | 30°             |



# Benefits of Using SMART Robot

- Automated reporting
- Mapping of pipe features
- Pipe integrity assessments
- Real recorded pipe data
  - Input into failure models
  - Post failure analysis
- Improved safety, efficiency and reliability



# **Consolidated Edison Company of New York**

## **SMART Robot**

Presented by:

Dowlatram Somrah, ME, PE