

The background of the image features the Maryland state flag, which has a yellow and black checkered canton and a red and white field with a large red cross. In the background, the white dome of a building, likely the Maryland State House, is visible against a blue sky with some clouds. The text is overlaid on the flag.

Maryland Energy Administration

*Driving Innovation through State
Energy Programs*



"I'll be happy to give you innovative thinking. What are the guidelines?"



Maryland
Energy
Administration

A close-up photograph of two hands shaking in a firm grip. The hand on the left is wearing a brown sweater, and the hand on the right is wearing a dark suit jacket. The background is a blurred desk with papers and a pen. The text "What if Government was an active and helpful partner in innovation?" is overlaid in white, bold, sans-serif font.

**What if Government
was an active and
helpful partner in
innovation?**

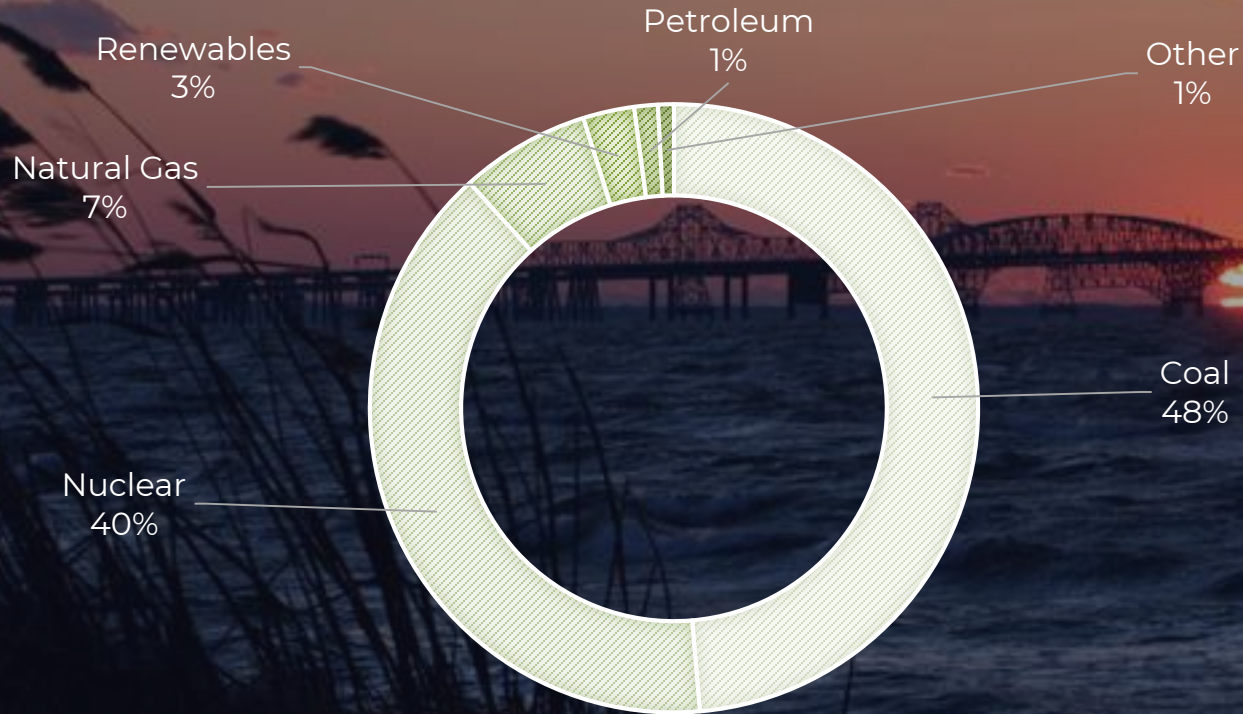


A SMALL AGENCY WITH A LARGE MISSION:

**to promote affordable, reliable, cleaner
energy for the benefit of all Marylanders.**

+ 30 Active Energy Grant and Loan Programs
Offering Energy Efficiency and Renewable Energy Grants
Providing guidance for expansion of renewable energy projects
Supporting public and private partnerships

MARYLAND'S ENERGY LANDSCAPE





MARYLAND'S ENERGY LANDSCAPE

40%

Percent of energy generation that is imported



Maryland Industries

What if Government could forge policy and programs that aim to meet future goals of industry?

An aerial photograph of an industrial park. In the foreground, a large building has its roof covered with rows of blue solar panels. To the right, a large white warehouse has 'LOGISTIK CENTER 10' and 'reuter.de' written on its side. The background shows more industrial buildings, parking lots with cars and trucks, and green fields. A road runs along the left side of the image.

Investing in Data Centers

An aerial, slightly blurred photograph of a large industrial port or shipping yard. Numerous yellow gantry cranes are visible, positioned over a vast area filled with colorful shipping containers in shades of blue, red, and white. The scene is set against a backdrop of a body of water and a distant shoreline. The overall color palette is dominated by blues and yellows, with a soft, hazy atmosphere.

Next Generation Manufacturing

EVER CHANGING TECHNOLOGIES

Solar +
EV
Chargers

Micro-
CHP

Storage

What if Government could respond quickly to encourage rapid development and best practices?

Energy Storage



First Energy
Storage Tax Credit
in the Nation



\$75,000 Income
Tax Credit



Program open
until 2022

The background of the slide is a photograph of an industrial facility, likely a power plant or refinery. It features a complex network of large, dark-colored pipes, valves, and structural steel. The lighting is dramatic, with a strong blue tint and some warm, yellowish light sources that create a sense of depth and scale. The overall composition is dynamic, with pipes running diagonally across the frame.

CHP & Fuel Cells

\$3.5 Million
per project

6,000 MW
of Potential

\$73 Million
In new projects

A low-angle, upward-looking shot of a complex industrial system, likely a Micro-CHP (Micro Combined Heat and Power) plant. The image is dominated by large, horizontal, metallic pipes that run across the frame. These pipes are interconnected with various valves, flanges, and smaller vertical pipes. The lighting is dramatic, with a strong blue tint on the right side and a warmer, yellowish light on the left, creating a high-contrast, industrial atmosphere. The perspective makes the pipes appear to converge towards the top of the frame, emphasizing the scale and complexity of the machinery.

Micro-CHP

A photograph of Independence Hall in Philadelphia, a historic building with a prominent clock tower. A large American flag is partially visible in the upper right foreground, and a black lamppost stands to the right. The sky is clear and blue.

Public Private Partnerships

What happens when innovation is driven through teamwork?

Increased Resilience

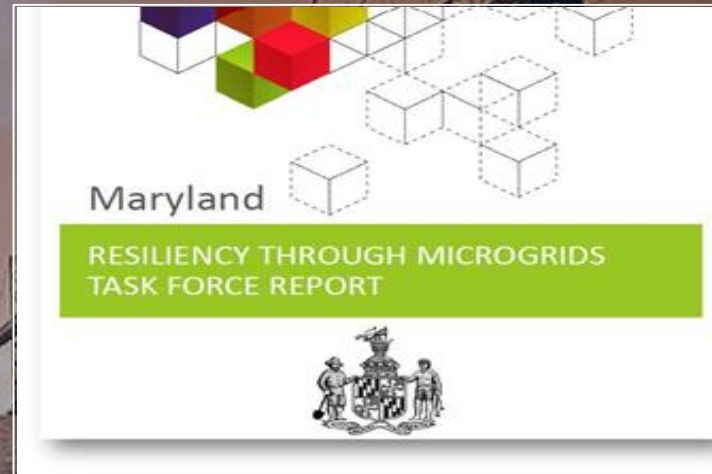


Faster, More Efficient Process



Microgrid Task Force

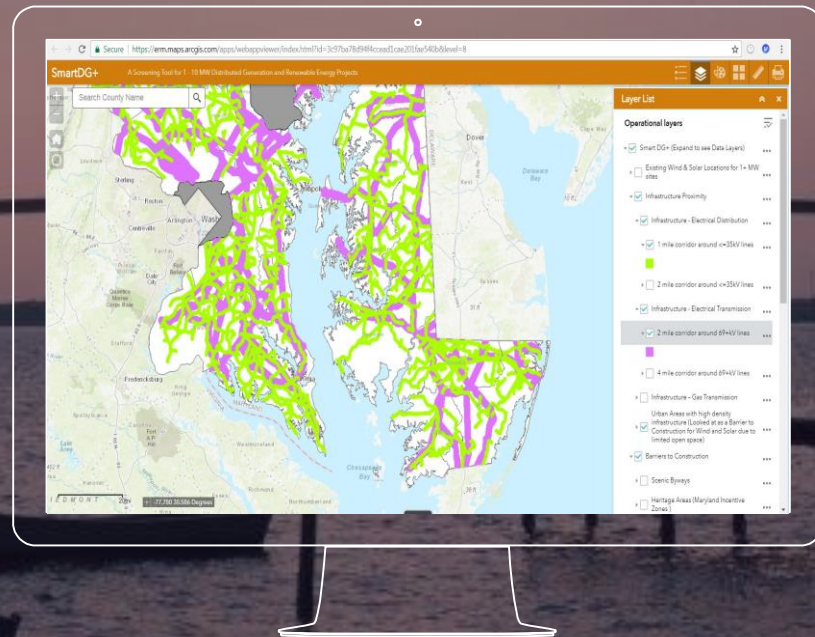
Resiliency Through Microgrids



More information on the Smart DG+ Tool
energy.maryland.gov/Pages/resiliency.aspx

Smart DG+ Tool

Aiding developers to make the best decision when investing in renewable projects in Maryland



More information on the Smart DG+ Tool
pprp.info/SmartDG



Maryland Energy Administration

Rory Spangler | rory.spangler@maryland.gov
Energy.Maryland.gov