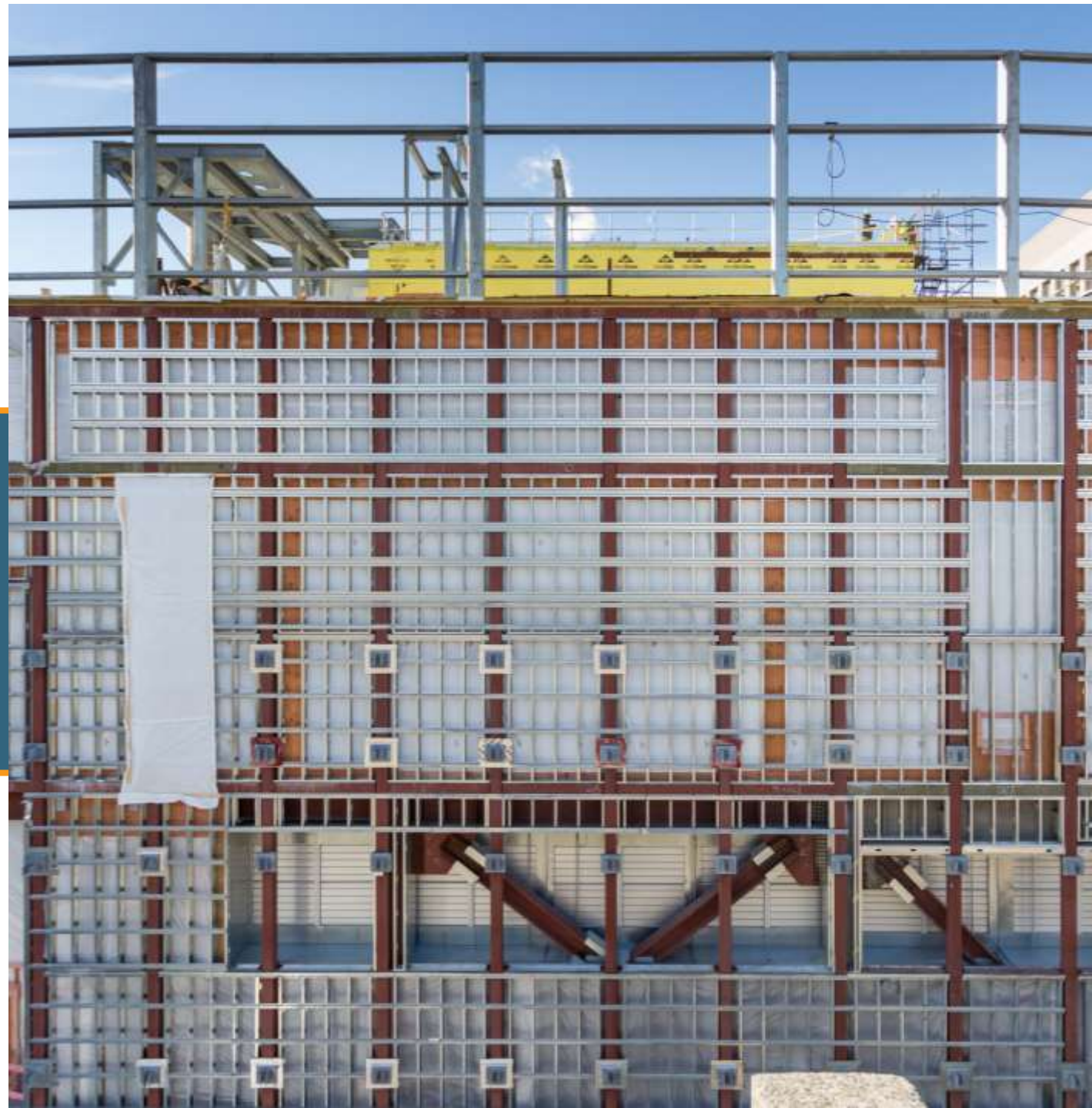




PRESENT

# Form & Function of Large Scale CHP in an Urban Environment







- Team Introductions
- Engineering Considerations
- Architectural Considerations
- Construction Considerations

# TEAM INTRODUCTIONS

VANDERWEIL

ELLENZWEIG

BOND



**MICHAEL W THORNTON**  
Principal  
**VANDERWEIL**



**DOMINICK ROVETO, AIA, LEED AP**  
President  
**ELLENZWEIG**



**JESSE CONKLIN**  
Senior Project Manager  
**BOND**

- Provide resiliency in delivery of utilities during a flood condition of Charles River
- Increase reliability of existing MicroGrid
- Provide support to new science building and campus loads
- Improve efficiency of steam production while reducing operating costs
- Eliminate use of fuel oil except for required code back up
- Reduce greenhouse gas footprint



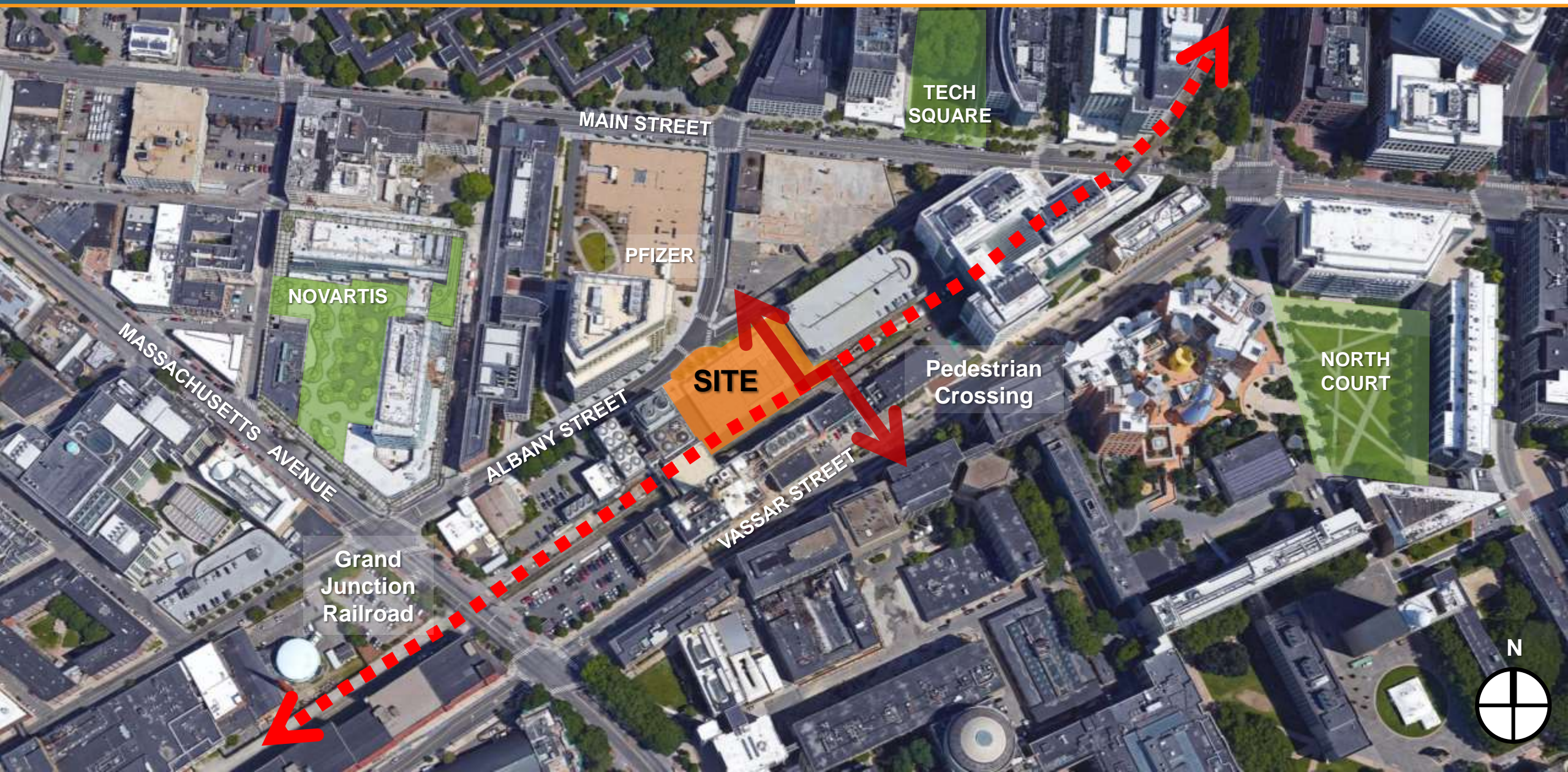
# A: MIT and Community Sensitivities around Site and Building Aesthetics

VANDERWEIL



ELLENZWEIG

BOND





# A: MIT and Community Sensitivities around Site and Building Aesthetics

VANDERWEIL



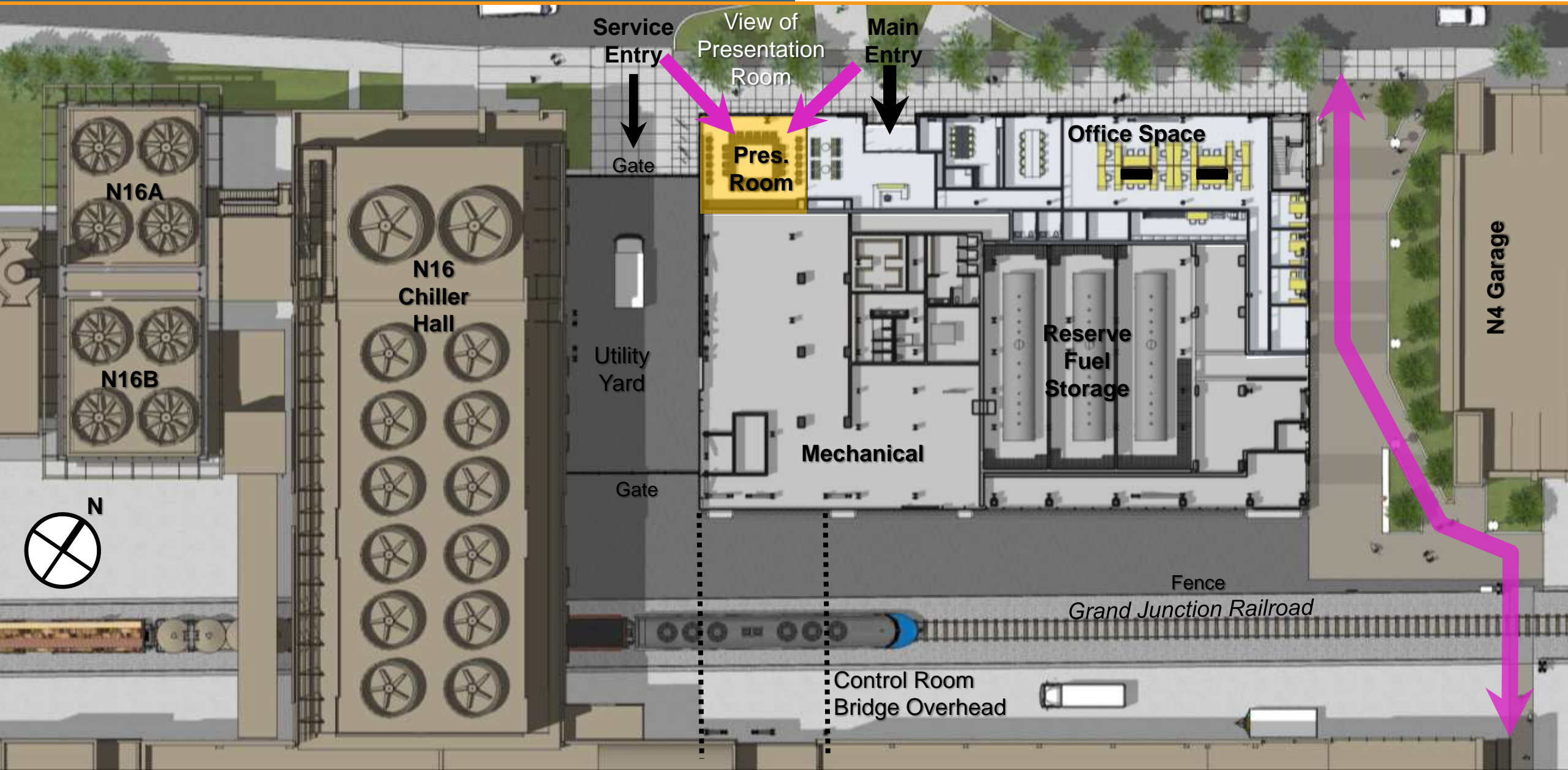
ELLENZWEIG

BOND





B: Architectural Overview  
Plan at Ground Floor (el. 17'-9")





## B: Architectural Overview Outreach

VANDERWEIL



ELLENZWEIG

BOND





## B: Architectural Overview Presentation Room

VANDERWEIL



ELLENZWEIG

BOND





## B: Architectural Overview Office Area

VANDERWEIL



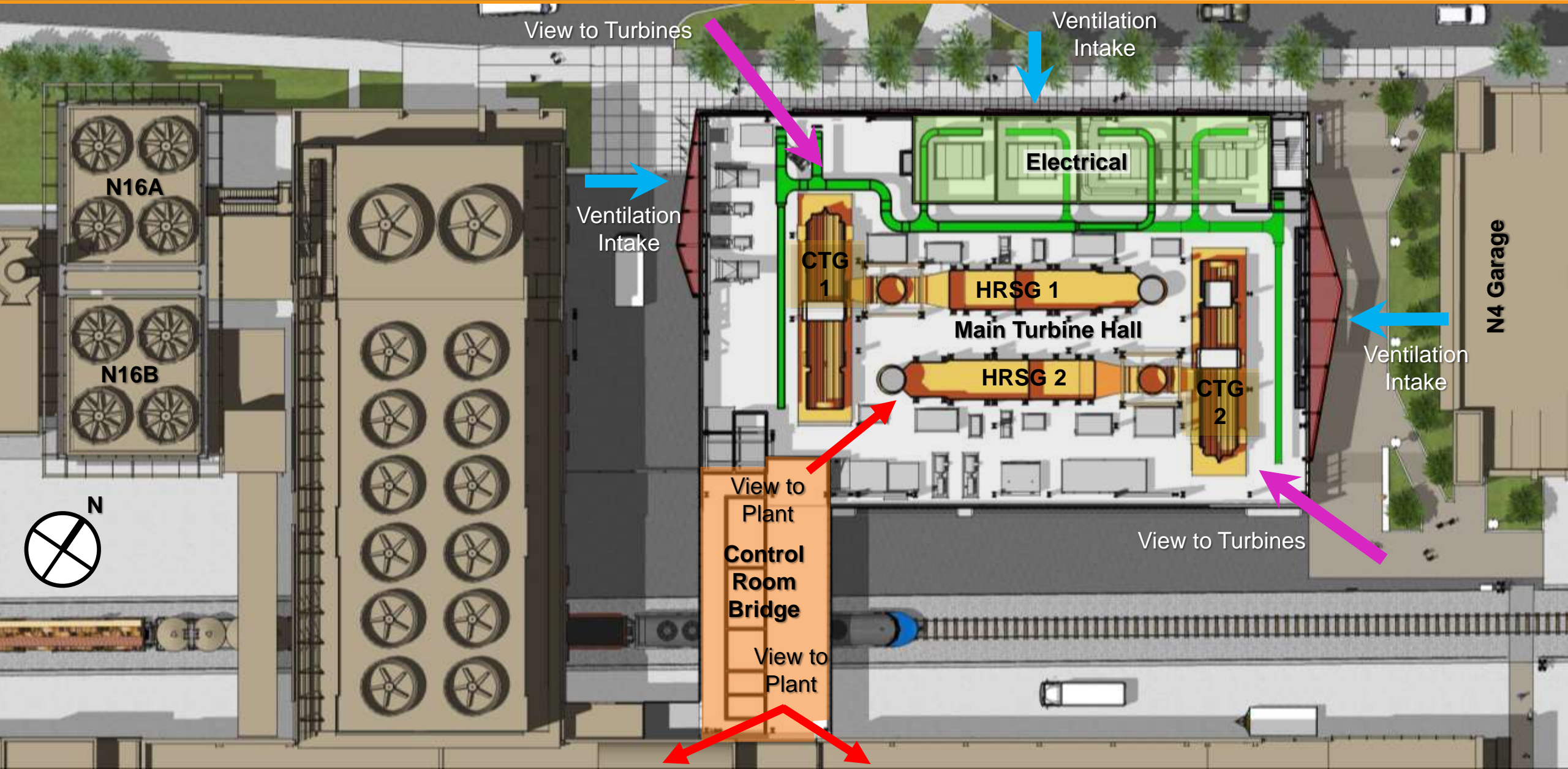
ELLENZWEIG

BOND





B: Architectural Overview  
Plan at Main Turbine Hall (el. 30'-0")





## B: Architectural Overview Building Cross Section

VANDERWEIL



ELLENZWEIG

BOND





## B: Architectural Overview Control Room Bridge

VANDERWEIL



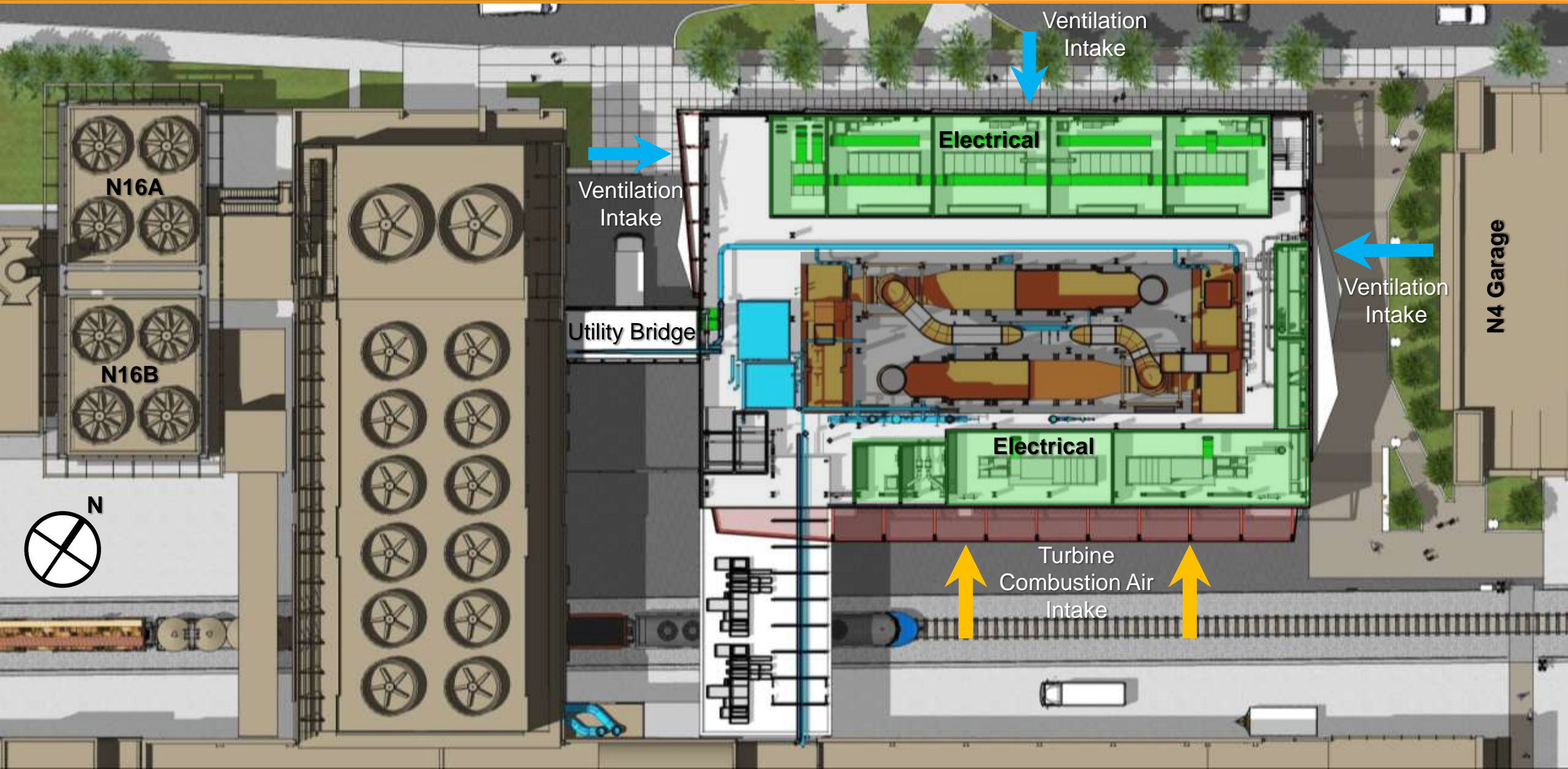
ELLENZWEIG

BOND





B: Architectural Overview  
Plan at Main Electrical Floor (el. 50'-6")





## B: Architectural Overview Building Cross Section

VANDERWEIL



ELLENZWEIG

BOND





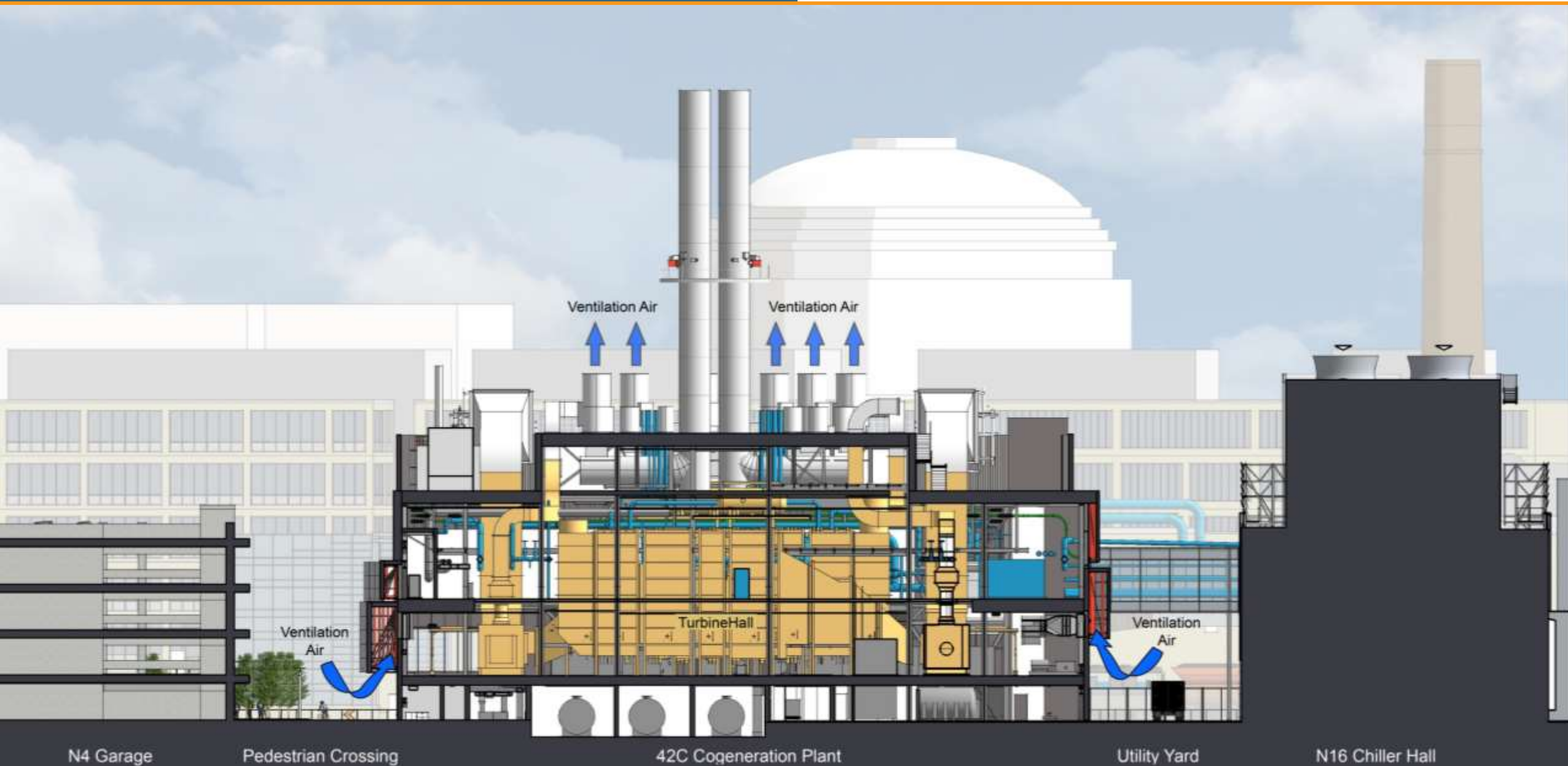
## B: Architectural Overview Building Longitudinal Section

VANDERWEIL



ELLENZWEIG

BOND





## C: Finished Product

VANDERWEIL



ELLENZWEIG

BOND





## C: Finished Product

VANDERWEIL



ELLENZWEIG

BOND





## C: Finished Product

VANDERWEIL



ELLENZWEIG

BOND





## C: Finished Product

VANDERWEIL



ELLENZWEIG

BOND





## C: Finished Product

VANDERWEIL



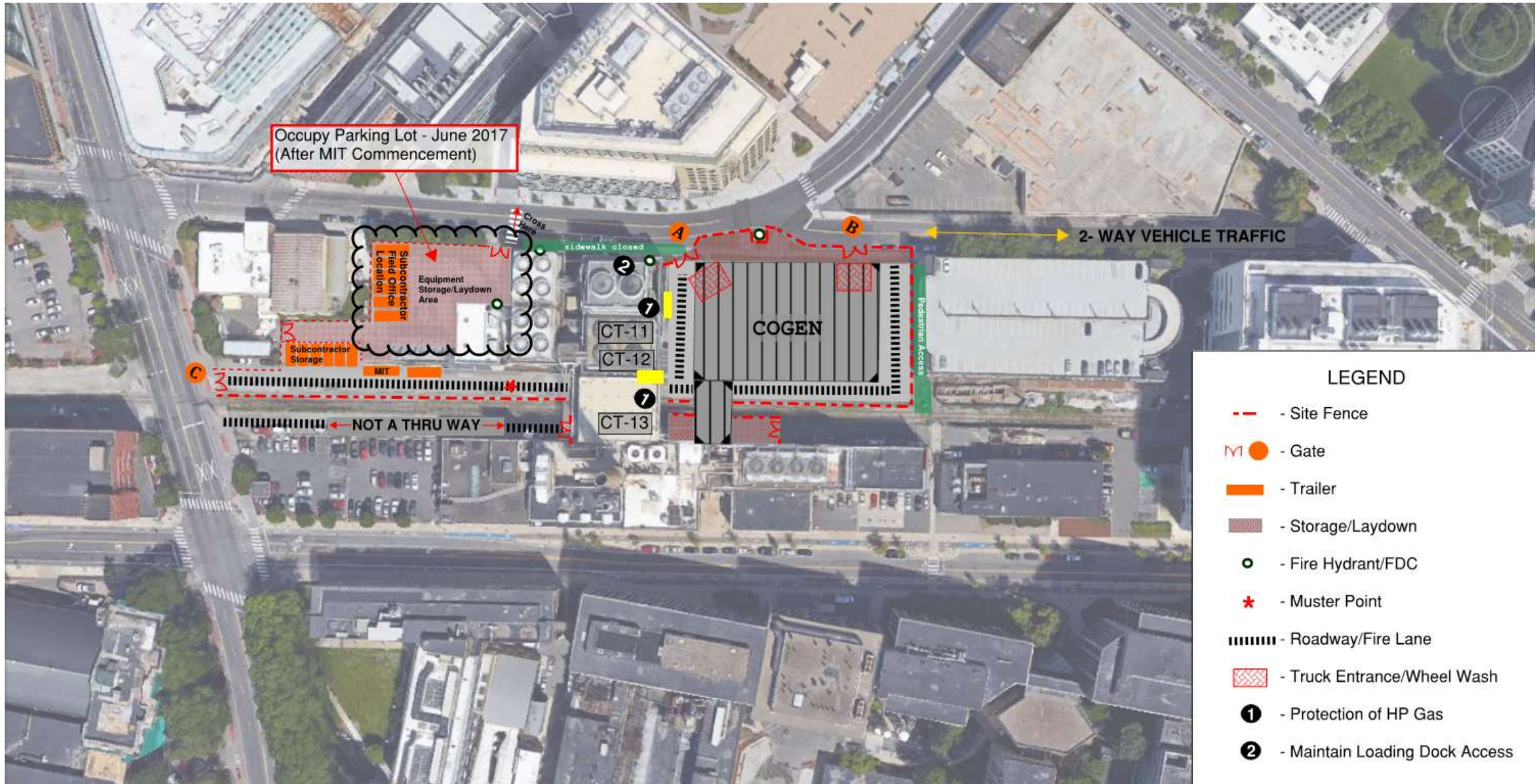
ELLENZWEIG

BOND





# A: Site Challenges





## A: Site Challenges

VANDERWEIL



ELLENZWEIG

BOND





## A: Site Challenges

VANDERWEIL

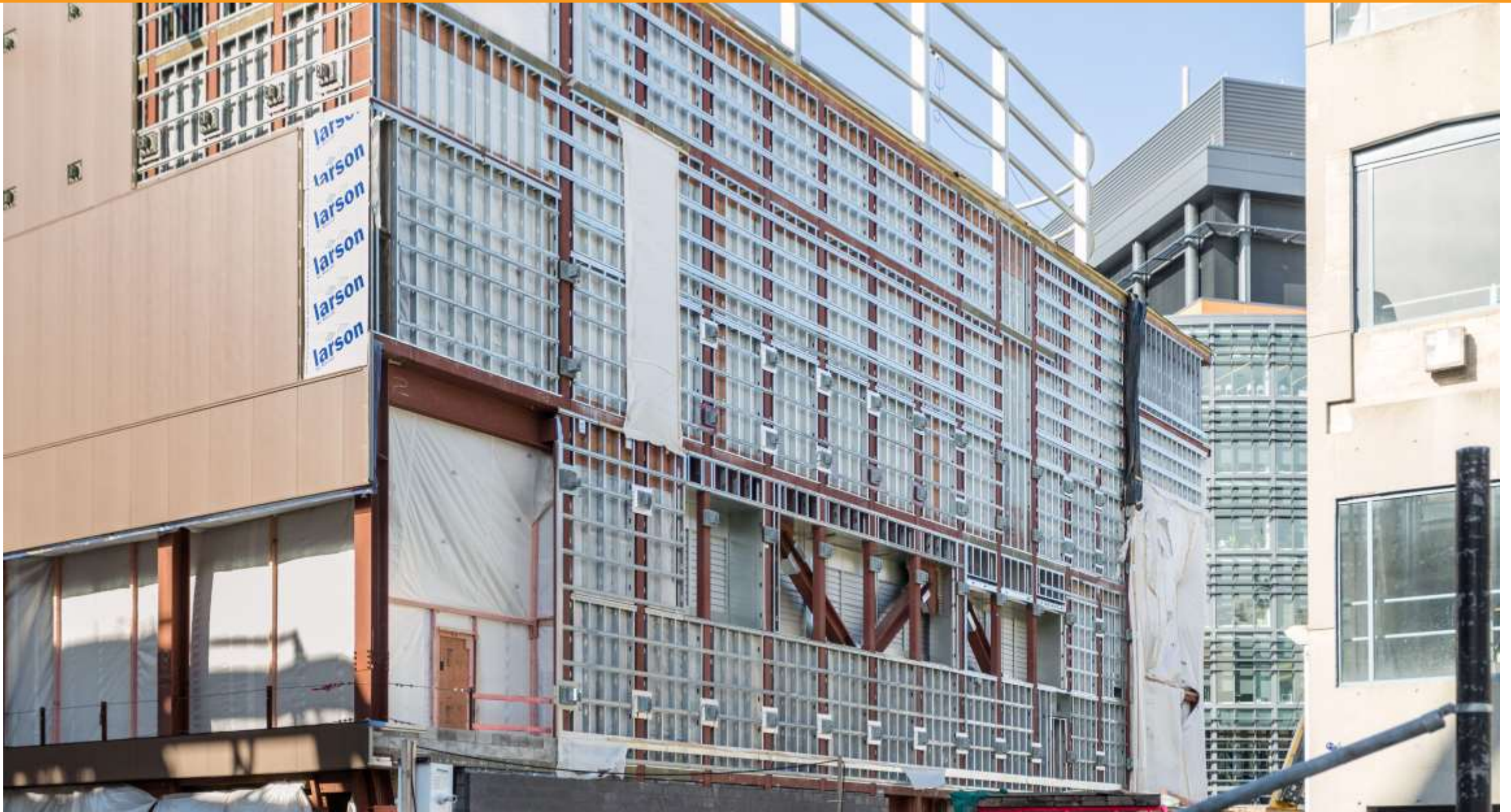


ELLENZWEIG

BOND









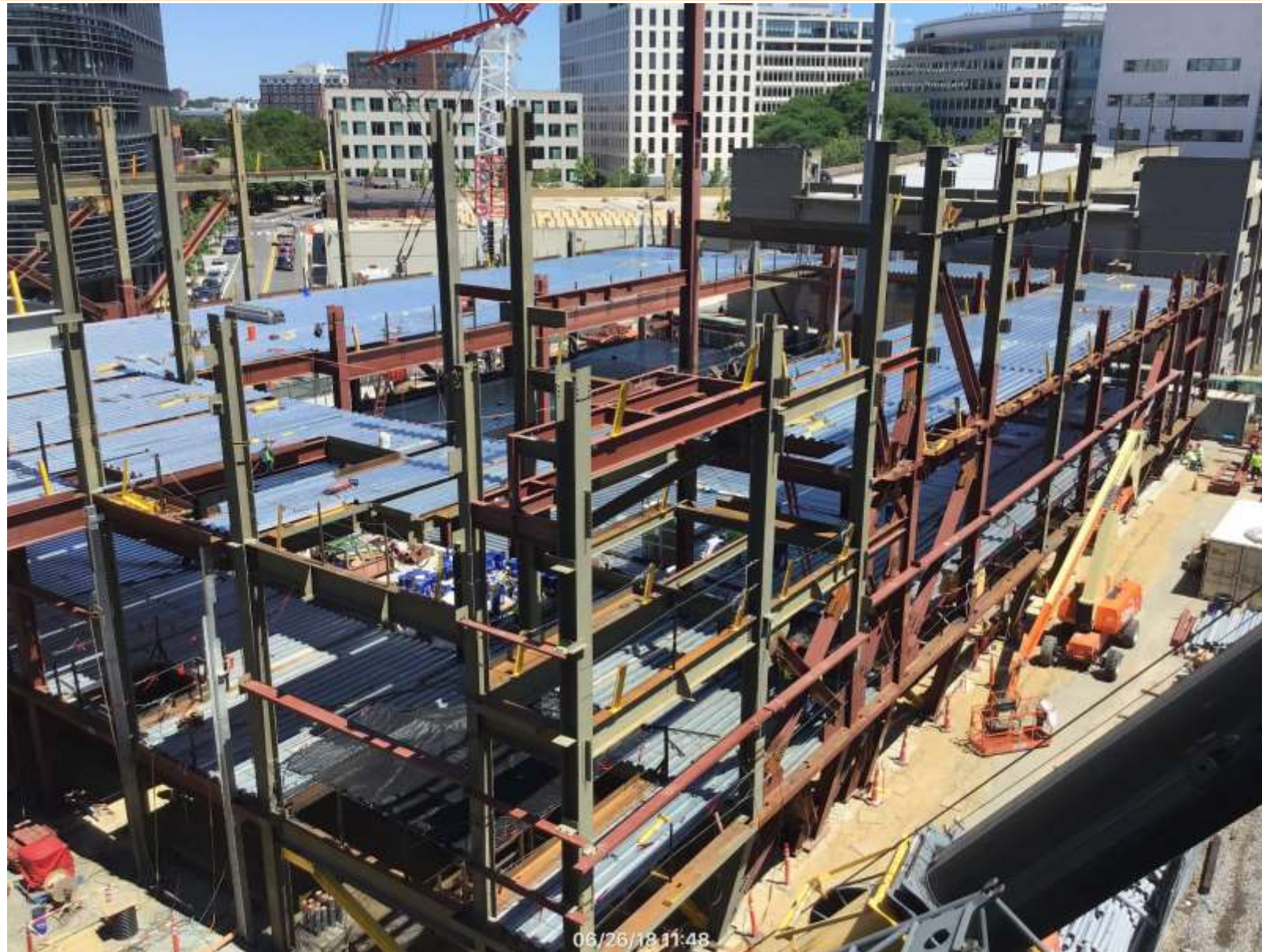
## C: Steel Erection

VANDERWEIL



ELLENZWEIG

BOND













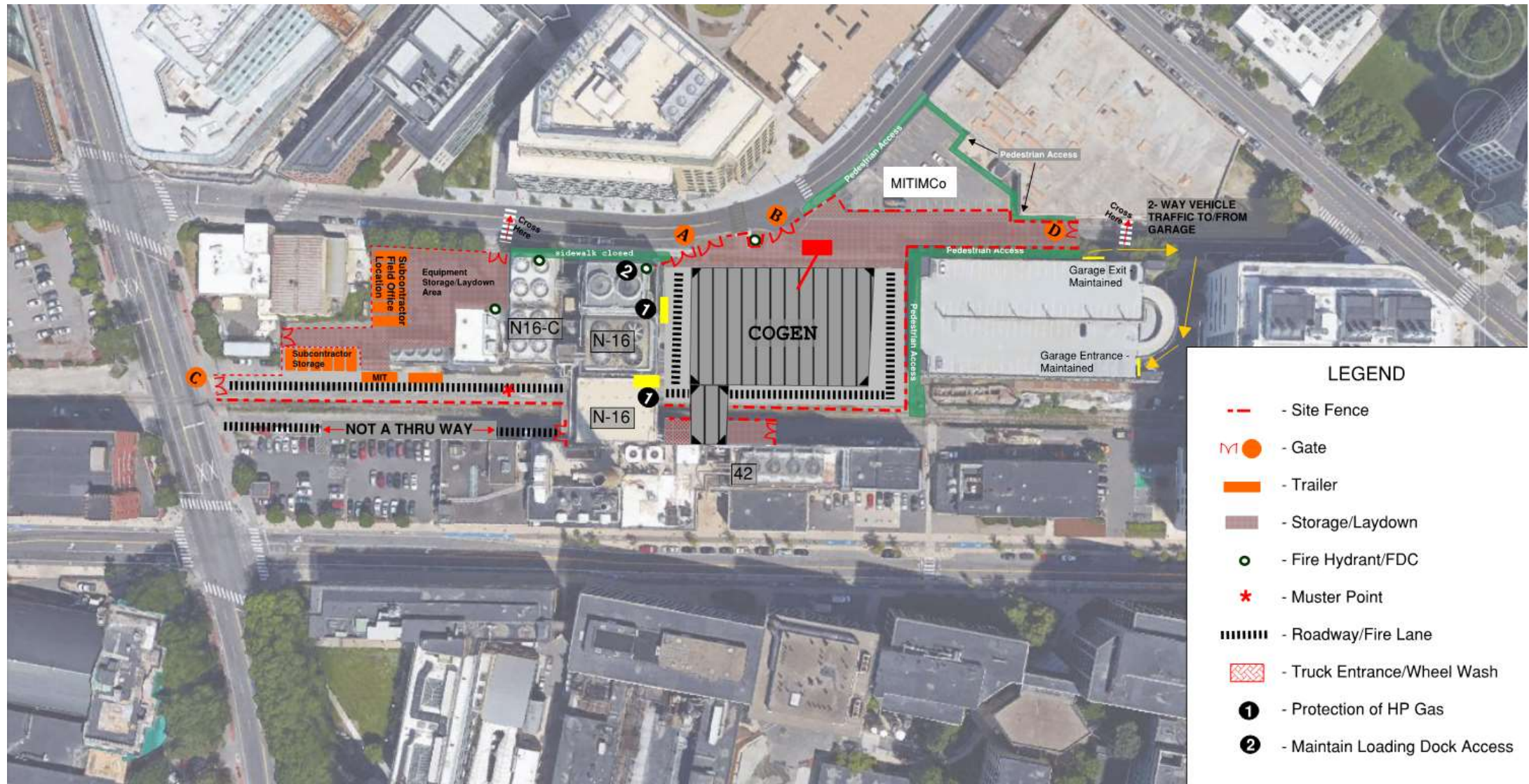
# D: Power Island Rough Set

VANDERWEIL



ELLENZWEIG

BOND





## D: Power Island Rough Set

VANDERWEIL



ELLENZWEIG

BOND





## D: Power Island Rough Set

VANDERWEIL



ELLENZWEIG

BOND





## D: Next Steps and Schedule for Completion

VANDERWEIL



ELLENZWEIG

BOND





















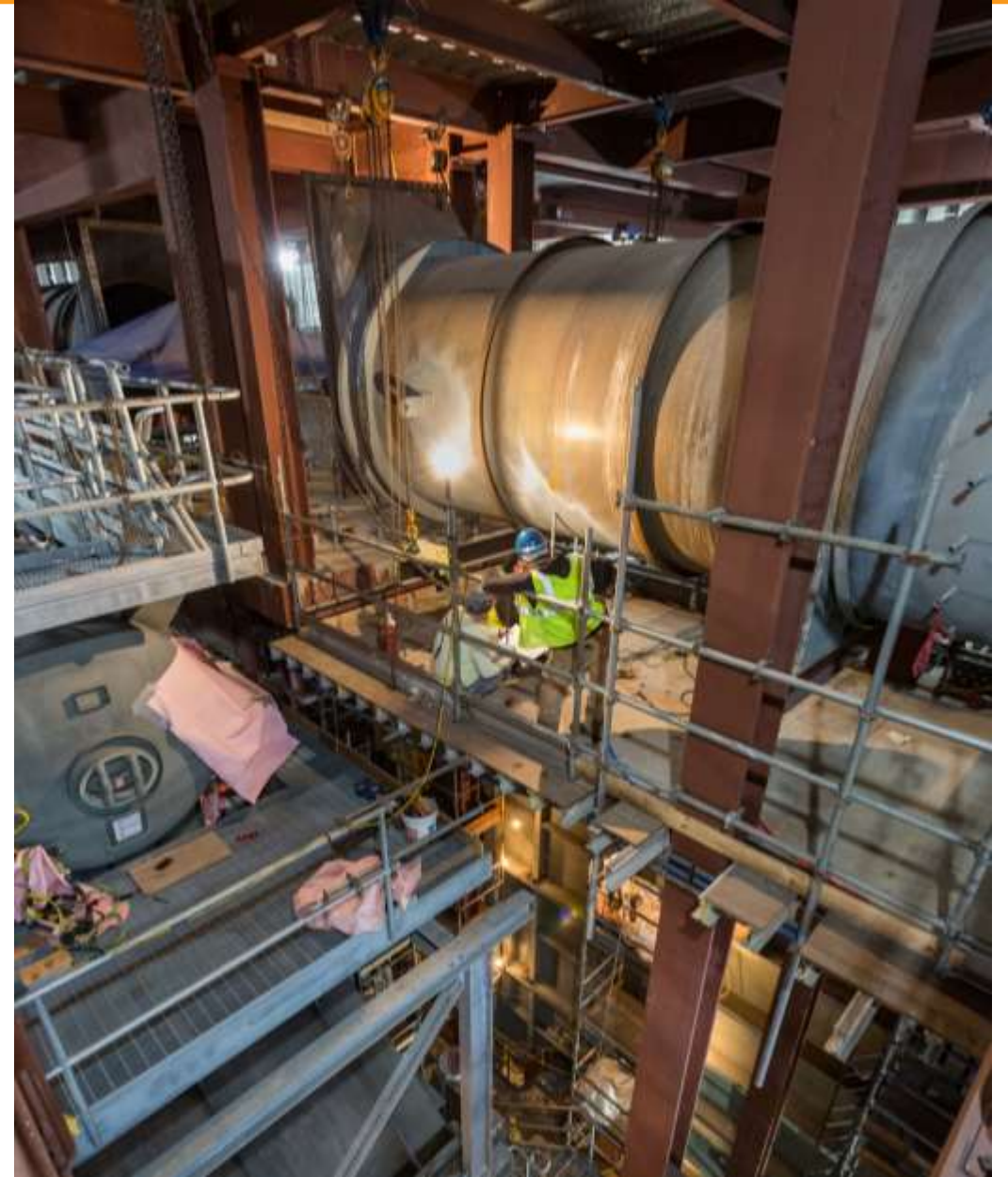
# Construction Photos

VANDERWEIL

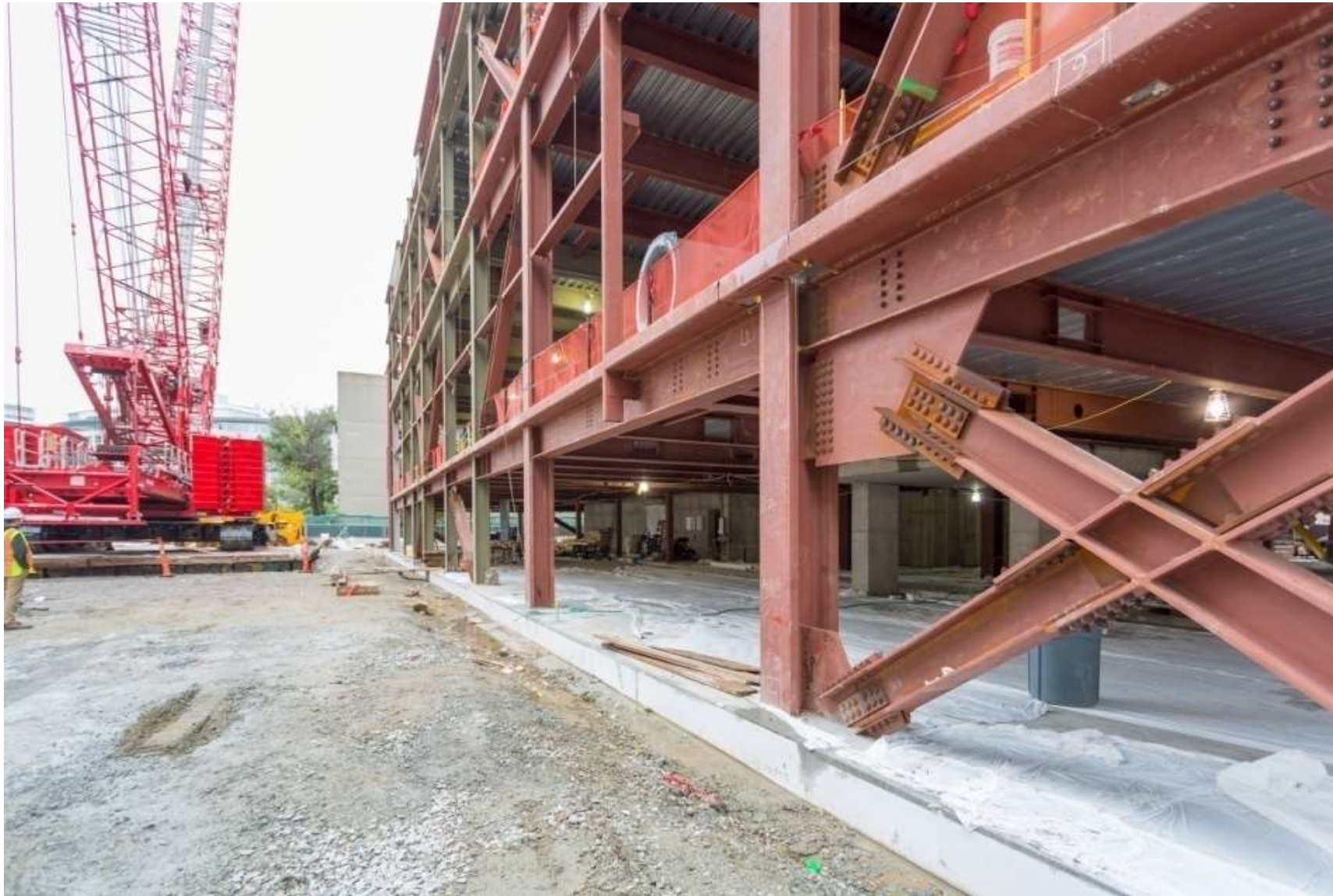


ELLENZWEIG

BOND









# ANY QUESTIONS?

<https://www.youtube.com/watch?v=J1JhfGKb7j4&feature=youtu.be>

BUILDING A BETTER SOCIETY  
THROUGH ENDURING RELATIONSHIPS

VANDERWEIL 



ELLENZWEIG







**Michael Thornton**

Principal, R.G. Vanderweil Engineers, P.C.

[MThornton@Vanderweil.com](mailto:MThornton@Vanderweil.com)

617.435.6516 cell



**Dominick Roveto, AIA, LEED AP**

President, Ellenzweig

[ROVETO@ellenzweig.com](mailto:ROVETO@ellenzweig.com)

617.872.7365 cell



**JESSE CONKLIN**

Senior Project Manager, Bond Brothers, Inc.

[jconklin@bondbrothers.com](mailto:jconklin@bondbrothers.com)

617.938.4175 cell



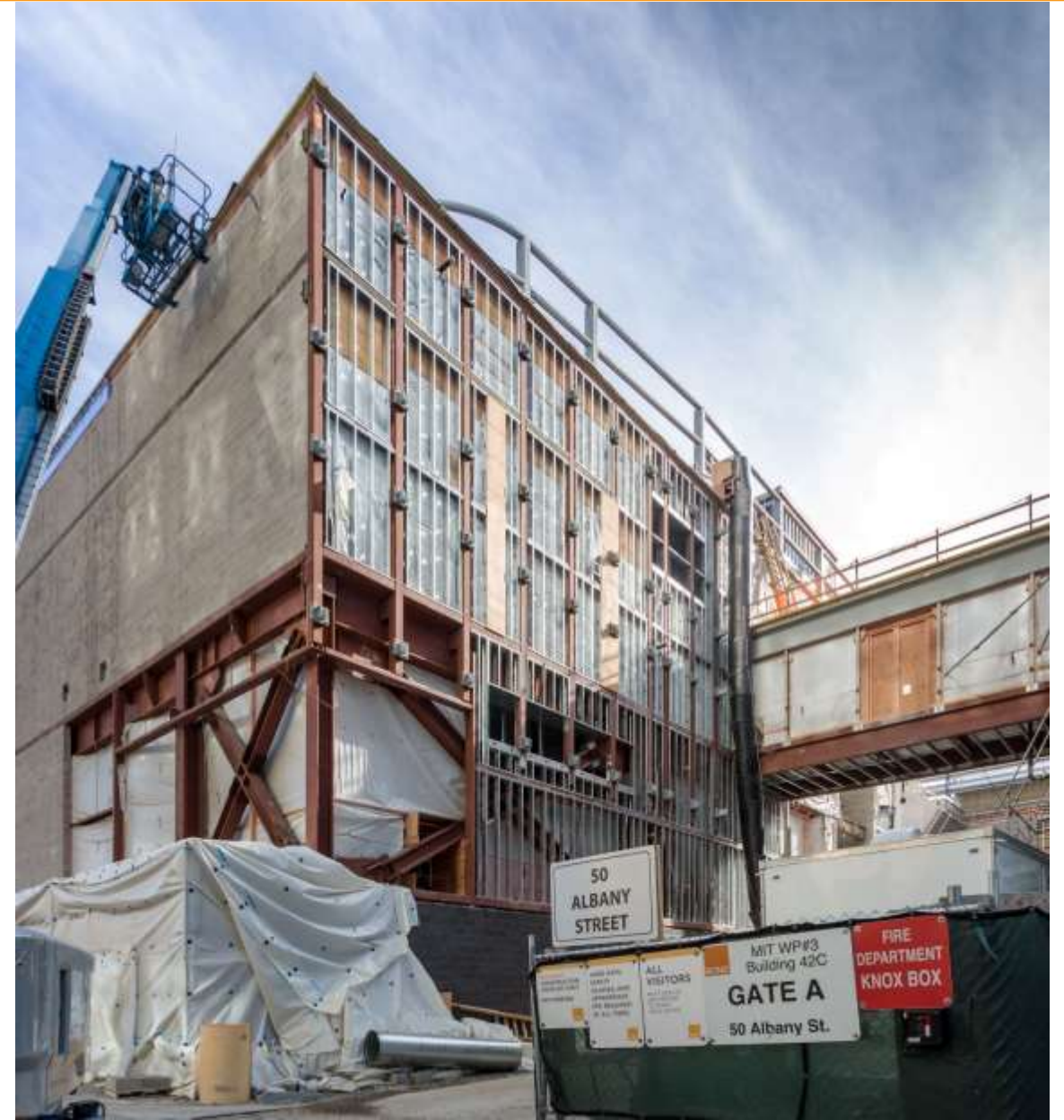
# Construction Photos

VANDERWEIL



ELLENZWEIG

BOND



50  
ALBANY  
STREET

MIT WP#3  
Building 42C  
**GATE A**  
50 Albany St.

FIRE  
DEPARTMENT  
KNOX BOX







