



BOND

PRESENT

Form & Function of Large Scale CHP in an Urban Environment





- Team Introductions
- Engineering Considerations
- Architectural Considerations
- Construction Considerations

TEAM INTRODUCTIONS

VANDERWEIL



ELLENZWEIG

BOND



MICHAEL W THORNTON

Principal
VANDERWEIL



DOMINICK ROVETO, AIA, LEED AP

President
ELLENZWEIG



JESSE CONKLIN

Senior Project Manager
BOND

- Provide resiliency in delivery of utilities during a flood condition of Charles River
- Increase reliability of existing MicroGrid
- Provide support to new science building and campus loads
- Improve efficiency of steam production while reducing operating costs
- Eliminate use of fuel oil except for required code back up
- Reduce greenhouse gas footprint

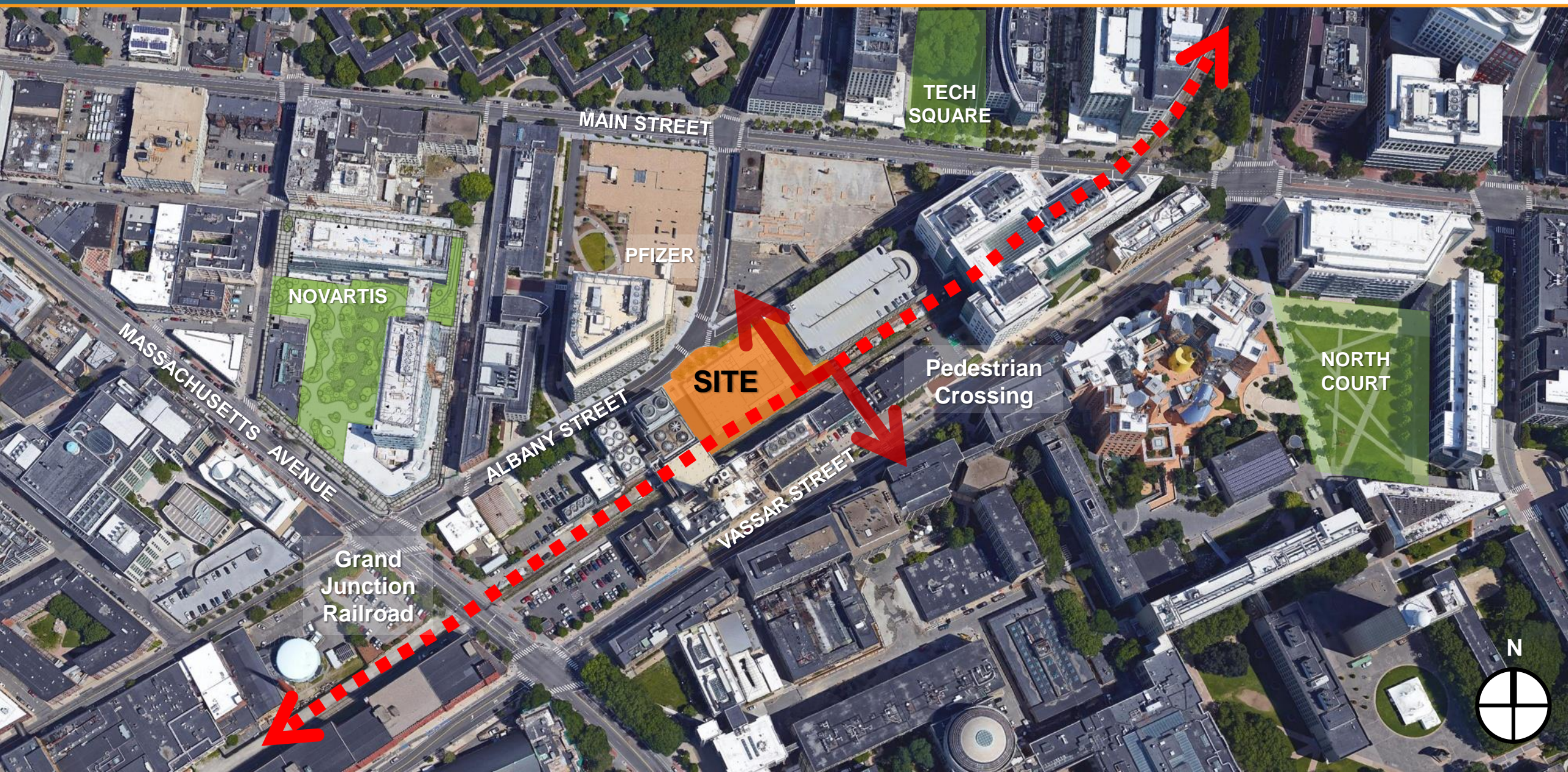
A: MIT and Community Sensitivities around Site and Building Aesthetics

VANDERWEIL



ELLENZWEIG

BOND



A: MIT and Community Sensitivities around Site and Building Aesthetics

VANDERWEIL

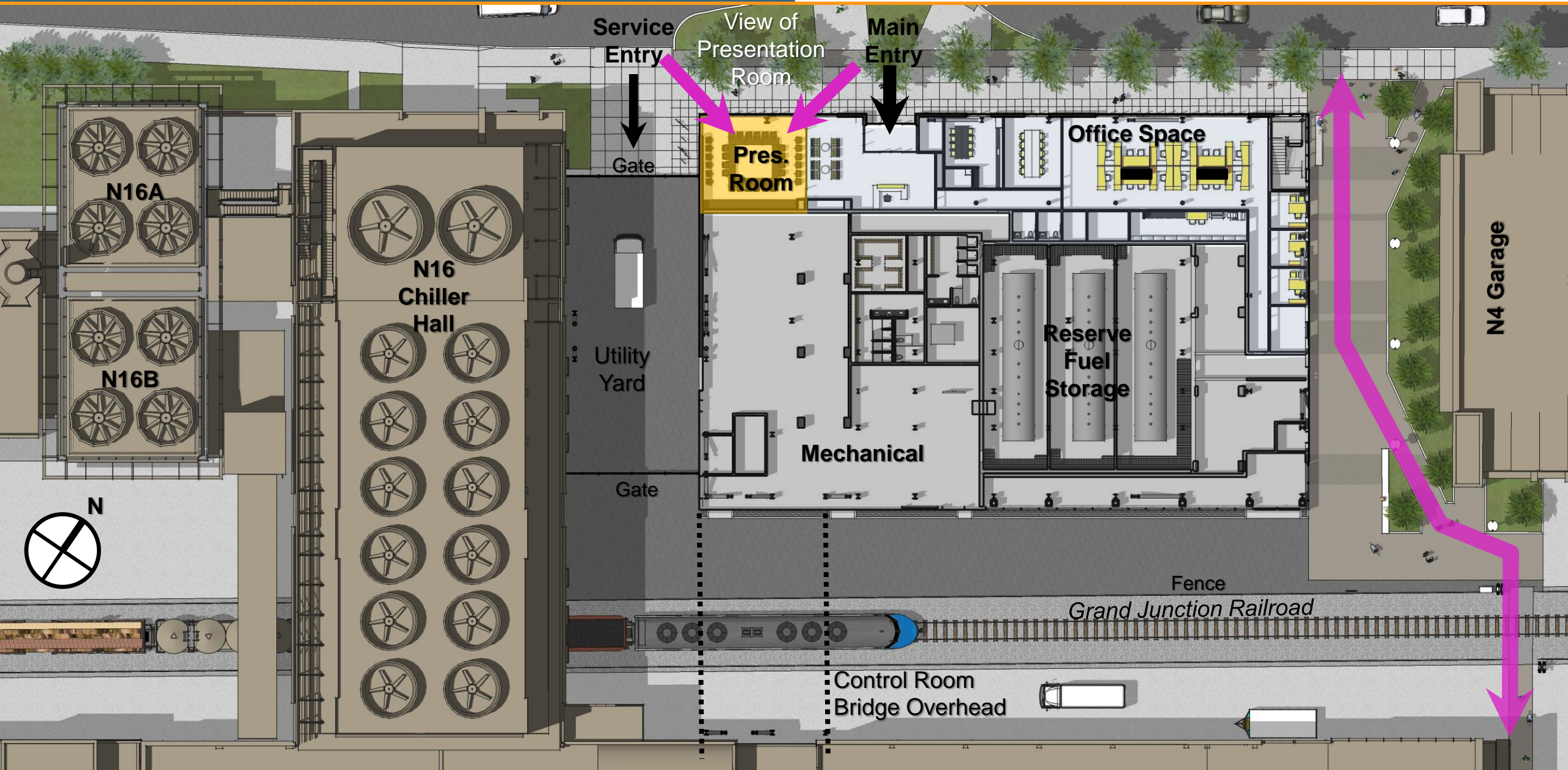


ELLENZWEIG

BOND



B: Architectural Overview
Plan at Ground Floor (el. 17'-9")



B: Architectural Overview Outreach

VANDERWEIL



ELLENZWEIG

BOND



B: Architectural Overview Presentation Room

VANDERWEIL



ELLENZWEIG

BOND



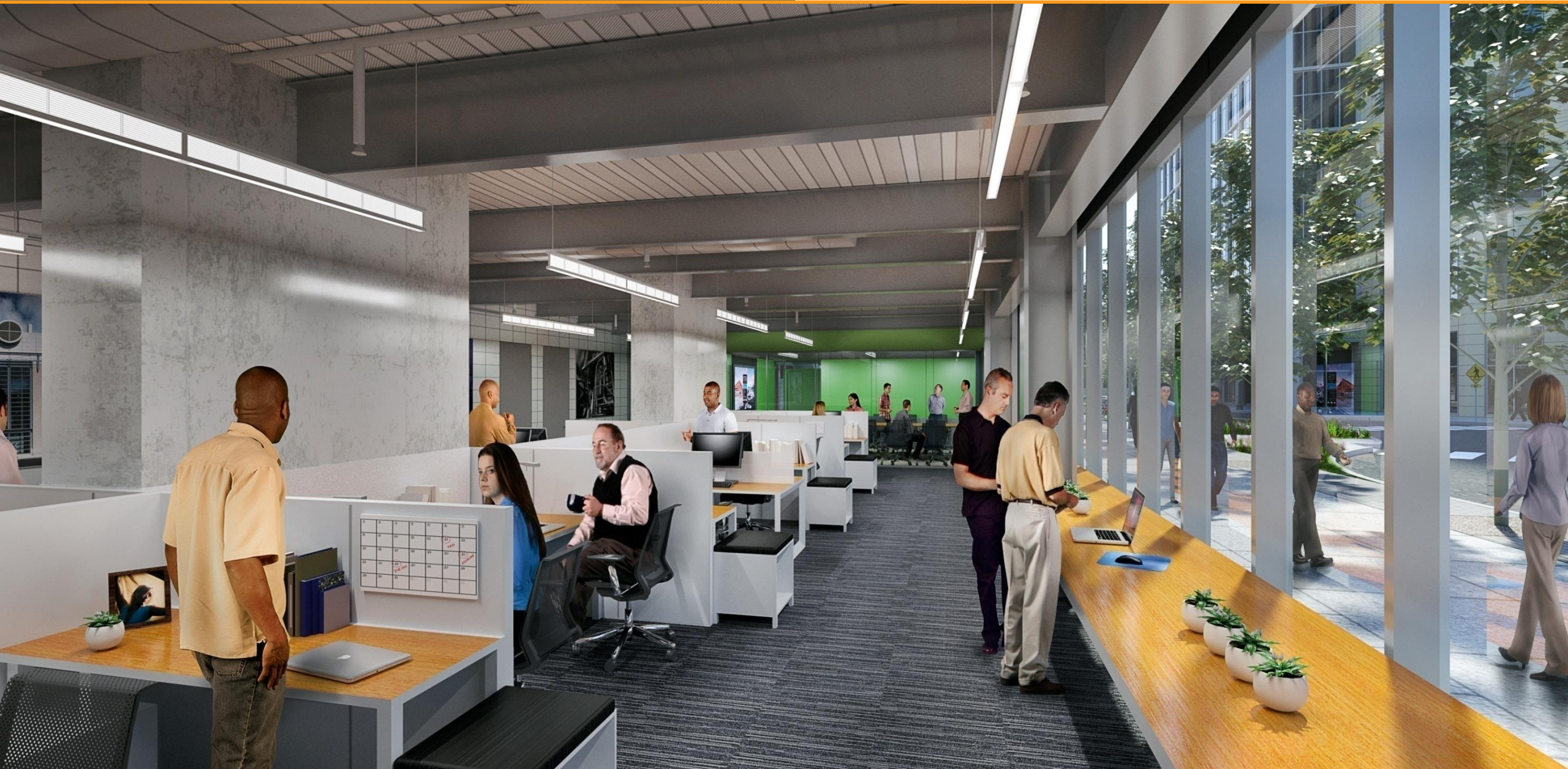
B: Architectural Overview Office Area

VANDERWEIL

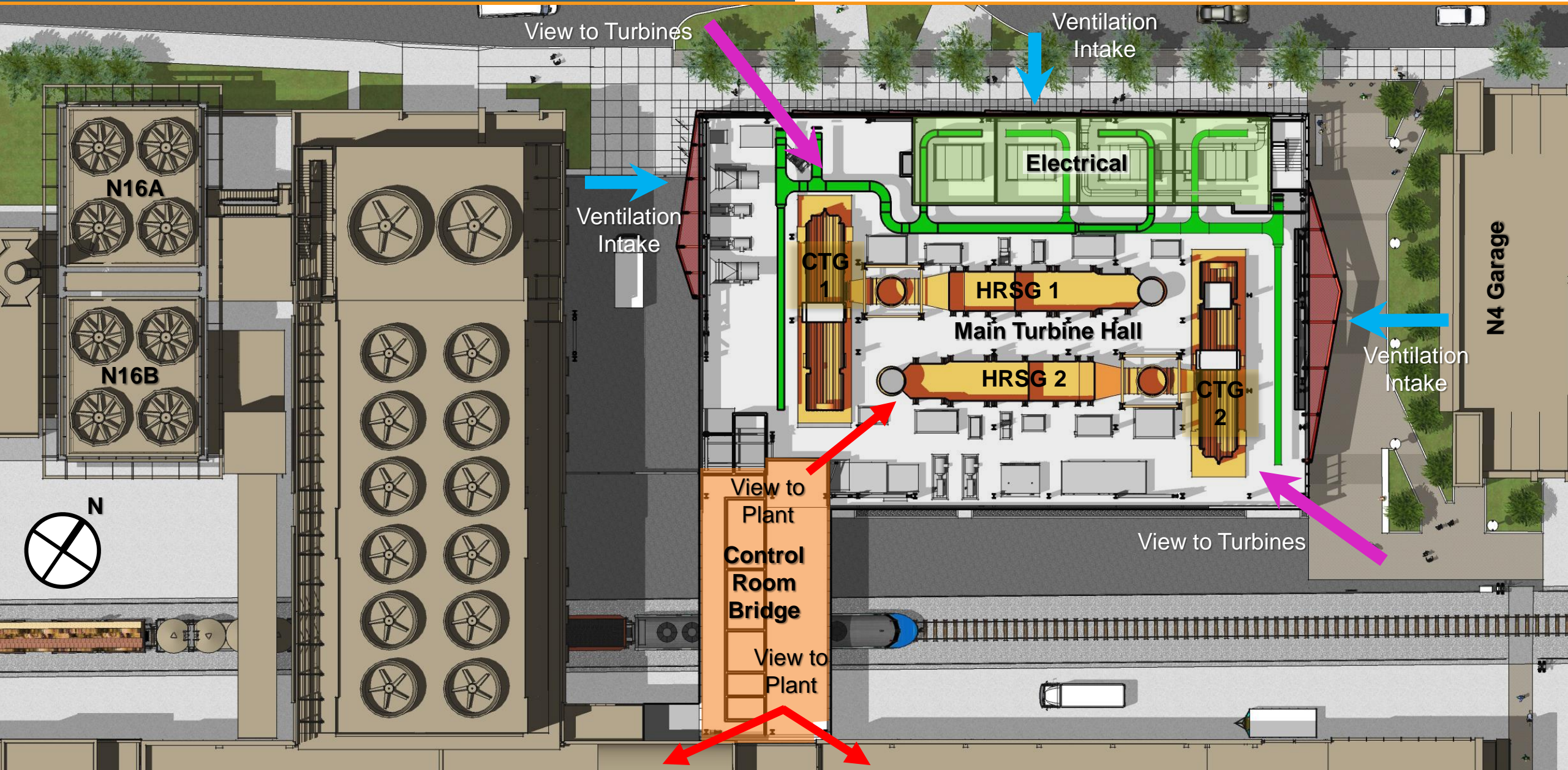


ELLENZWEIG

BOND



B: Architectural Overview
Plan at Main Turbine Hall (el. 30'-0")



B: Architectural Overview Control Room Bridge

VANDERWEIL



ELLENZWEIG

BOND



B: Architectural Overview

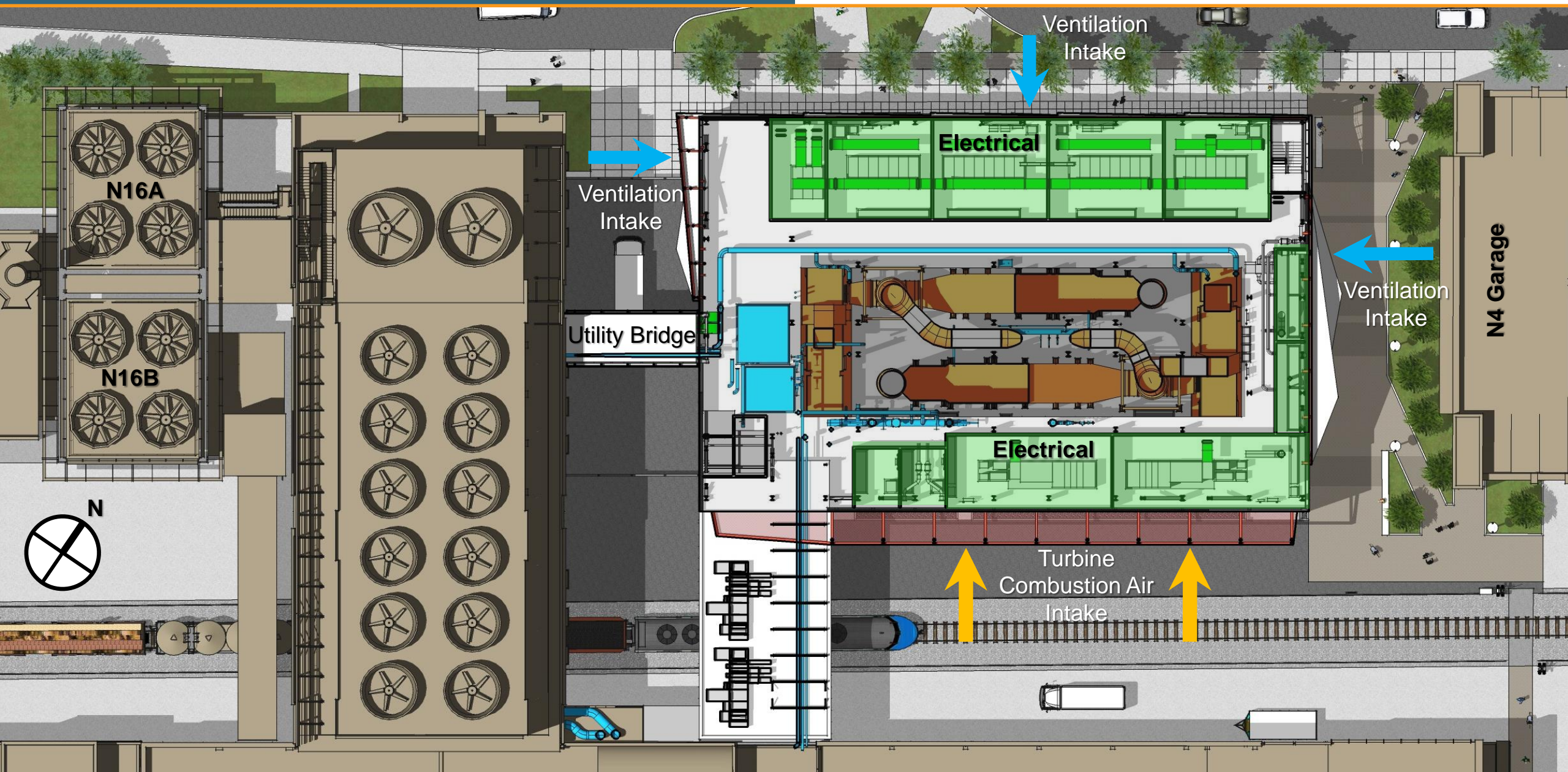
Plan at Main Electrical Floor (el. 50'-6")

VANDERWEIL



ELLENZWEIG

BOND



B: Architectural Overview Building Cross Section

VANDERWEIL



ELLENZWEIG

BOND



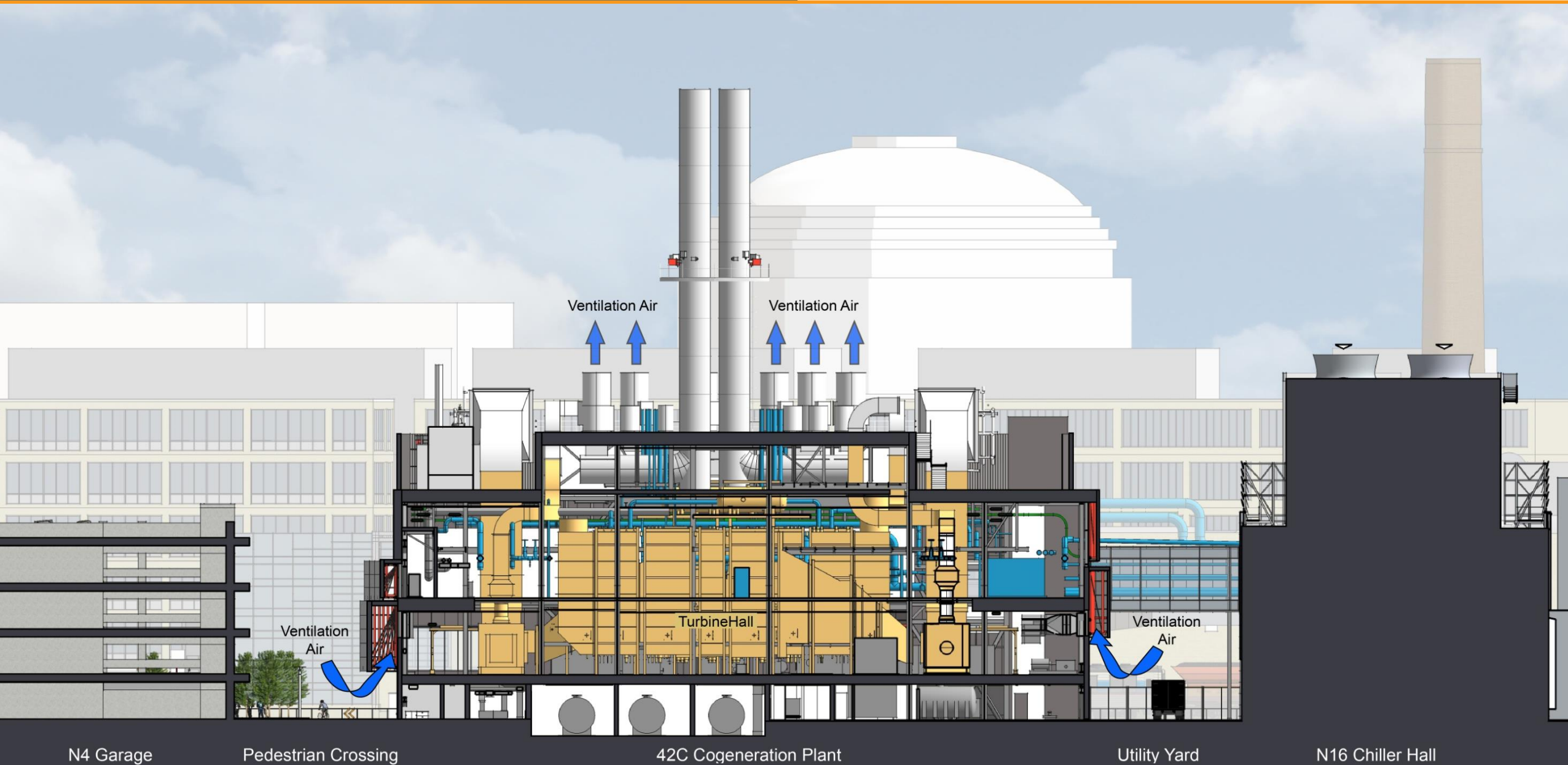
B: Architectural Overview Building Longitudinal Section

VANDERWEIL



ELLENZWEIG

BOND



C: Finished Product

VANDERWEIL



ELLENZWEIG

BOND



C: Finished Product

VANDERWEIL



ELLENZWEIG

BOND



C: Finished Product

VANDERWEIL



ELLENZWEIG

BOND



C: Finished Product

VANDERWEIL



ELLENZWEIG

BOND



C: Finished Product

VANDERWEIL

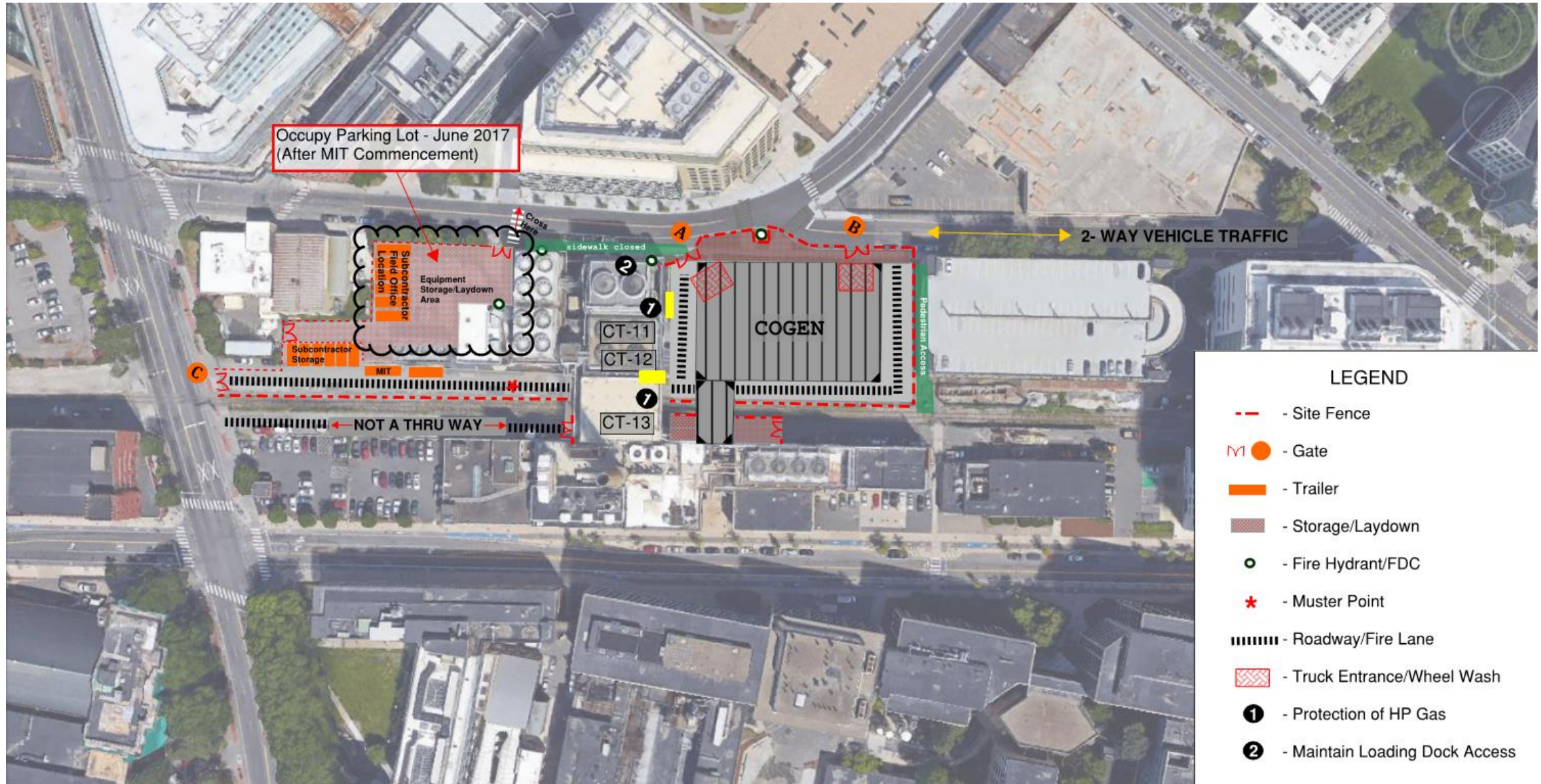


ELLENZWEIG

BOND



A: Site Challenges



A: Site Challenges

VANDERWEIL



ELLENZWEIG

BOND



A: Site Challenges

VANDERWEIL



ELLENZWEIG

BOND





C: Steel Erection

VANDERWEIL



ELLENZWEIG

BOND

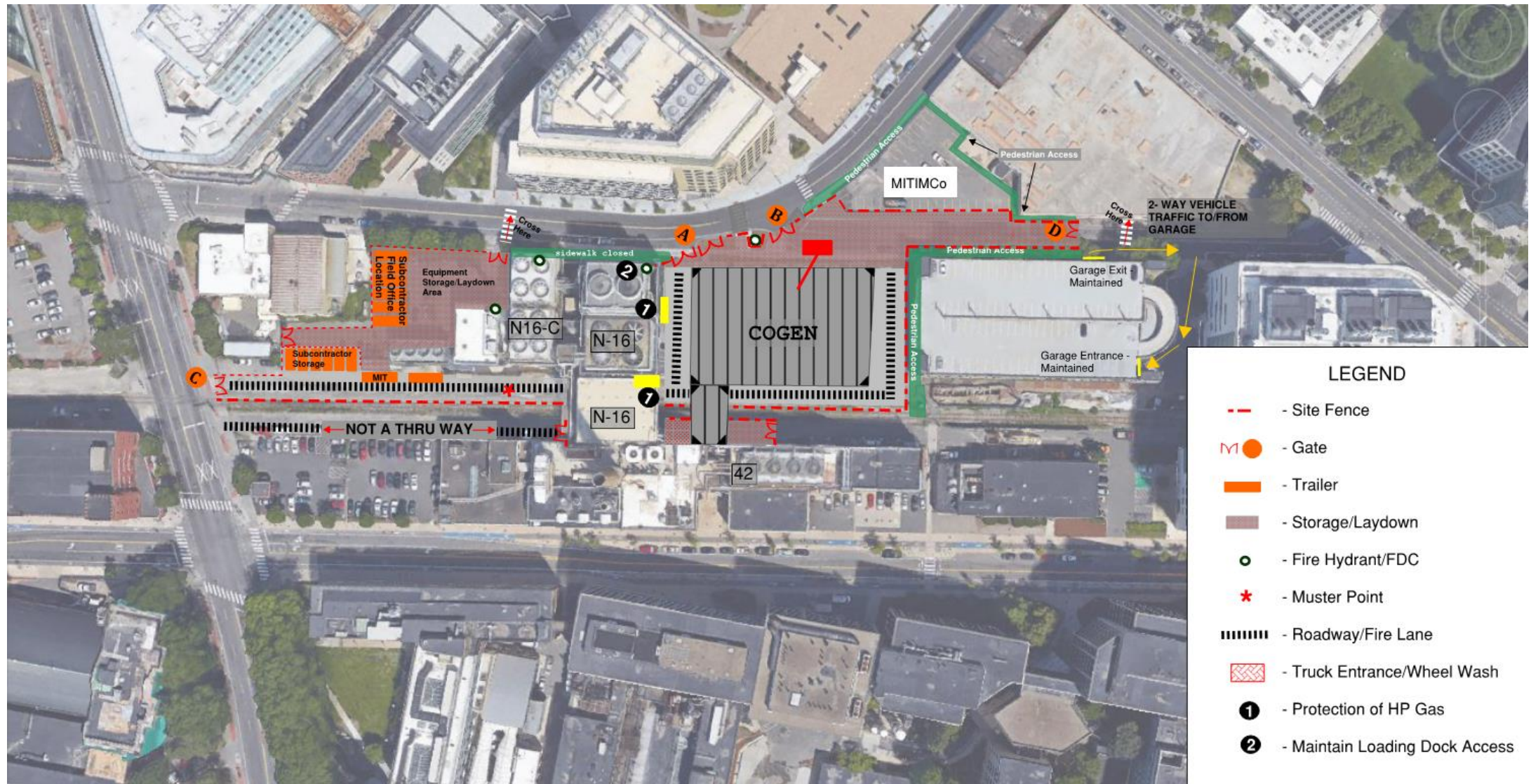






ELLENZWEIG

BOND



D: Power Island Rough Set

VANDERWEIL



ELLENZWEIG

BOND



D: Power Island Rough Set

VANDERWEIL



ELLENZWEIG

BOND



D: Next Steps and Schedule for Completion

VANDERWEIL



ELLENZWEIG

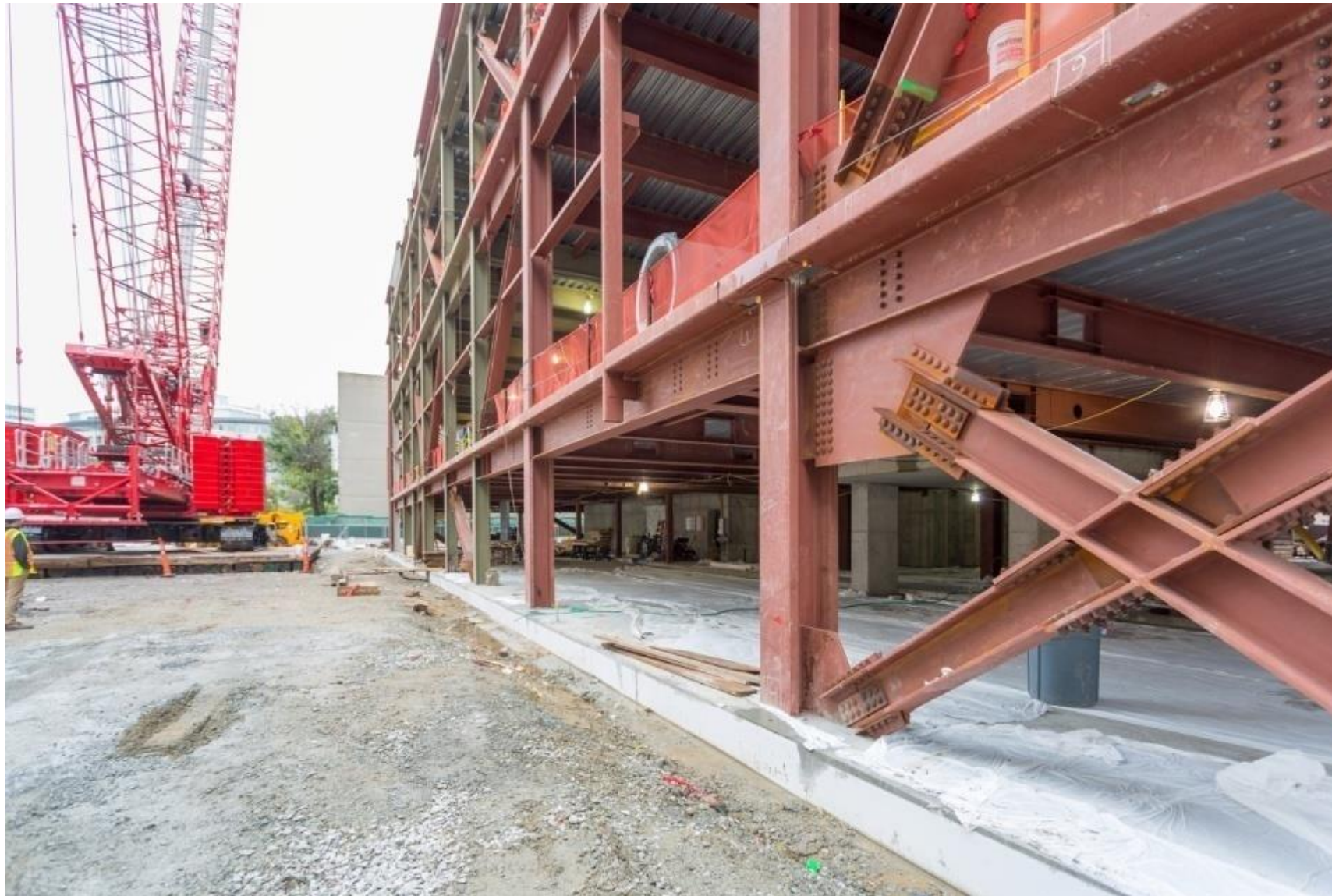
BOND











ANY QUESTIONS?

<https://www.youtube.com/watch?v=J1JhfGKb7j4&feature=youtu.be>

BUILDING A BETTER SOCIETY
THROUGH ENDURING RELATIONSHIPS

VANDERWEIL 



ELLENZWEIG

BOND



Michael Thornton

Principal, R.G. Vanderweil Engineers, P.C.

MThornton@Vanderweil.com

617.435.6516 cell



Dominick Roveto, AIA, LEED AP

President, Ellenzweig

ROVETO@ellenzweig.com

617.872.7365 cell



JESSE CONKLIN

Senior Project Manager, Bond Brothers, Inc.

jconklin@bondbrothers.com

617.938.4175 cell

Spare Slides



PRESENT

Form & Function of Large Scale CHP in an Urban Environment





PRESENT

Form & Function of Large Scale CHP in an Urban Environment





PRESENT

Form & Function of Large Scale CHP in an Urban Environment





BOND

PRESENT

Form & Function of Large Scale CHP in an Urban Environment





BOND

PRESENT

Form & Function of Large Scale CHP in an Urban Environment





BOND

PRESENT

Form & Function of Large Scale CHP in an Urban Environment





- Team Introductions
- Engineering Considerations
- Architectural Considerations
- Construction Considerations

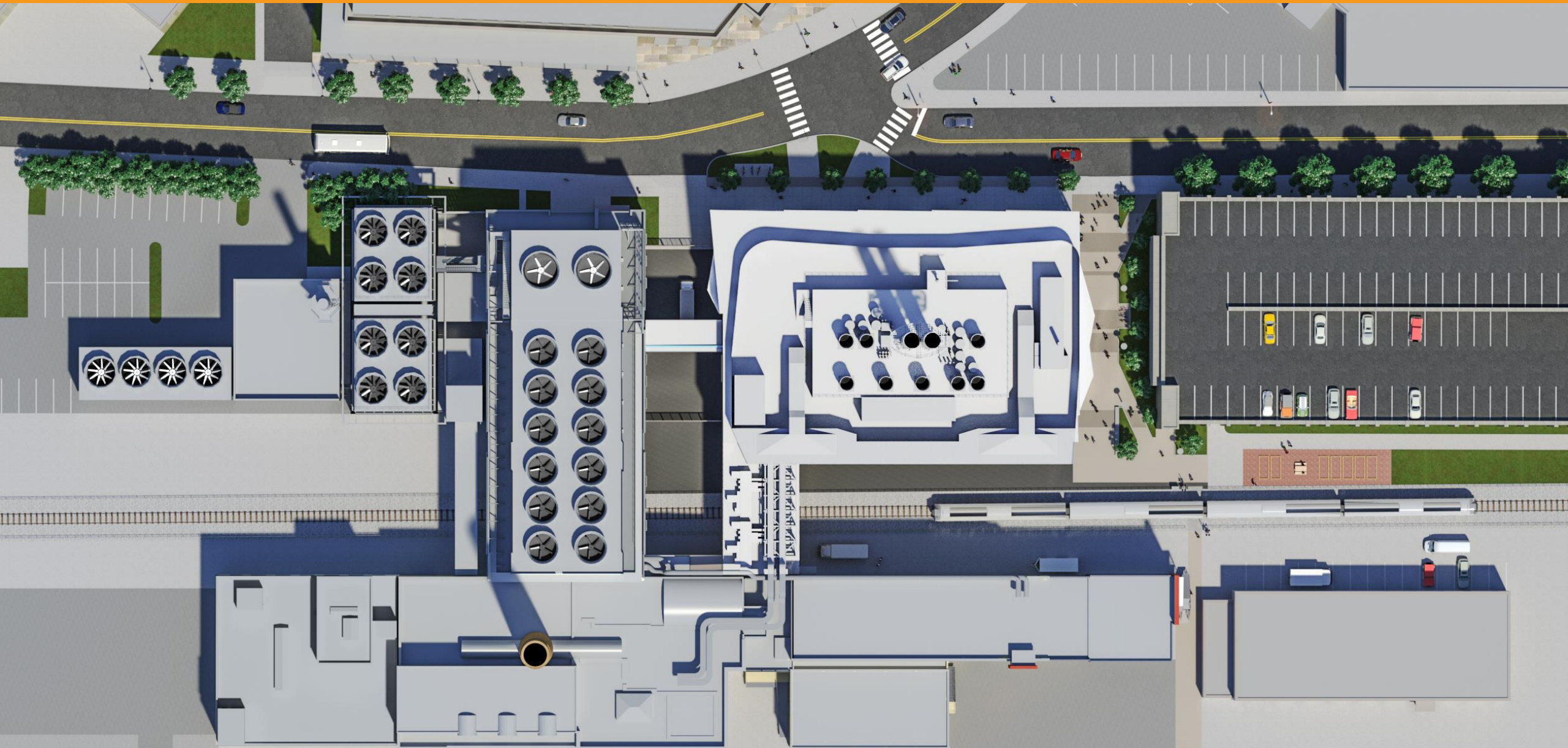
B: Architectural Overview Plan at Roof Level

VANDERWEIL



ELLENZWEIG

BOND



C: Finished Product

VANDERWEIL



ELLENZWEIG

BOND



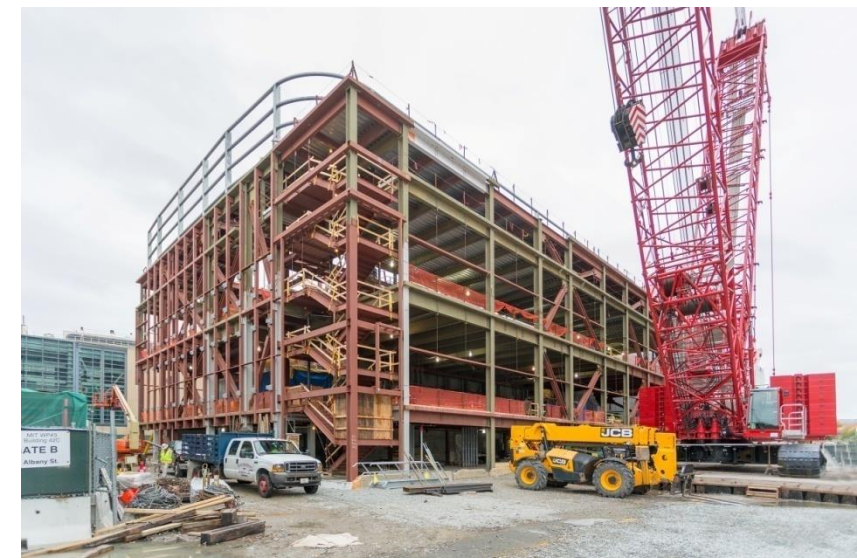
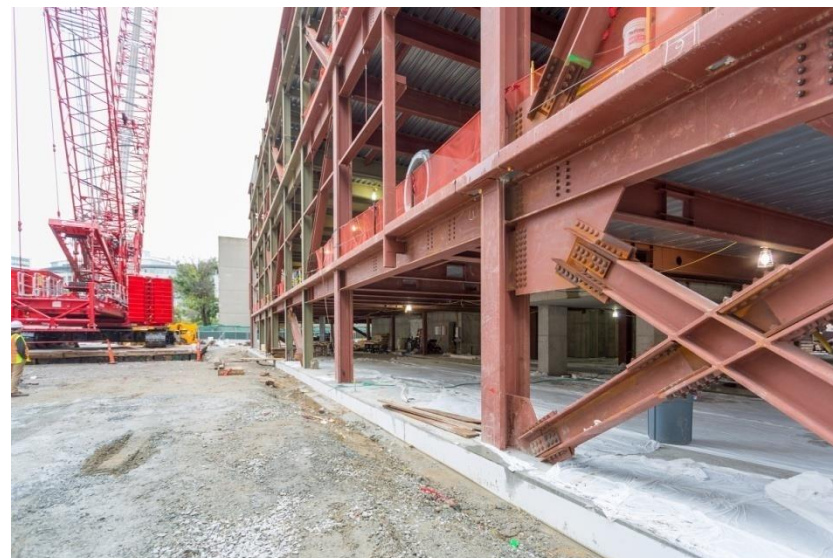
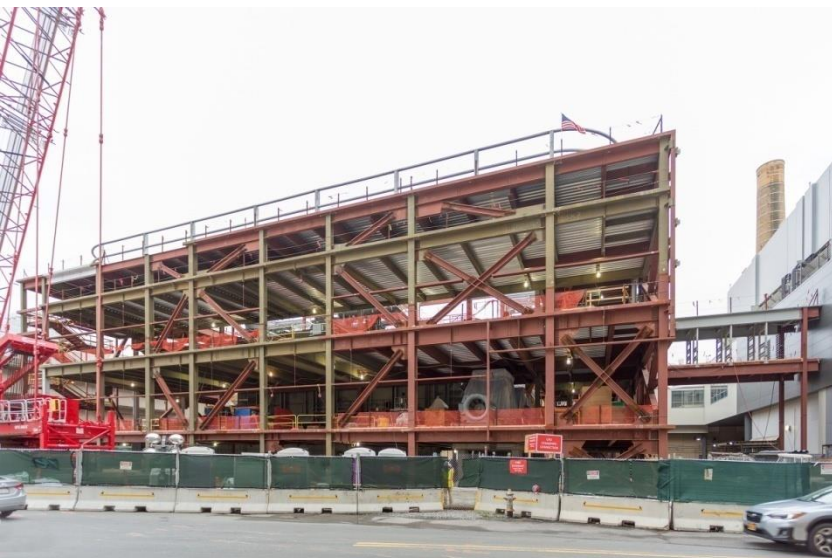
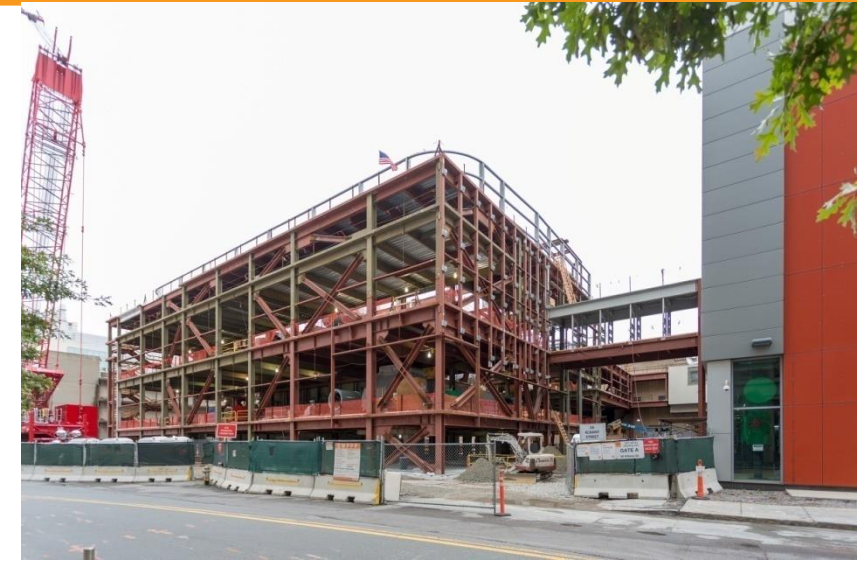
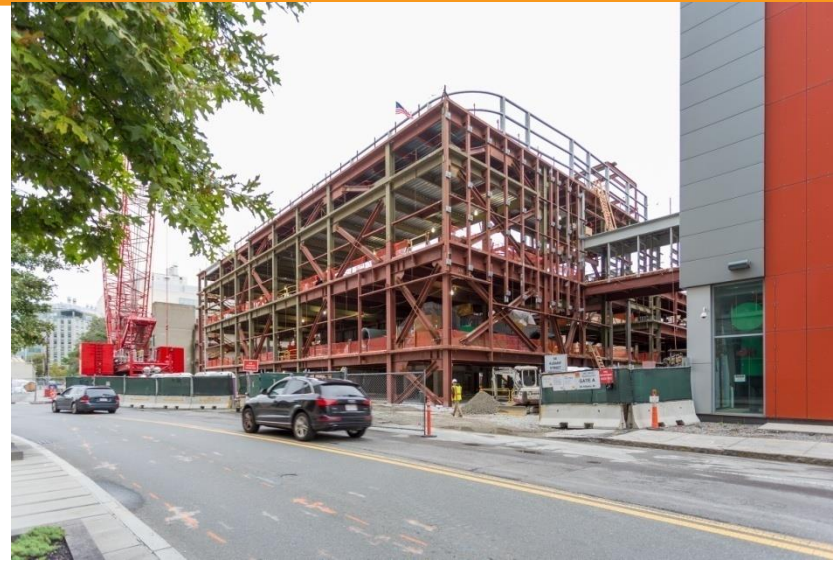
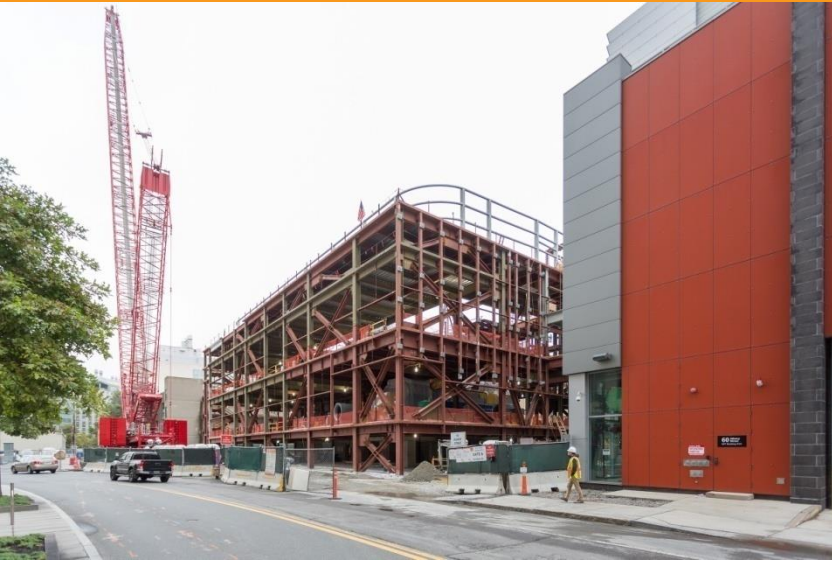
D: Construction Photos

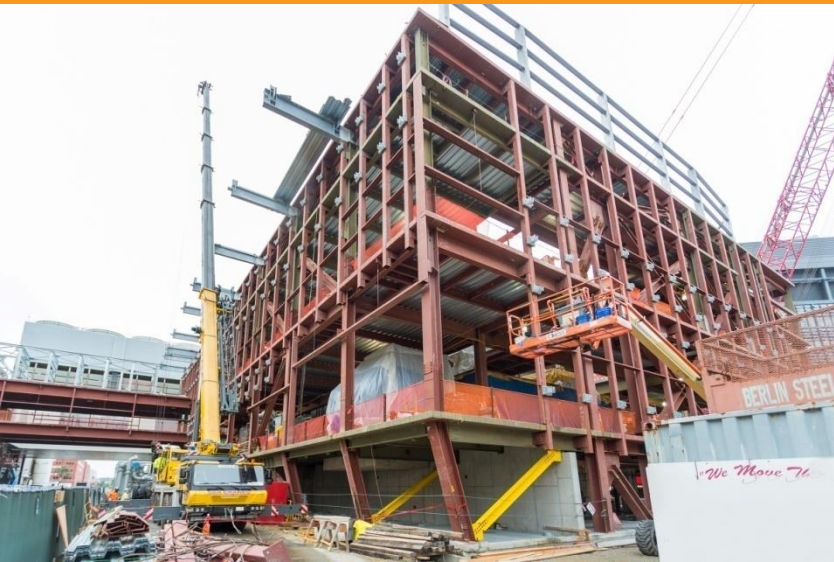
VANDERWEIL



ELLENZWEIG

BOND





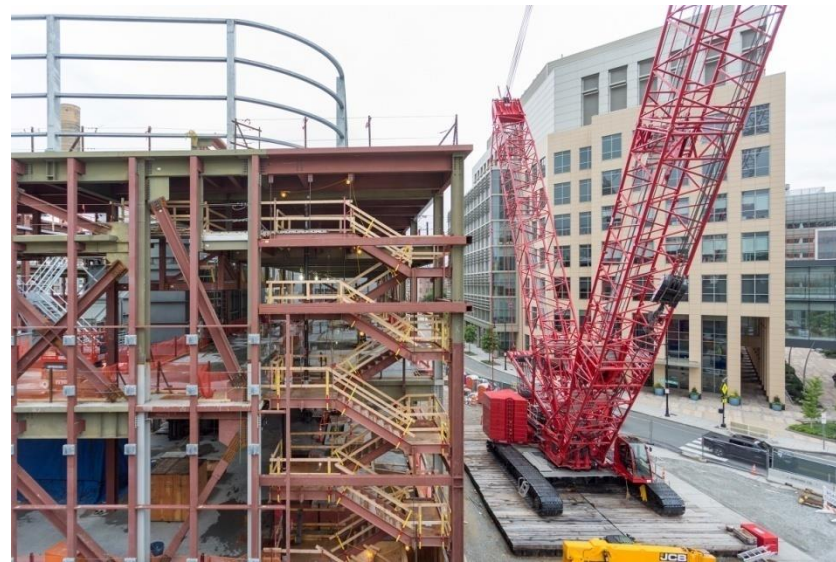
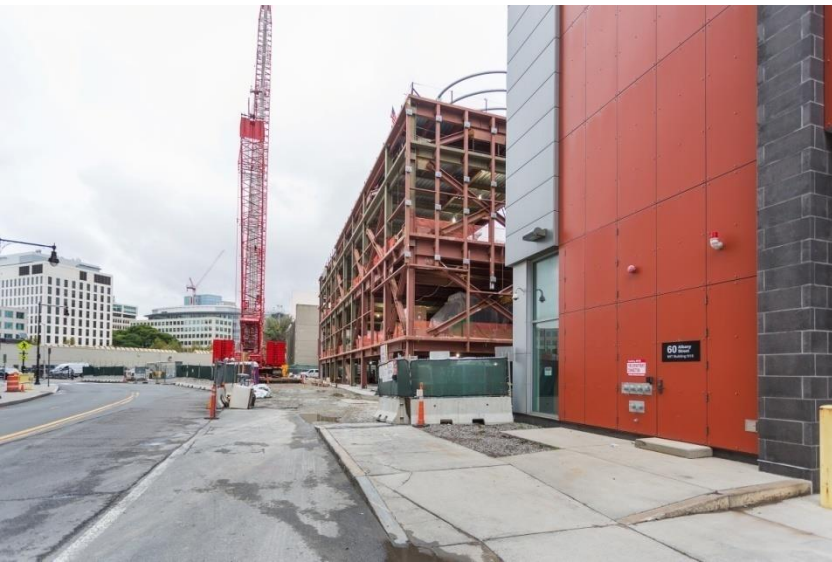
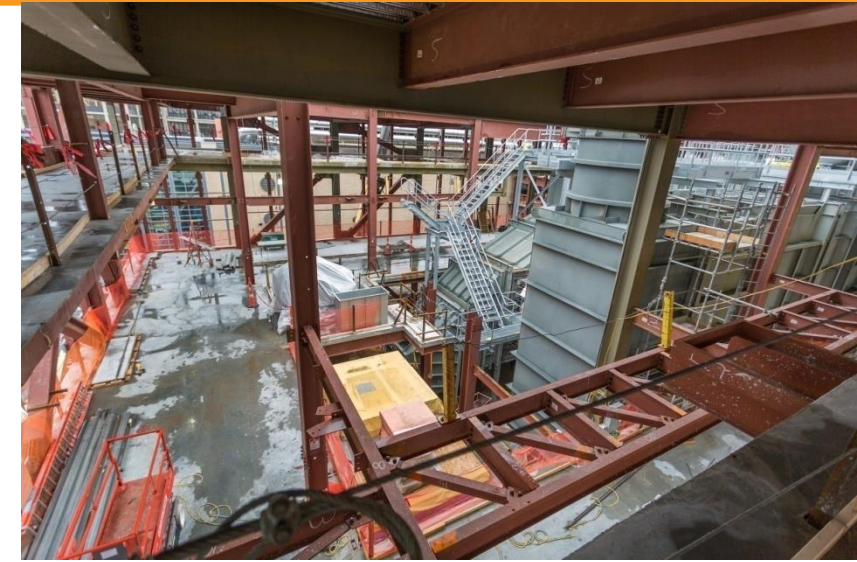
D: Construction Photos

VANDERWEIL



ELLENZWEIG

BOND



D: Construction Photos

VANDERWEIL



ELLENZWEIG

BOND

