



BOND

# IDEA Presentation

*Underground Best Practices*

June 29, 2015

# Team



Stephen Pollard  
*RMF Engineering*



Elizabeth Nolder  
*RMF Engineering*



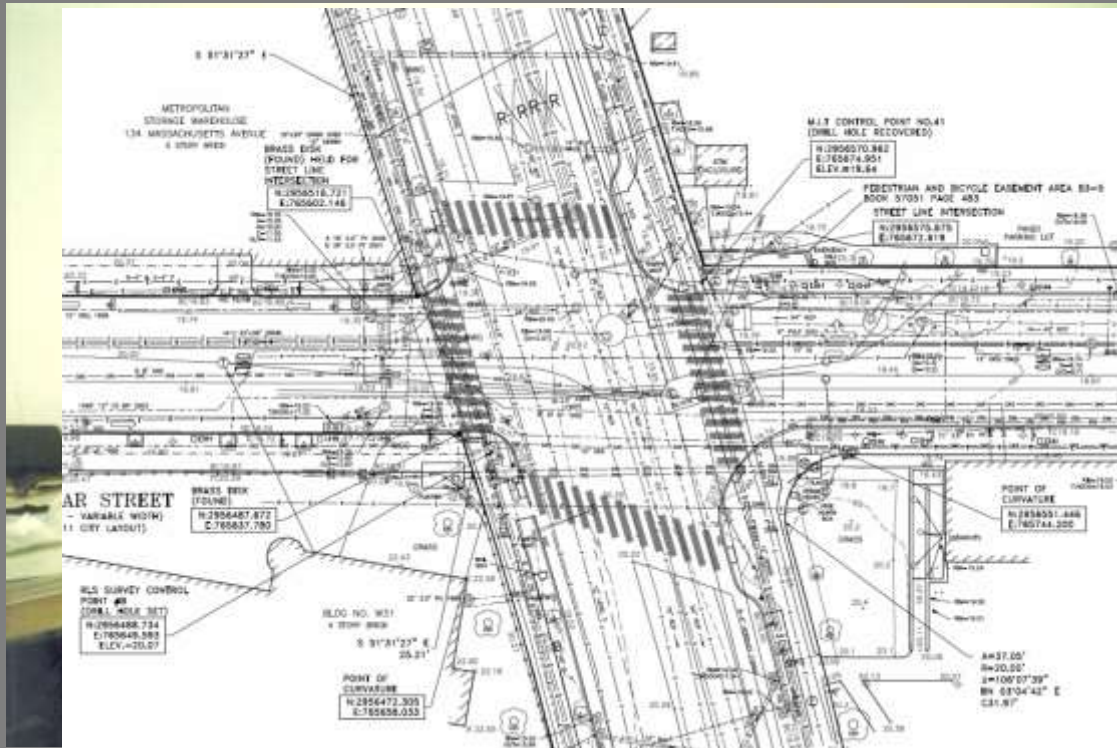
John Harmon  
*BOND*



Chris Decker  
*BOND*

# Gathering Information

- Owner's Records
- Discussions with Facilities/Staff
- Topographic Survey





# Existing Conditions – Topographic Survey

- Property Lines

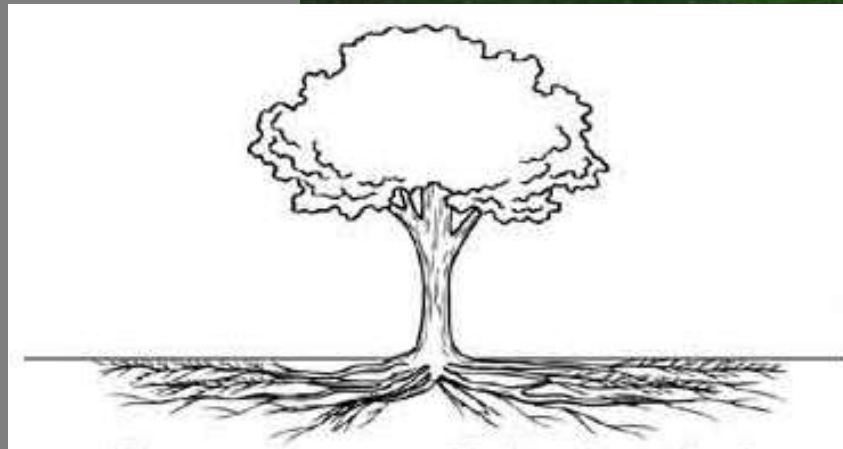






# Existing Conditions

- Property Lines
- Utilities
  - Location
  - Ownership
  - Easements
  - Material
    - Hazards
    - Durability
- Trees





# Geotech (Soils)

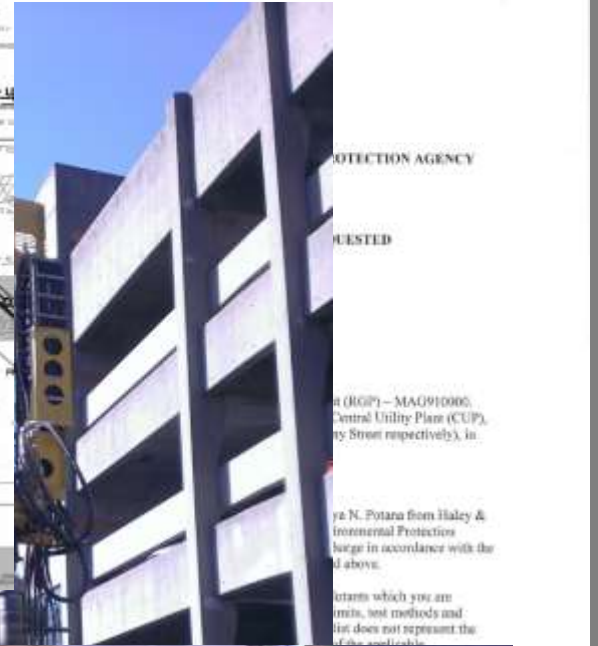
- Physical Properties
  - Structural Stability
- Hazardous Materials
  - Testing
  - Disposal
- Stockpile
- Groundwater
  - Testing
  - Disposal
    - Recharge
    - Discharge

Project Name: MIT STEAM UTILITY REPLACEMENT  
Project Number: 35184-300

Parameter	LCS %Recovery	Qual	LCSD %Recovery	Qual	%Recovery Limits	RPD	Qual	RPD Limit
TCLP Violates by EPA 1311 - Westborough Lab. Associated samples: 01-02 Batch: WG756203.1 WG756203.2								
Chlorobenzene	188		181		75-130	1		20
Carbon tetrachloride	104		187		63-132	3		20
Tetrachloroethene	81		88		70-138	1		20
Dichlorobenzene	90		91		75-138	1		20
1,2-Dichloroethane	115		111		70-138	1		20
Benzene	91		80		70-138	1		20
Vinyl chloride	88		80		55-149	1		20
1,1-Dichloroethene	86		86		67-145	2		20
Trichloroethene	87		87		70-138	2		20
1,4-Dichlorobenzene	85		84		70-138	1		20
2-Benzene	70		88		63-138	1		20

Surrogate	LCS %Recovery	Qual	LCSD %Recovery	Qual	Acceptance Criteria
1,2-Dichloroethane-04	107		100		70-130
Toluene-05	35		90		70-130
4-Bromobenzonitrile	94		97		70-130
Dibromofluoromethane	106		103		70-130

Page 11 of 43



# Schedule

- Moratorium
- Owner's Scheduled Events
  - Academic
    - Graduation
    - Research
  - Other
    - Sports
    - Fundraising
    - Concerts
    - Community Outreach



*Monday after Graduation*



# Schedule

- Moratorium
- Owner's Scheduled Events
  - Academic
    - Graduation
    - Sports
    - Research
  - Other
    - Fundraising
    - Concerts
    - Community Outreach
- City's Scheduled Events
  - Circus
  - Parades
  - Street Cleaning
  - Sports



# Schedule

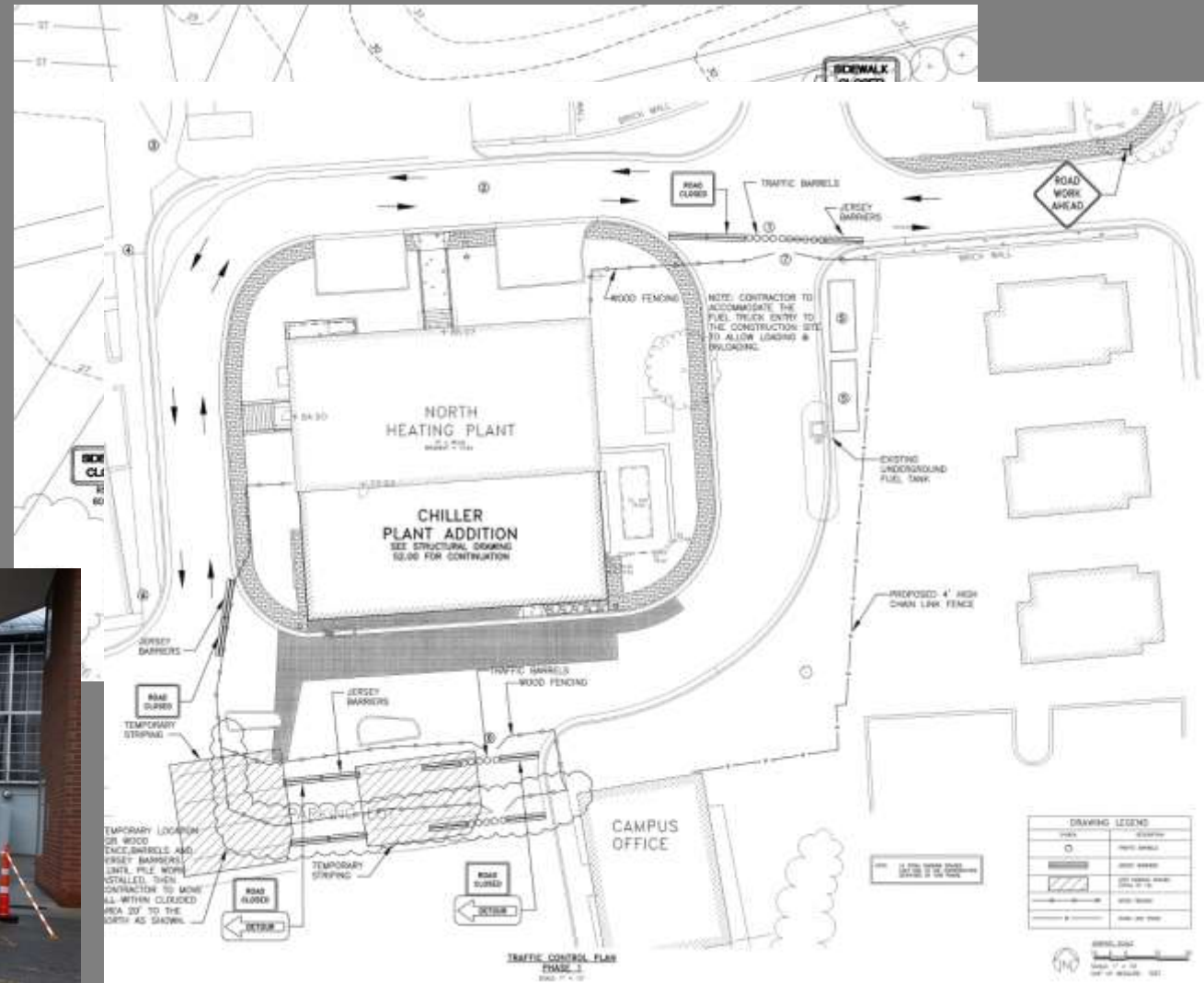
- Adjacent/Related Projects
- Utility Outages
  - Off-hour Work
  - Live Work
- Weather
- Material Lead Time
- Permitting





# Traffic Control

- Vehicles
  - Emergency Access
  - Truck Traffic
  - Parking
  - Bicycle



# Coordination

- Police Details
- Communications
  - Stakeholder Notice
  - Signage
  - Division of Scope on Adjacent Projects

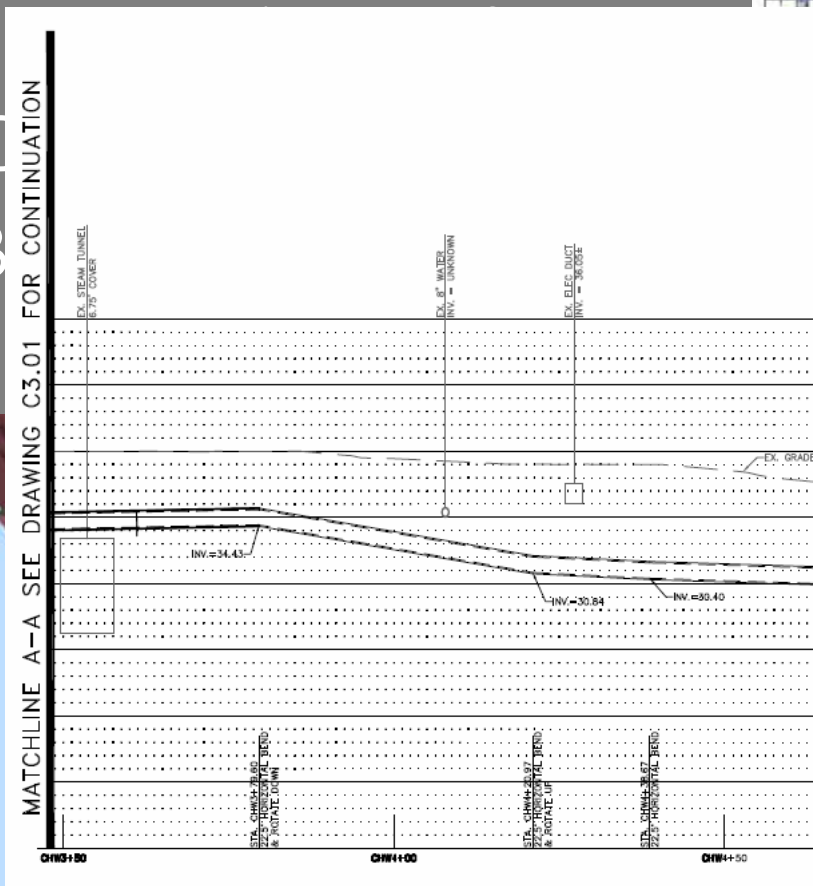




# Design Management

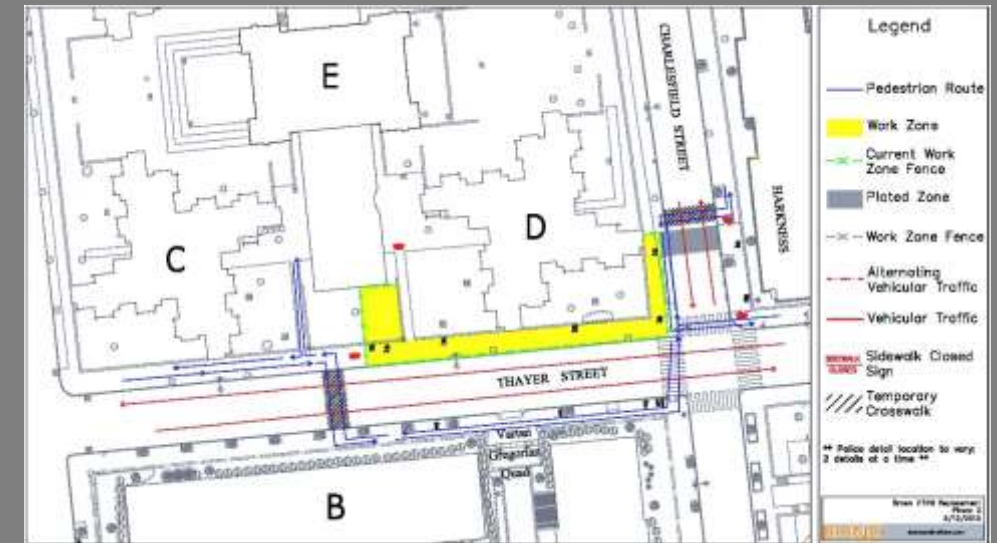
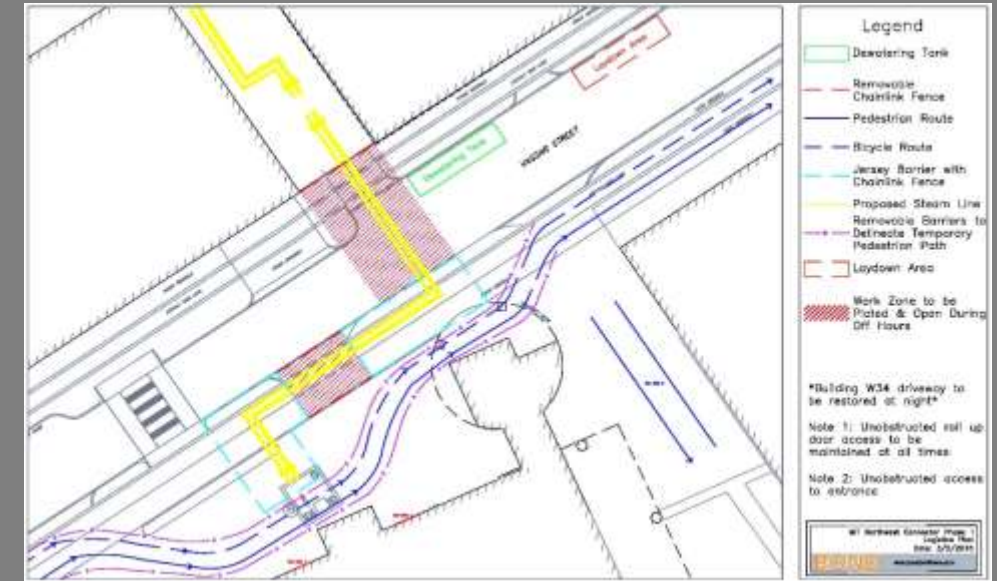
- 3D Modeling Tools

• S  
• C  
• B



# Planning and Precon

- Logistics Planning
  - Day to Day operational impacts
    - Public v Private Complexities
    - Planning movements
  - Needs of user groups / stakeholders
    - Building Managers
    - Daily Deliveries
    - Students / Faculty / Staff / Public
    - Classroom Impact – Noise/Access
  - Campus Environment
    - Academic Schedule
      - Events, Exams, Graduation
    - Pedestrian Traffic Flow
      - Traffic Plans
      - Way finding signage
      - Building / Facility Access/Egress
  - TREES!!!!!!!!!!!!!!





# Planning and Precon

- Systems Outages
  - Planning and minimizing impacts in relation to taking a system out of service
- Preconstruction Services
- Outage Preparation
  - ID Isolation Points
  - Lock Out / Tag Out
  - Equipment Protection
  - System Loops
  - Temporary Bypass
- System Restoration
  - Testing / Commissioning
  - Resource Allocation to ensure timely return to service (planning)

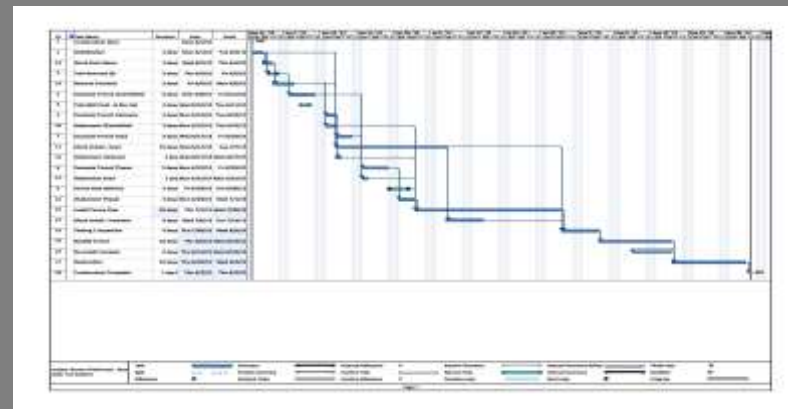


# Planning and Precon

## BOND

AREA / JOB HAZARD ANALYSIS		
JOB DESCRIPTION: Demolition, rebuild of Manhole Wall		
LOCATION: MIT HAVO Job	DATE:	
DESIGNATED COMPETENT PERSON: Heider Paschke		
SUPERVISOR: Rich McCann		
BOND SAFETY REP: Benjamin Tito		
PAST INCIDENT REVIEW: Yes MDS REVIEW: Yes REQUIRED INSPECTIONS AND PERMITS: EQUIPMENT: Taped, gas detector, harness, lights. • □ Pre and Post Task Analysis • □ Daily Safety Inspection • Confined space permit *Reference Bond Safety Work Procedure No 1 supplement to this JHA		
HAZARD CONTROLS		
JOB TASKS	POTENTIAL HAZARDS	CONTROLS
Opening Manhole cover	Pinch point, struck by	Due diligence, solo operation, proper tool choice
Entering Manhole	Unhealthy atmosphere	Gas monitor testing
Entering Manhole	Fall/retrieval	Tipoff with retriever and harness and designated attendant
Entering Manhole	Live Electricity	RI suit with face shield and needed PPE, live lines moved and covered by Mass Bay ahead of time
Placing Plywood for shielding	Flying Debris/nails, wood fragments	Safety glasses
Break through concrete wall of vault	Chips of concrete	Safety glasses and gloves
Cutting out rebar	Sparks and flying metal CO from gas engine Noise from cutter	Safety glasses with face shield and gloves Monitor environment, ventilate as needed Hearing protection
Disposal of demolition debris	Lifting, hoisting, buckets	Use proper lifting techniques, assistance from outside with rope on bucket

- Safety & Quality Focus
  - JHA / PTA
  - Sub Orientations
  - Tool Box Talks
- Schedule Development
  - Coordination
  - Incorporate Owner Requirements
  - Impact of Adjacent Projects
  - Schedule the ACTUAL Work



## BOND

MIT NANO Enabling Project

From: 10/29/2014 To: 11/8/2014

		Present Work Week					Week 1					Week 2				
		Monday	Tuesday	Wednesday	Thursday	Friday	Monday	Tuesday	Wednesday	Thursday	Friday	Monday	Tuesday	Wednesday	Thursday	Friday
Concentration	Description of Work	11/1	11/2	11/3	11/4	11/5	11/6	11/7	11/8	11/9	11/10	11/11	11/12	11/13	11/14	11/15
ZONE A																
Piles	Pile Installation	X5	X5	X5	X5	X5										
Piles/Awayway	SOE/Pile installation West Awayway			X5	X5	X5										
CHW	Excavation of CHW trench from bldg. 26	X4	X4							X4	X4			X4	X4	X4
Awayways	Excavate West Awayway						X4	X4	X4	X4	X4					
Awayways	Demo Wall Awayway													X4	X4	X4
Fire Protection	Breakout DB & repair ruptured 6" PP line			X5	X5	X5										
CHW	Excavate to locate existing CHW lines for new DB			X1	X1											
ZONE B																
Fire Protection	Install 30" Fire protection (On Hold - Design)															
Sewer	Install 8" Sanitary Sewer (On Hold - Design)															
ZONE C																
Test Pits	Set Sleeves for Piles (Pending OOC approval)						X5	X5	X5	X5	X5					
	Install SOE piles (Pending OOC approval)											X5	X5	X5	X5	X5
Zone D																
ZONE E																
CHW	Excavate for 30" CHW lines						?	?	?	?	?	?	?	?	?	?
ZONE F																
Fire Protection	Install 30" PP line															
Fire Protection	Excavate & Place Concrete Electrical DB	X1	X1											X1	X1	X1
Electrical	Test Pit M29				X1	X1				X1	X1					
Electrical	M29 Expansion Excavation															
Chilled Water	Excavate for 36" CHW S&R	X2	X2	X2	X2	X2				X2	X2	X2	X2	X2	X2	X2
Misc. Work (Not Zone Specific)																
Trailer Complex	Install Housekeeping Pads (Electrical)			X3	X3	X3				X3	X3					
Trailer Complex	Install Electrical DB for Trailer complex	X3	X3	X3	X3	X3				X3	X3					
Fire Protection	Presidents Courtyard															
Test Pit	Building grade beam test pit									X3?	X3?					



# Installation & Restoration

- Site preparation
  - Fencing, Barricades
  - Tree Protection
  - Street/Walkway Closures, Police Details, Signage
  - Dig Safe / Private Utility Locations
- Earthwork
  - SOE
  - Excavation
  - Existing Utility Support / Protection
  - Trucking / stockpiling / containment
  - Soil contamination issues
  - T&D Soils
    - Pre-characterization
    - ID disposal facilities
    - Facility/Owner Approvals
    - Wastestream tracking & management



# Execution – Installation & Restoration



- Utility Installations
  - Utility Shutdowns and Isolation
  - Relocations & Bypass
  - Material Delivery
  - New Installation / Assembly
  - As-built / Records
  - Testing, Commissioning





# Execution – Installation & Restoration



- Backfilling,
  - Material Selection
  - Delivery
  - Flowable Fill Options
  - Import v Reuse
  - Compaction
  - Site Access
- Site Restoration
  - Existing Conditions
  - Area Features & Styles



# Execution – Installation & Restoration



- Horizontal Approach
  - Multiple sites
  - Linear Progression
    - Prep Site
    - Installation
    - Restore Site
  - Coordinating Multiple Impact Areas
  - Formula for Success = Planning, Planning, Planning





Team

Design

Execution

Q&A



QUESTIONS &  
ANSWERS